

50 YEARS OF
EXCELLENCE



ALEXCO

ALUMINUM EXPERTS COMPANY

Your Gateway to Aluminum Excellence...



About Alexco

With over 50 years of experience, Alexco has established itself as a premier provider of aluminum and glass solutions. We specialize in the design, fabrication, and installation of innovative enclosures for a wide range of structures, including towers, skyscrapers, luxurious villas, and prestigious hotels. Our commitment to exceptional quality, efficiency, and customer satisfaction has earned us a reputation for excellence in the industry. Backed by a skilled and dedicated team, we deliver tailored solutions that meet the unique needs of each project, ensuring a seamless and successful experience for our clients.

نبذة عن أليكسو

إنّ خبرة أليكسو الممتدة على مدى ٥٠ عامًا توطد مكانة الشركة كإحدى الشركات الرائدة في مجال صناعة الألمنيوم والرّجاج. من خلال تخصصها في تلبيس المنشآت المصنوعة من الألمنيوم كالأبراج والفلل والفنادق، هي المعروفة بفعالية عملها ودقة مواعيدها. تلتزم أليكسو بأعلى معايير الجودة، والنزاهة، والثقة في كل مشروع. تفتخر شركة أليكسو بالتزامها ليس فقط بسلامة موظفيها، بل أيضًا بتطورهم المهني، مما يجعل البيئة الحاضنة في أليكسو مثالية لإعداد قوى عاملة ذات مهارات تقنية عالية. تحرص شركة أليكسو على رضا الزبائن، لذلك تركز على فهم احتياجات الزبون وتلبيتها من خلال حلول مخصصة، مما يضمن أفضل النتائج لكل مشروع.



ALEXCO - KSA

ISO Certification

Alexco prides itself on its dedication to quality, effective management, and remarkable achievements.

ISO Certifications:

- Certificate ISO 9001:2015 No. 89949
- Certificate ISO 14001:2015 No. 89950
- Certificate ISO 45001:2018 No. 89948

CE Marking Authorization:

- Authorized by Aluminco SA for CE marking according to EN15088 standards.
- Validates capability to manufacture products according to European norms.


Commitment to Excellence:

- Continuous improvements in management, production, and workflow.
- Steadfast commitment to setting new standards of quality and innovation.

Experience excellence in every product, process, and interaction!



Projects



TOWERS

BUILDINGS

VILLAS

COMPLEXES

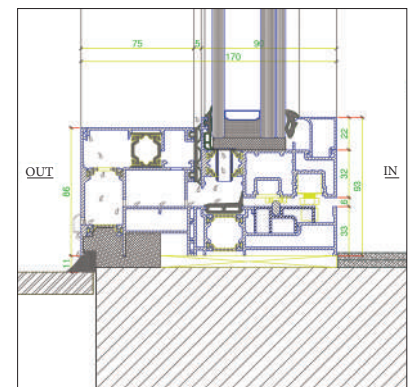
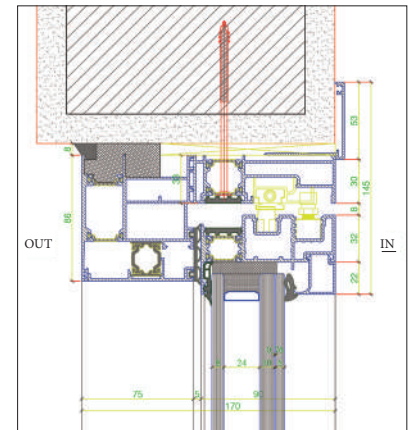
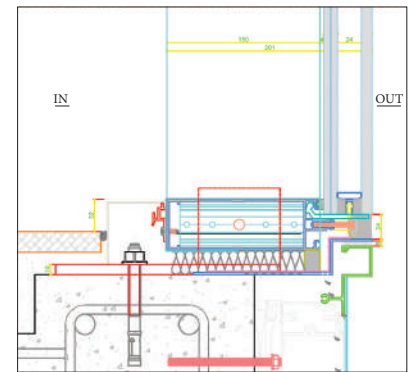
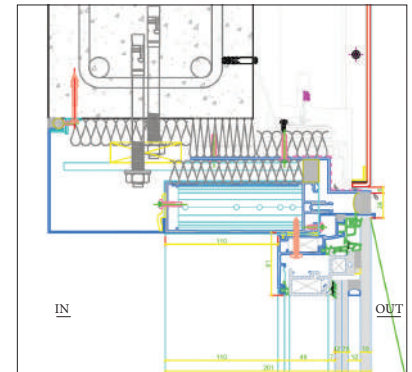
HOSPITALS

UNIVERSITIES

BANKS

Four Seasons Hotel

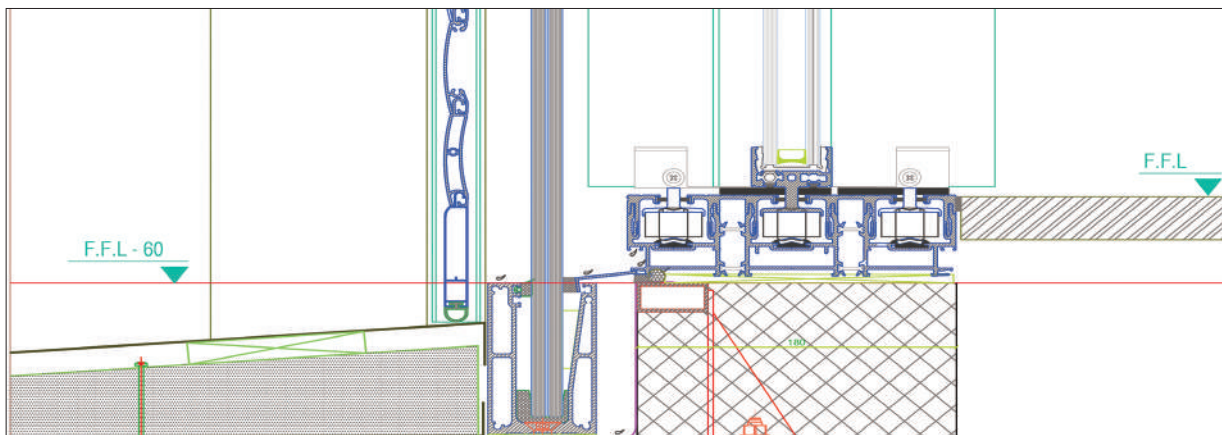
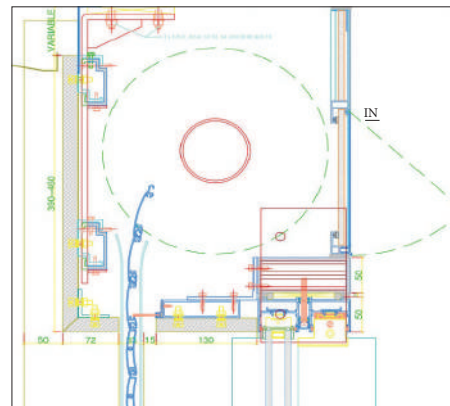
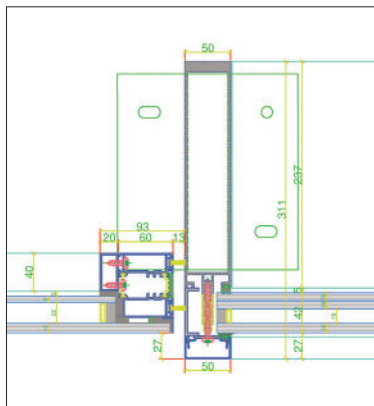
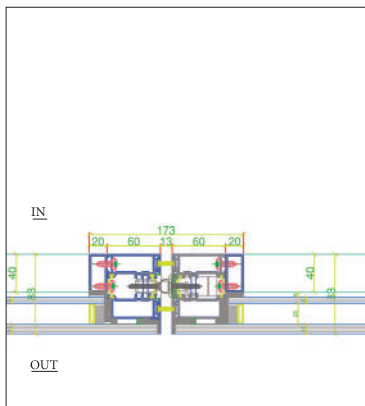
Consultant: CVTEC



Alexco exceeds conventional industry benchmarks with Four Seasons, achieving exceptional thermal and sound insulation through high-performance aluminum and glass alongside the SL2900 Eco-Slide system. This results in unmatched decibel levels, notably standing out in global competition among five companies, solidifying our position as a leader in high-performance sound technology. Four Seasons is a testament to our commitment and sets a new benchmark for the industry.

Fawaz Building

Architect: Youssef Haidar



Beirut Harbour

Architect: Fouad Menem



The Wave

Architects: SOMA



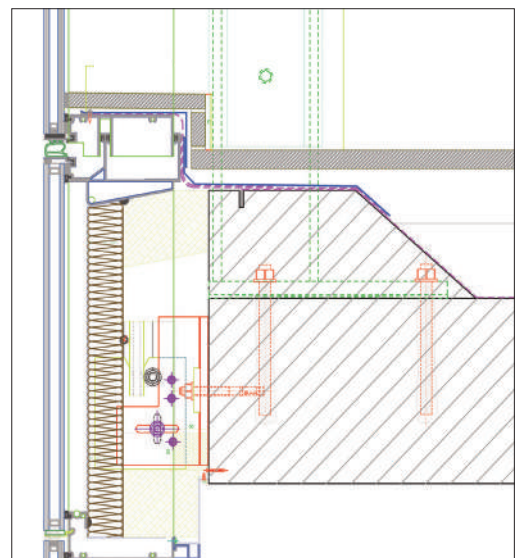
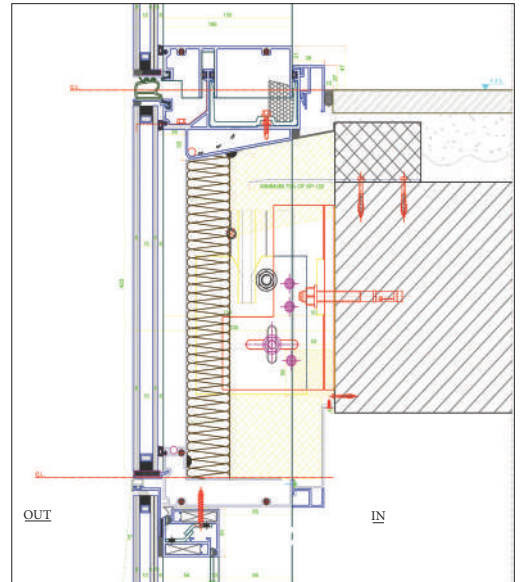
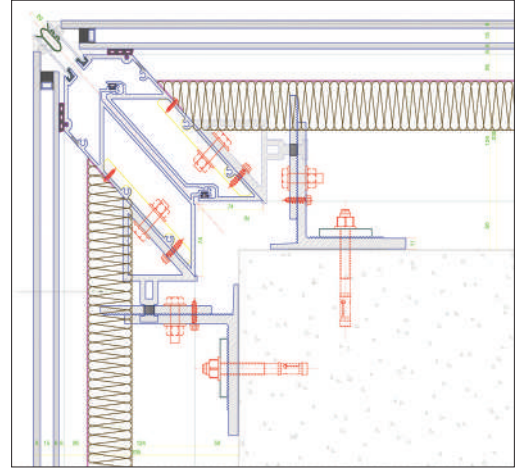
Mondrian Tower

Consultant: Fouad Samara Architects



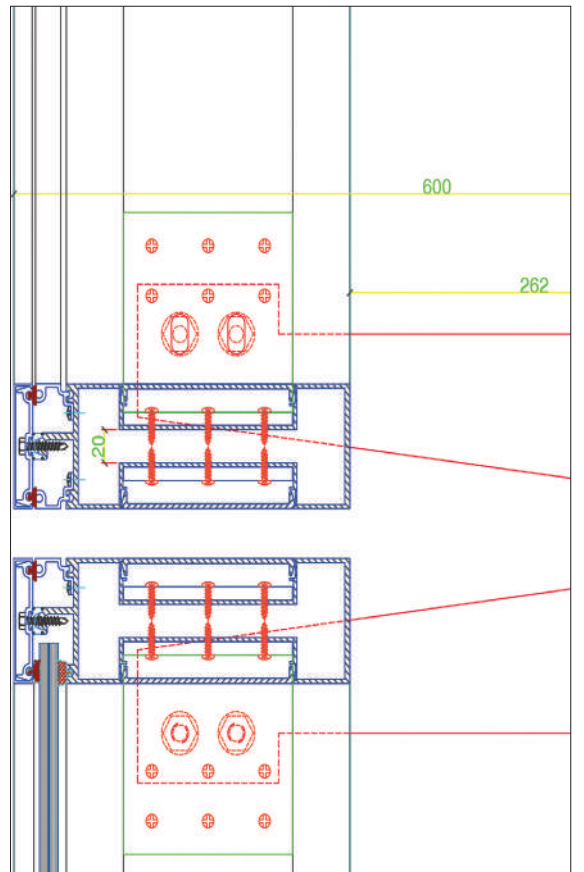
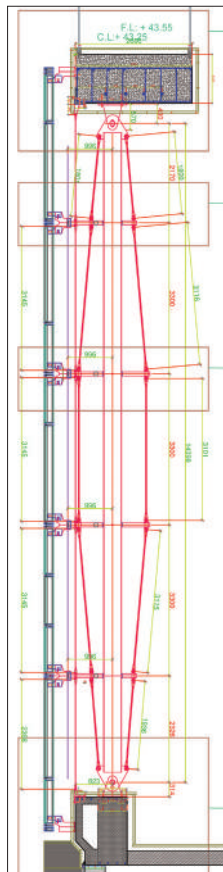
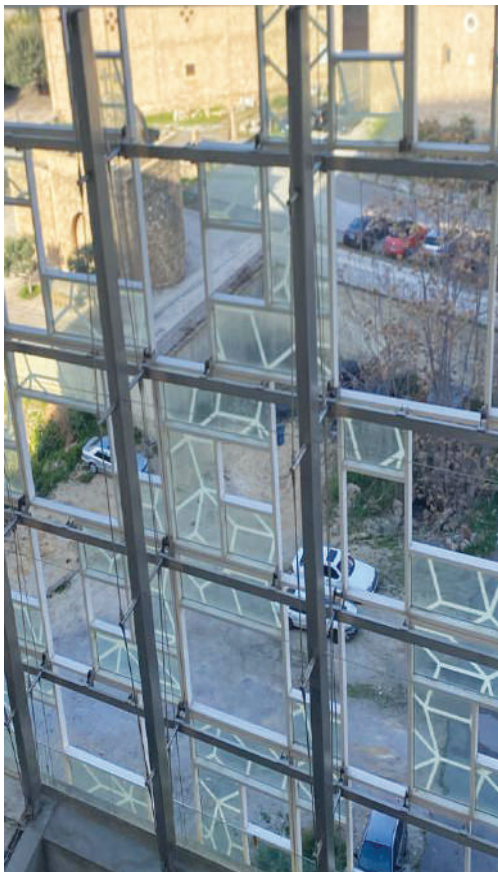
Marina Gate Tower

Consultant: Erga Group



Beirut Gardens

- Consultant: Erga Group
- Architect: Arata Isozaki



Factory Loft

Architect: Bernard Khoury



Antelias

Architect: Richard Abi Rached



Strassco Tower

Architect: Sarkis Azadian



Centre Sofil

Architect: Pierre Nehmeh



Optimal Medics

Consultant: Hassib Ibrahim



Zardman - Al Moudir Building

Architect: Georges Bechara



City Gate

Consultant: Trust Consult



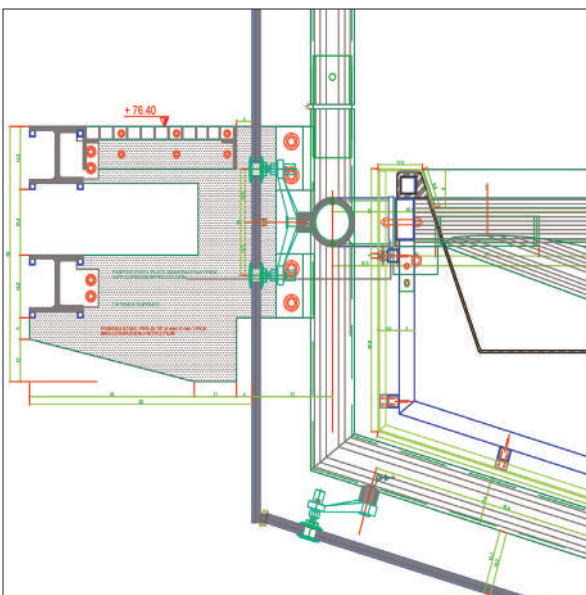
Dbayeh 546

Consultant - Architects: Badih and Kantar



Lebanese University-Tripoli

Consultant: Laceco Architects and Engineers

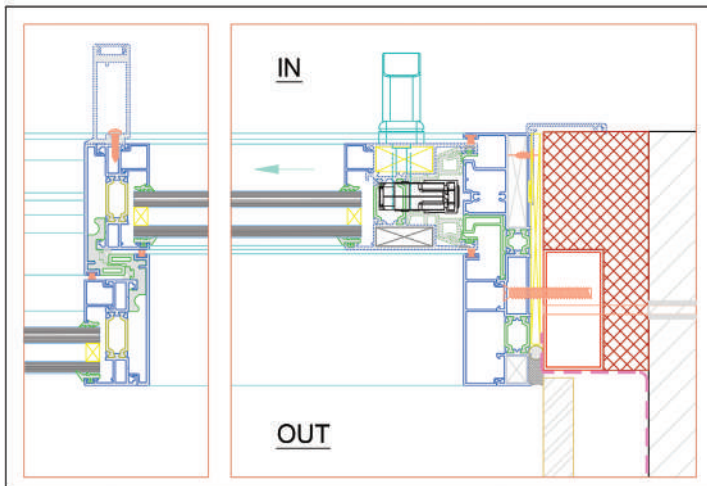
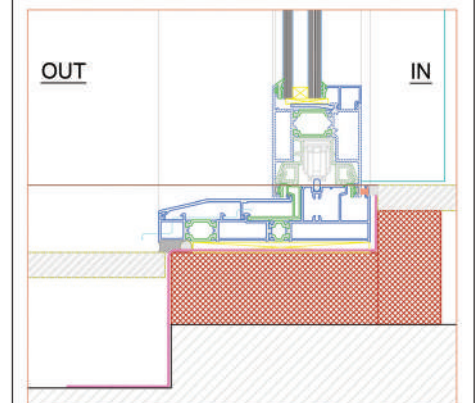
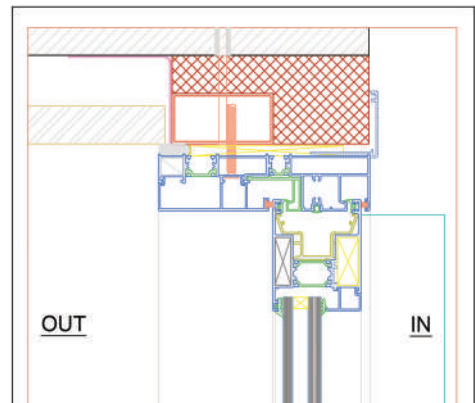
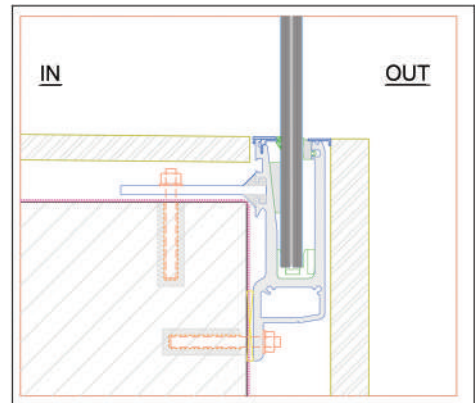


Bliss Tower

Architect: Mohamad M. Arayssi

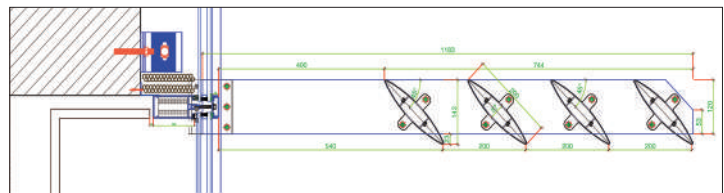
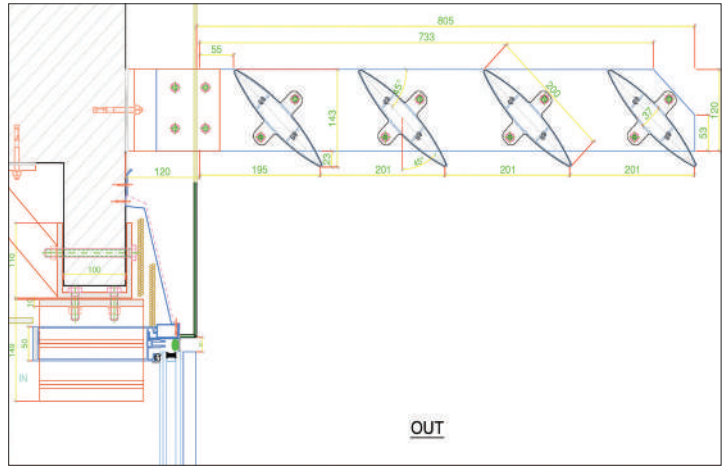


Bliss Tower stands as one of Alexco's most remarkable achievements. This large-scale project was completed in an exceptional timeframe of just two months, establishing a new benchmark for speed and efficiency in the industry.



Beam Building

Consultant: Rachid Karam



Badaro Building

Architect: Roger Dib



Sioufi 44

Architect: Fouad Menem



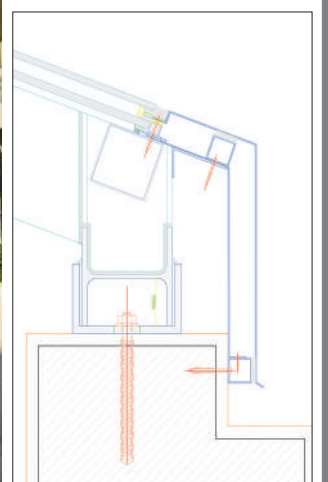
Movenpick Hotel - Beirut

Consultant: Erga Group



LAU Medical Center - Rizk Hospital

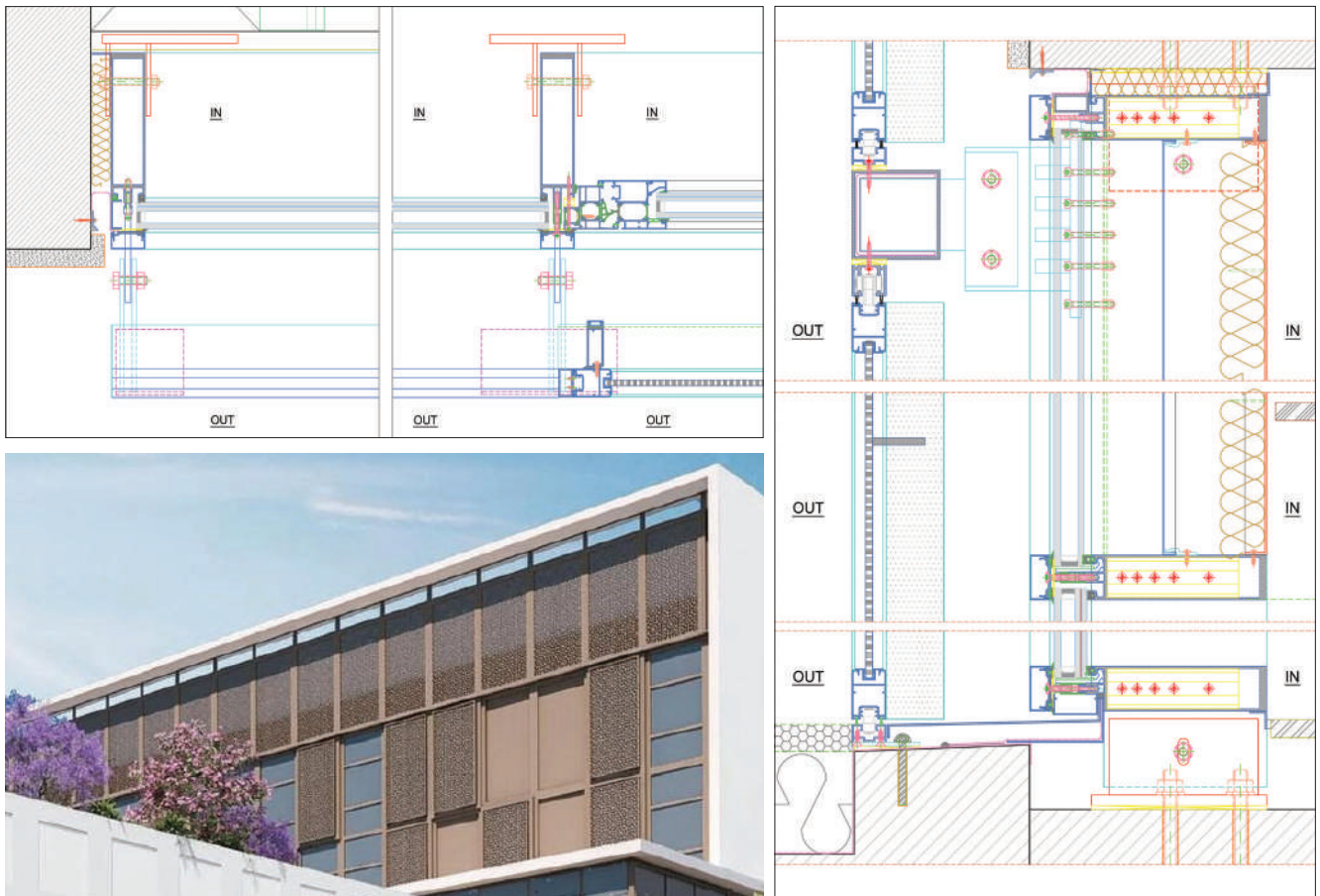
Consultant: ACE



Karantina Hospital

Consultant: Dar Al-Handasah

Contractors: MAN Enterprise



Aley Commercial Center

Consultant: Spirit Design Group



Cezar Building

Architect: Khalil Akila



Arcade Congo

Consultant: Continuum Rossignol Associes



Arab Chamber of Commerce

Consultant: Pierre El Khoury Architects



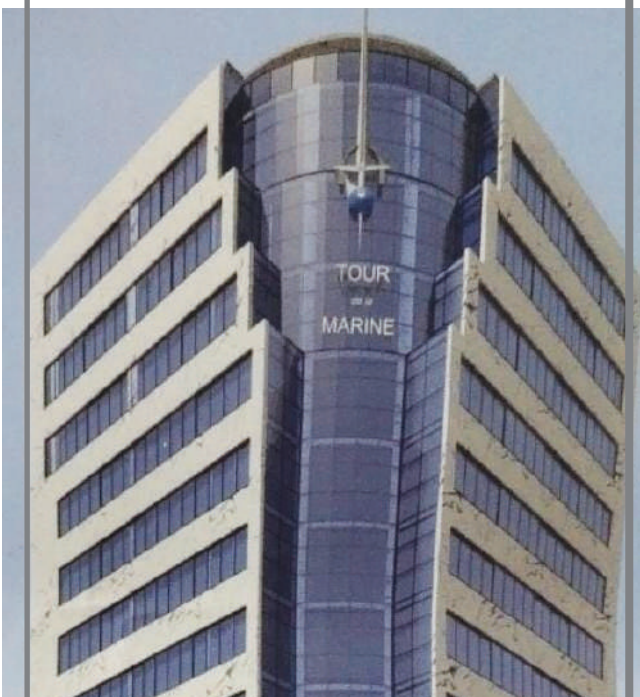
Etoile Realty Building

Consultant: Erga Group



Tour de la Marine - Conakry

Architect: Fadia Diallo



Msaytbeh 4561

Architect: Khodor Hussein



Kempinski Residential Tower - Accra

Contractors: Zakhem Construction LTD.

Architects: Imad & Hussein Fakhry



108 Building

Consultant: Erga Group



Arapco - Sudan

Consultant: Architect Abdallah Sabbar



Louaizeh Project

Architect: Edward Eid



Spinneys - Jal El Dib

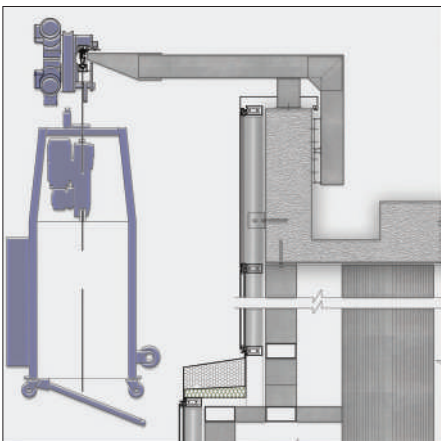
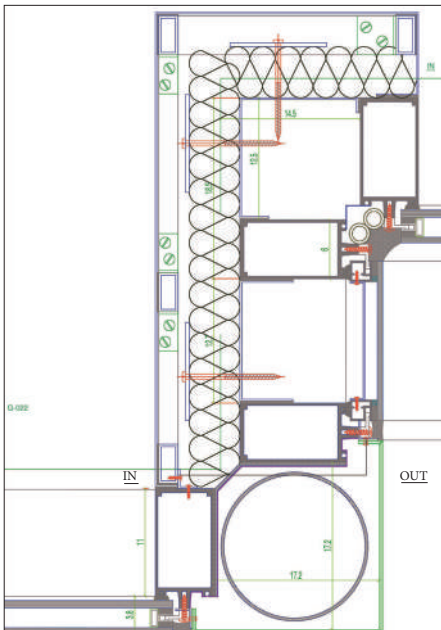
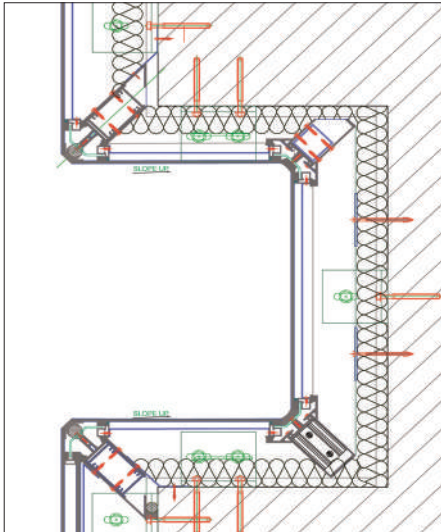
Contractors: Rafa Engineering

Architect: Maria Oueida



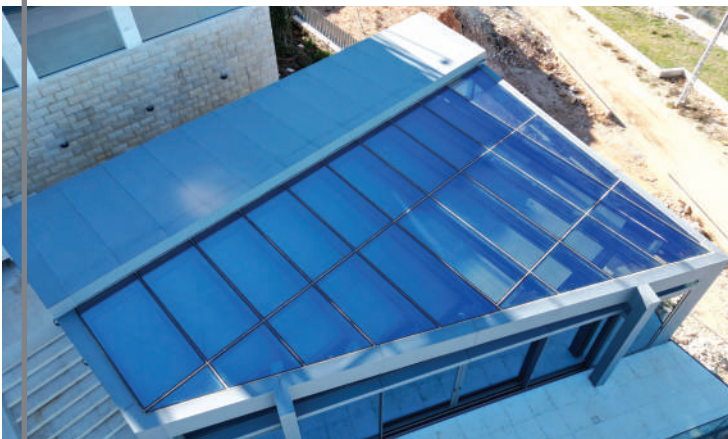
Byblos Bank Africa (BBA) in Sudan

Consultant: A - Consult



Sawaki Villa

Interior Architect: Sandra Ghantous



Simon El-Chami Villa



Orchard Project

Architect: Karim Nader



South Arc Villa

Architect: Noaman Hachem



Bterrani Villa

Architect: Rabih Moubarak



Nestled in the heights of Faqra, Alexco proudly delivered the complete fabrication, supply, and installation of high-performance aluminum and glass systems, executed with Lift & Slide minimal aluminum systems and featuring a 6-meter-high jumbo glass panel.

Nassif Ragheb Villa

Consultant: Erga Group



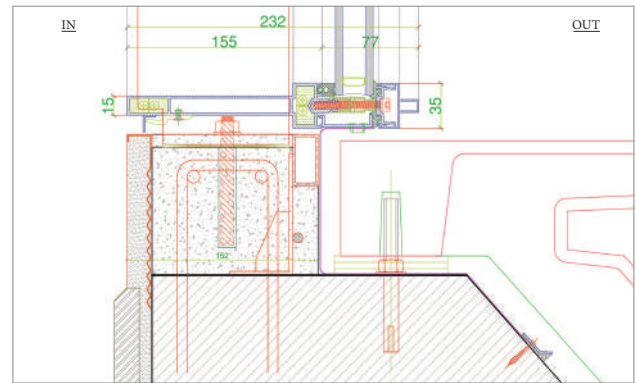
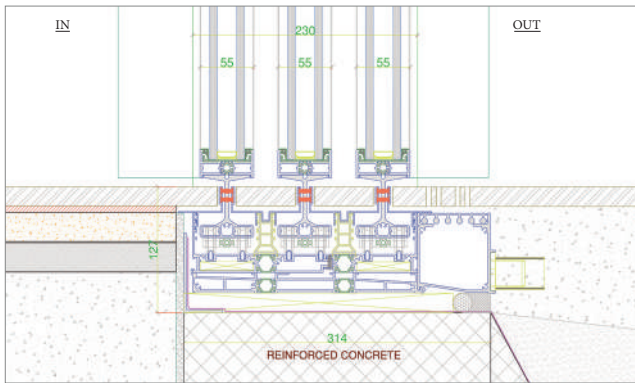
Dr. Raed Lattouf Villa

Architect: Akl Akl



Joseph Younes Villa - Beitmisk

Architect: Hassan Dergham



Farid Khalil Villa

Architect: Bernard Khoury



Rahi Villa

Architect: Rony Fatté



Elie Khoury Villa

Architect: Sarkis Azadian



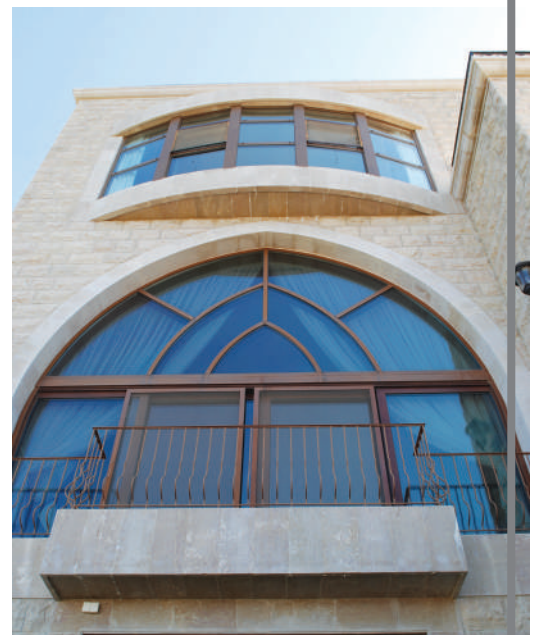
Hassan Ghandour Villa

Architect: Sarkis Azadian



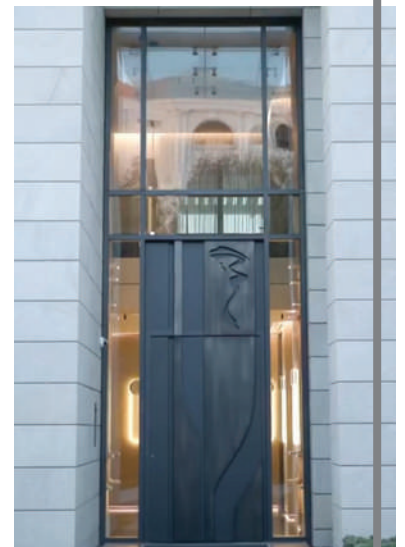
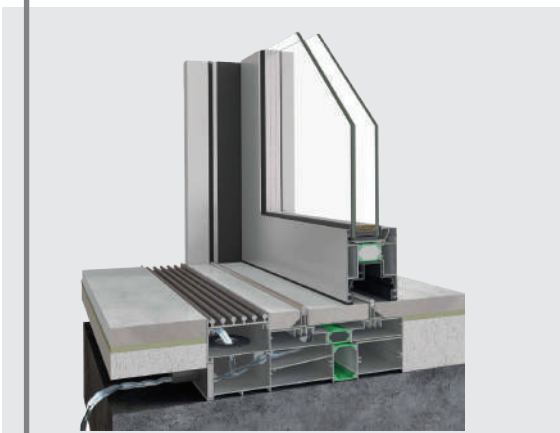
Wahib Gaith Villa

Architect: Salman Kiwan

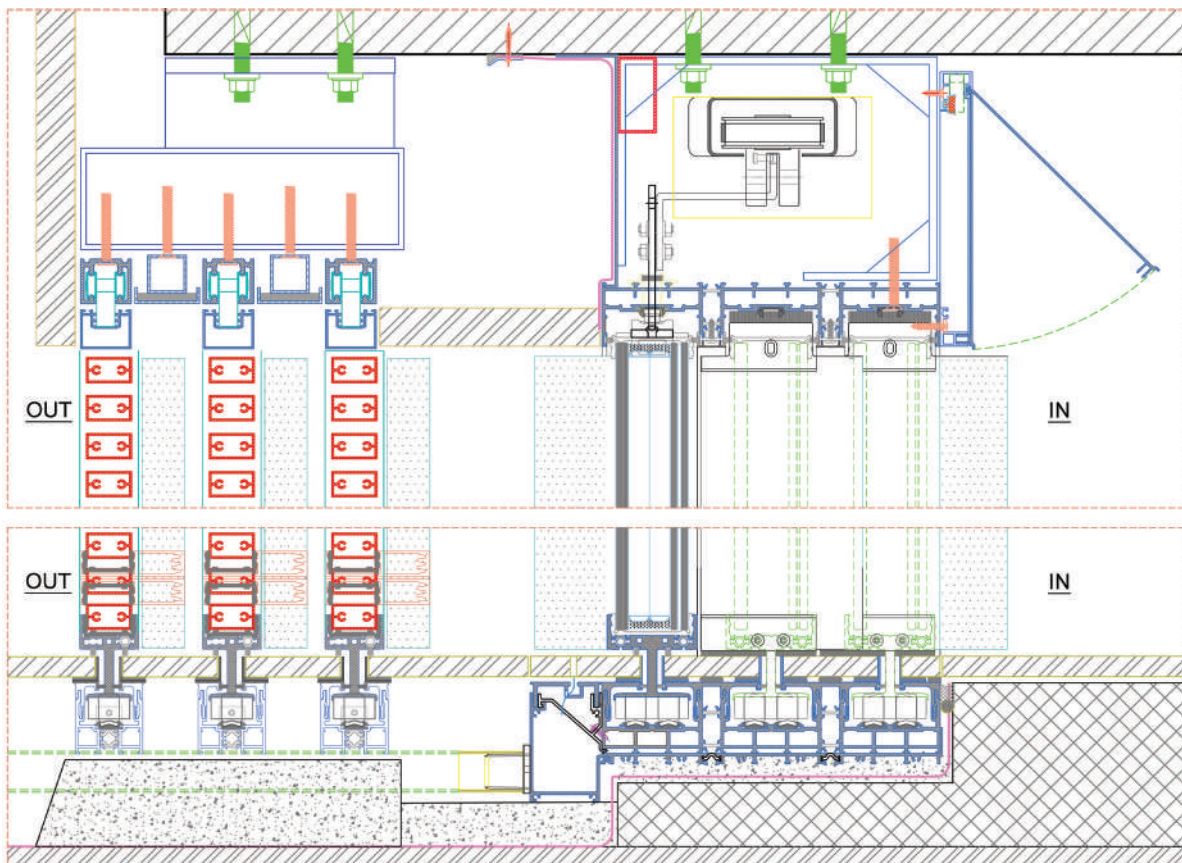


Ali Dakik Villa

Consultant: Trust Consult



Patrick Tohme Villa
 Architect: Serge Abi Saleh



Palais Présidentiel / Minière - Conakry

Architect: Claude Missir



Naccache Villa

Architect: Chady Bteich



Mohammad Chehab Villa

Engineer: Zouheir Kaedbey



Gaby Kaii Villa

Architect: Georges Kfoury

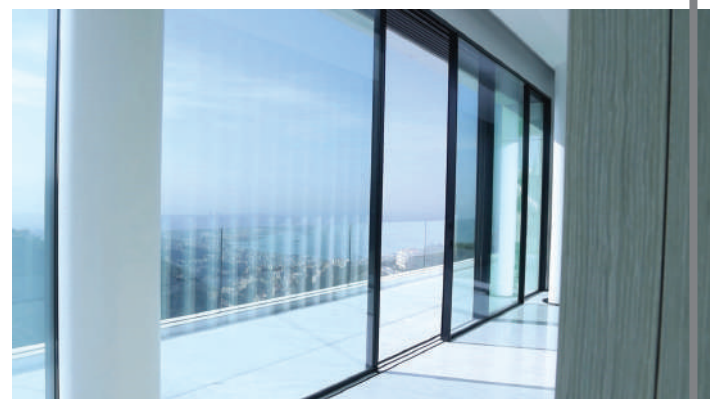
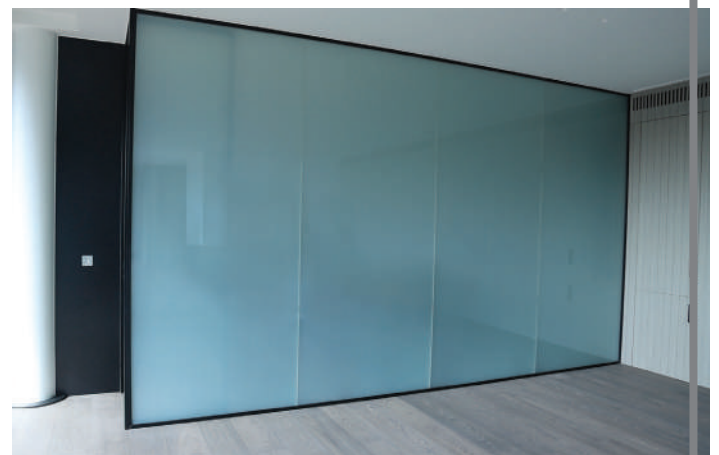


Lina Al Awar Villa - Washington



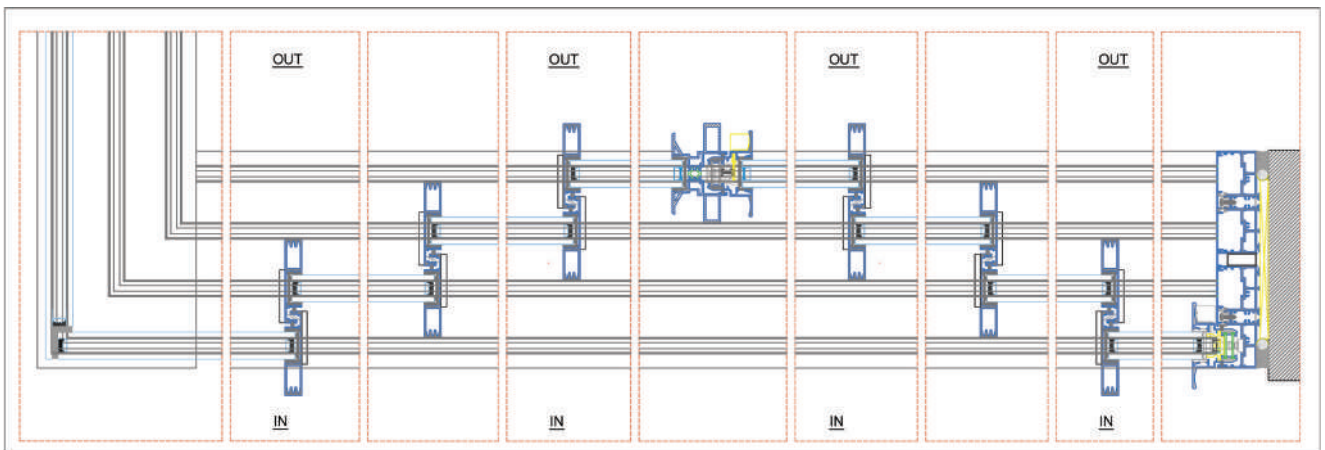
Marwan Moukarzel Villa

Architect: Jean-Claude Najem



Elie Samaha Villa

Architect: Michel Abou Abdallah



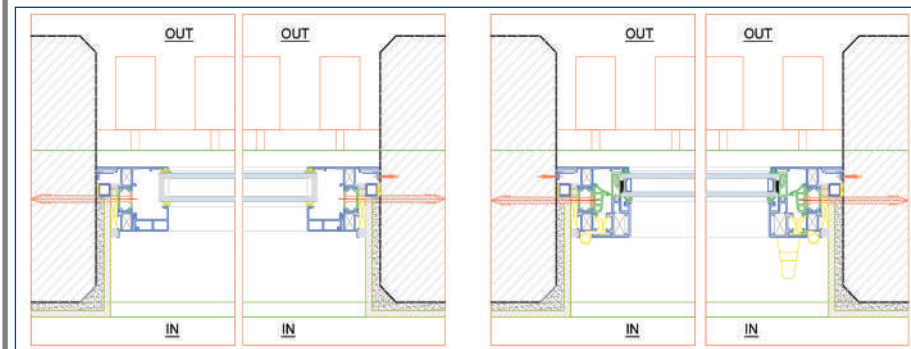
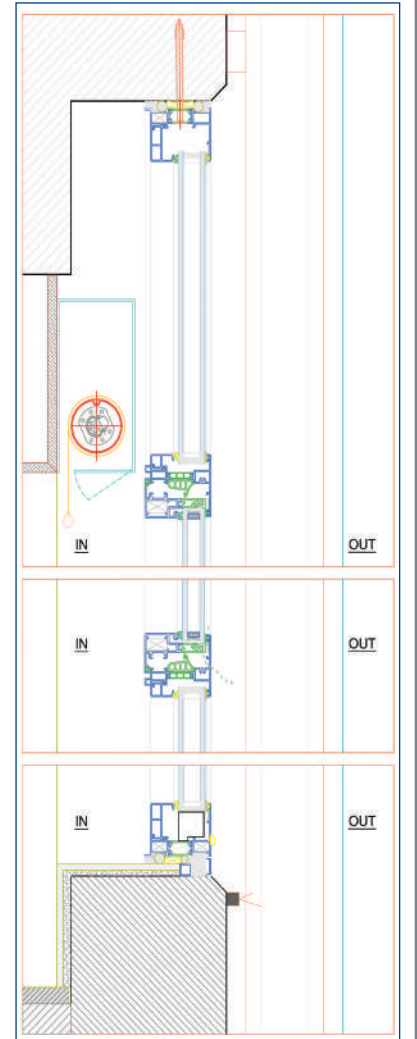
Jamal Sayegh Villa

Consultant: Trust Consult



Elie Hakim Villa

Architect: Marie-Rose Hobeika



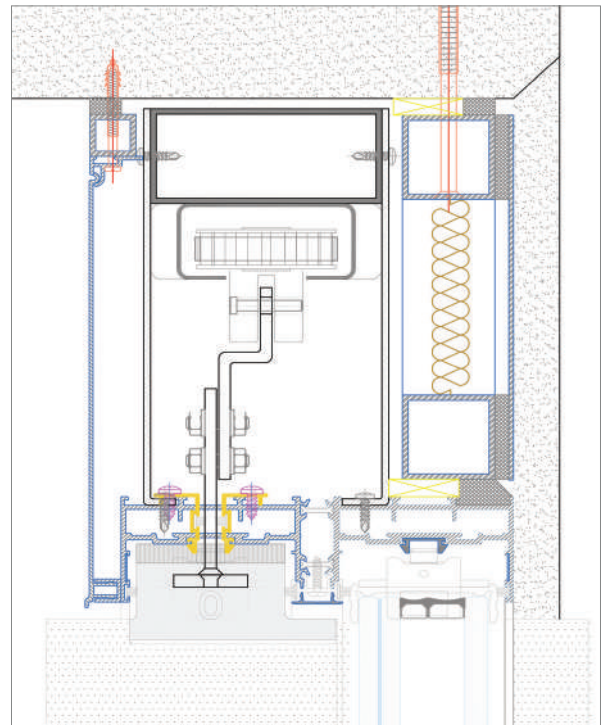
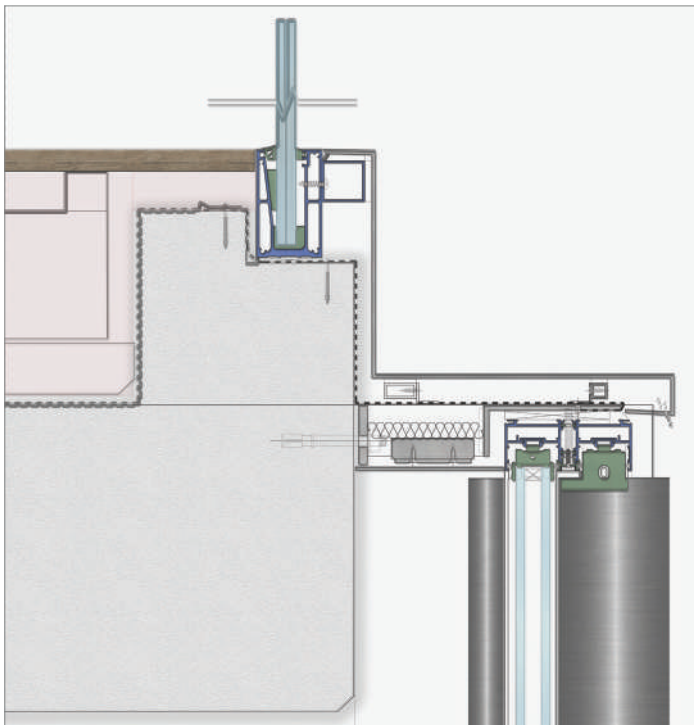
EAN Villa

Architect: Samira Abou Nader



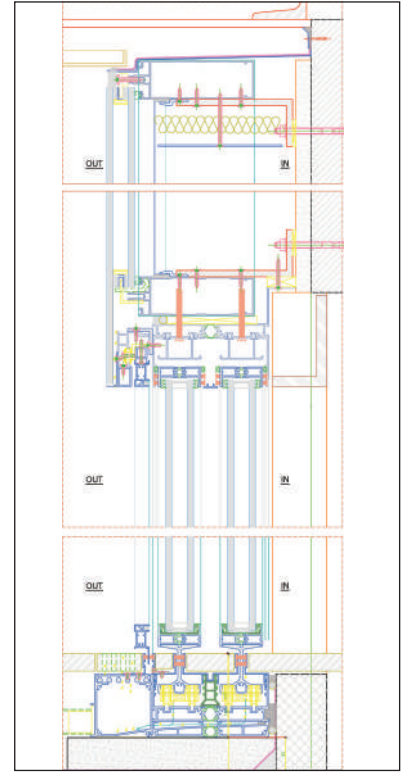
Faqra Villa

Architect: Youssef Mallat



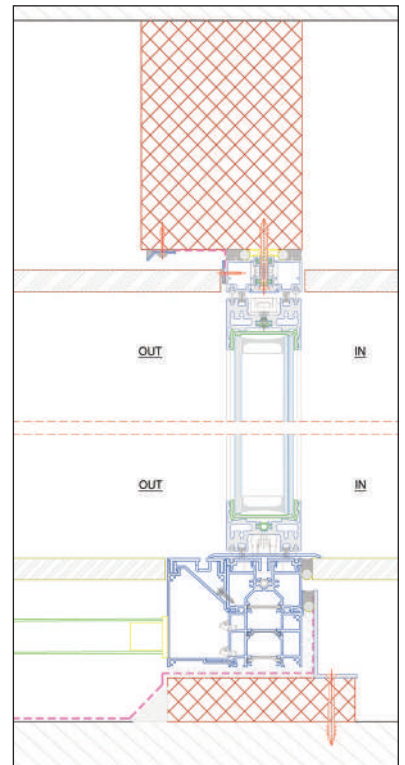
Qornet Chehwan Villa

Architect: Rainier Freiji



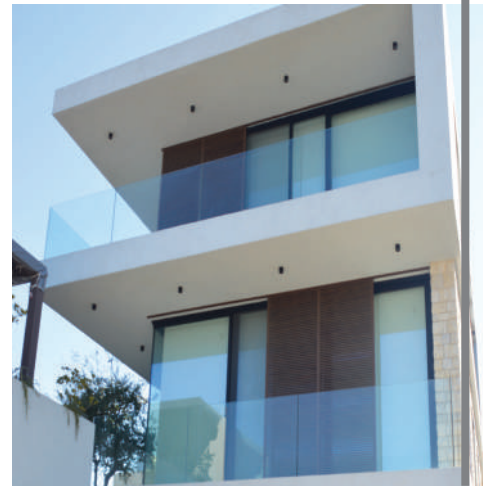
Khalaf Villa

Architect: Georges Kfoury



Mona Chehab Villa

Architect: Walid Youssef



Jihad Al-Arab Villa

Architects: Mario Ghalieh & Michel Lamaa



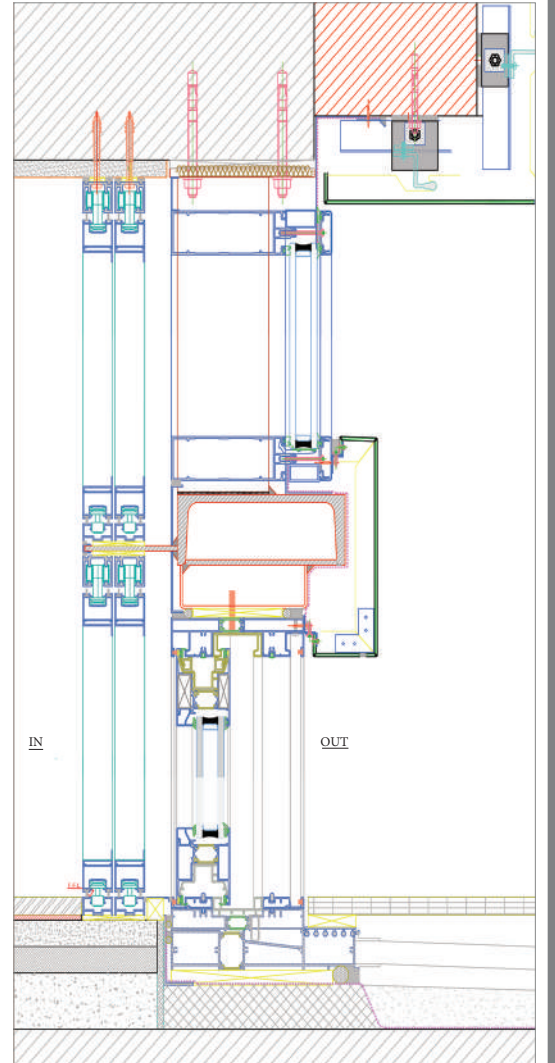
Ashkar Residence

Architect: Robert Hussein



Kfardebian Villa

Architect: Marie-Rose Hobeika



Jbeil Project

Architect: Roy Boustani



Youssef Ghaith Villa

Architect: Makram El Kadi



Safra Villa

Architect: Rita Alam



Alain Hajar Villa

Architect: Richard Abi Rached



Presidential Palace - Pergola Extension, Pointe-Noire

Architects: Badih & Kantar



Ghassan Chidiac Villa

Architect: Kamal Aghostine



Halat Villa

Engineer: Ali Tormos



Products

ALUMINCO
ALUMINIUM BUILDING SYSTEMS



Alucoil
Grupo Alberico

BIOROL S.A.

DG
Decorative Glass

Aluminco Global Presence

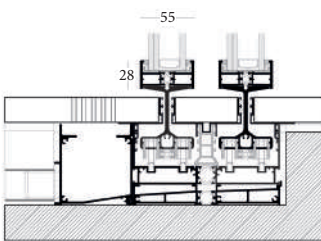
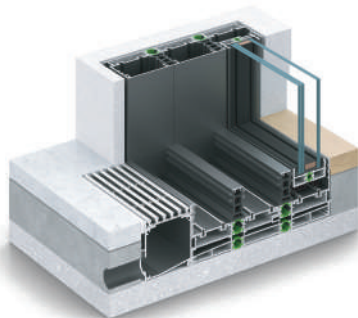
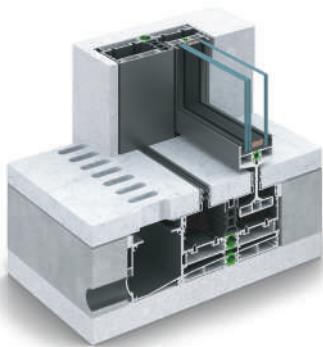




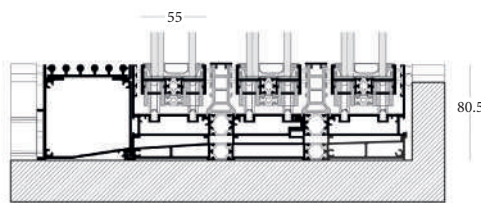
SL55 SKYLINE INFINITY

NEW GENERATION OF ALUMINCO SLIM PROFILE SYSTEM

The SL55 Infinity is a top-notch SKYLINE proposal for structures in absolute minimal design. All design elements strive to convey the message of simplicity, allowing for light, form, material, space, and nature to provide the very best of living conditions.



HIDDEN TRACK

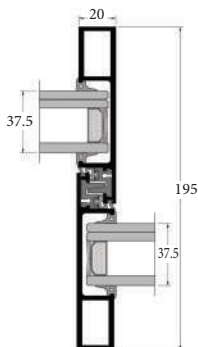
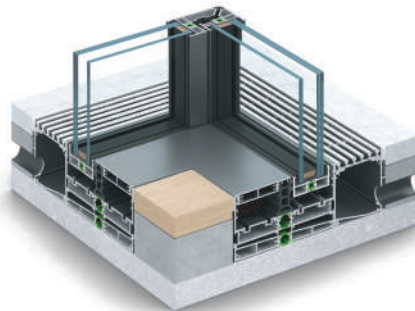
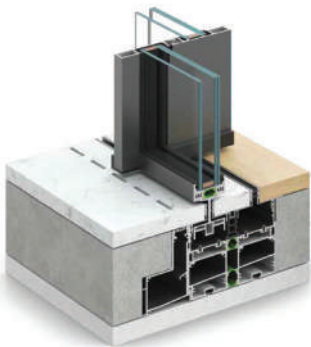
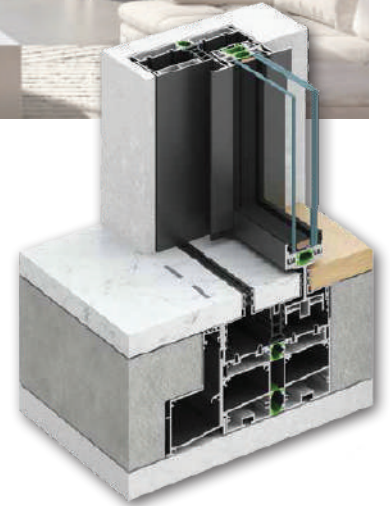


HIDDEN SASH

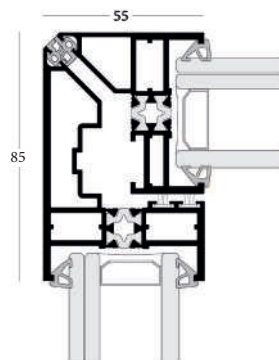


SL55 FH

THE FULL HANDLE EDITION



INTERLOCK



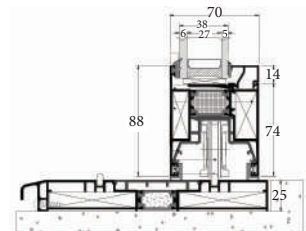
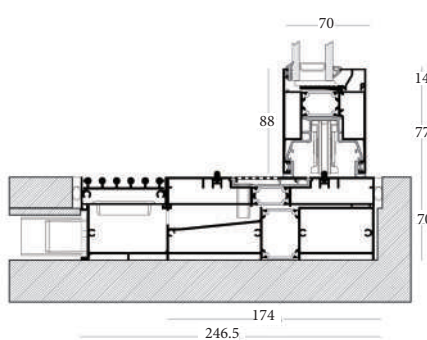
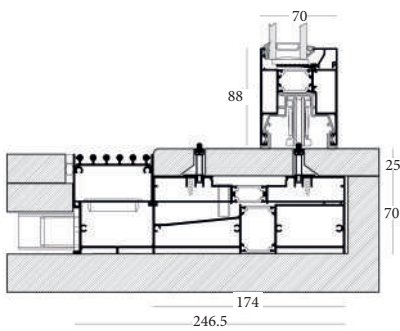
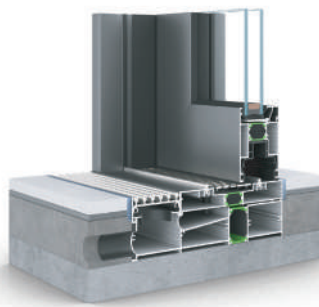
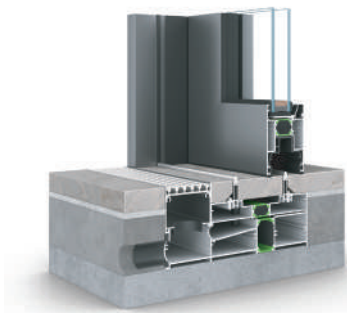
CORNER OPENING

The SL55 FH Infinity is designed to make the best of it while offering an atmospheric blend of style and top quality with optimum comfort features.



SL2700 SKYLINE THE GREAT WIDE!

LIFT & SLIDE THERMAL INSULATING SYSTEM FOR HIGH-END STRUCTURE



HIDDEN TRACK

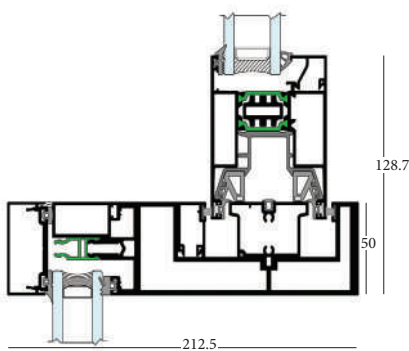
FLAT TRACK

FLAT BOTTOM TRACK

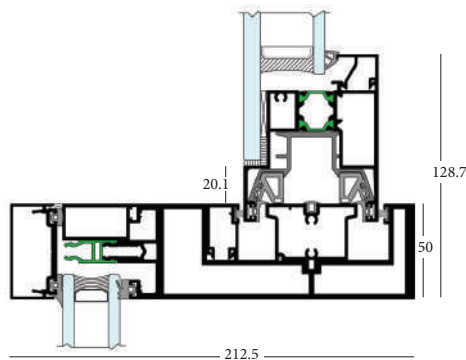


SL2750 LIFT & SLIDE SYSTEM COMBINED WITH CURTAIN WALL

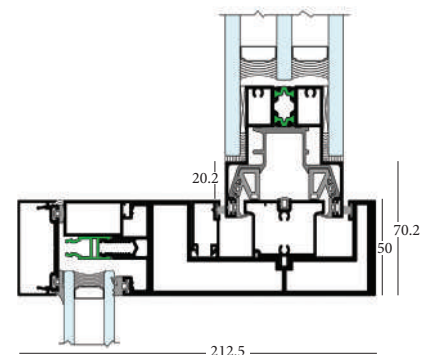
Highly insulated lift-and-slide frame system integrated with a high-end curtain wall. Only a 50 mm visible width of mullions and transoms.



STANDARD GLASS



SEMI - STRUCTURAL GLASS

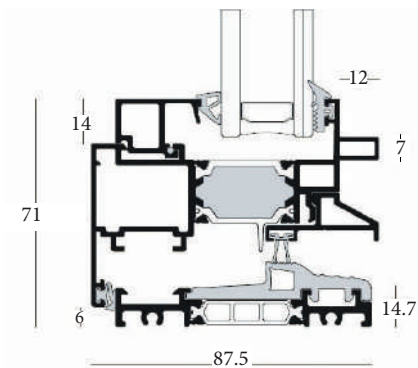
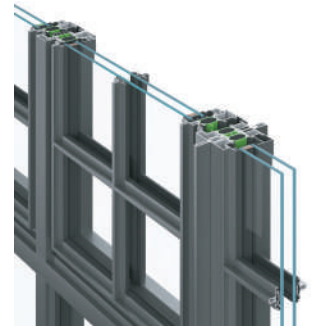


STRUCTURAL GLASS

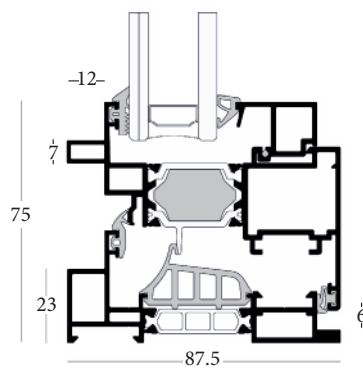


W85 ST SKYLINE RETRO STYLE

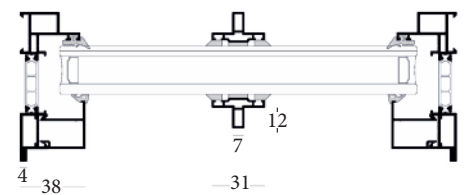
THE W85 RETRO STYLE IS A SKYLINE HIGHLY INSULATED HINGED SYSTEM



LOW THRESHOLD



LOW FRAME

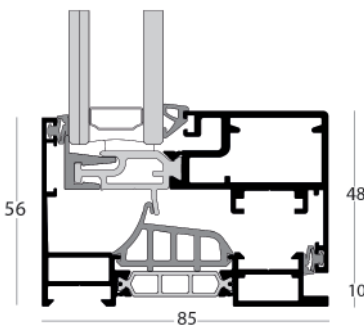
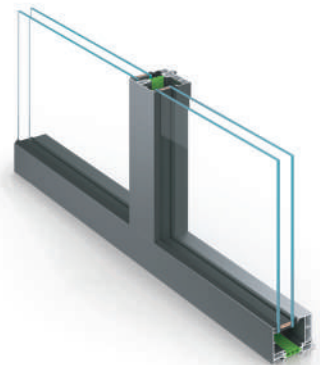


GEORGIAN BARS

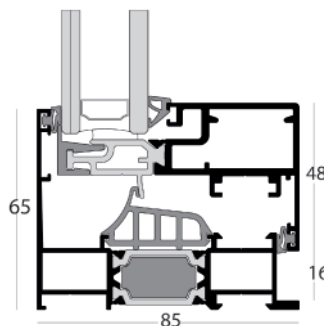


W85 HS SKYLINE VIEW MASTER

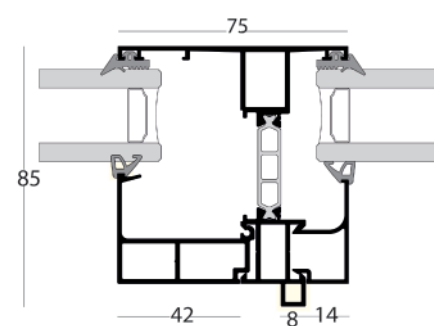
THE W85 HIDDEN SASH IS A SKYLINE HIGHLY INSULATED HINGED SYSTEM



LOW FRAME



STANDARD FRAME

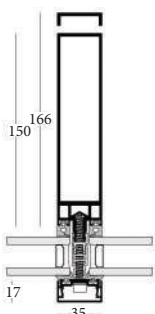
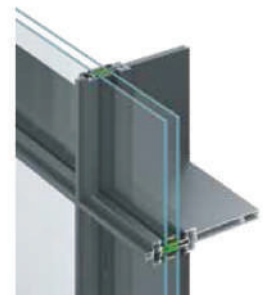
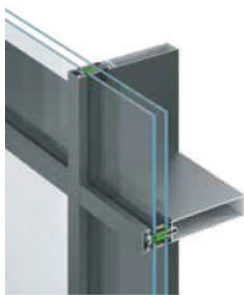


ELEGANT JOINT

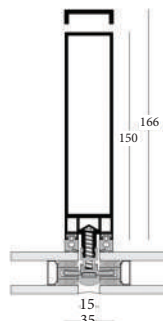


CW35

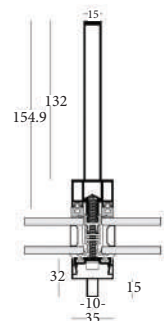
SKYLINE STYLE SETTER
MINIMAL DESIGN CURTAIN WALL SYSTEM



STANDARD



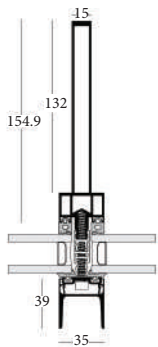
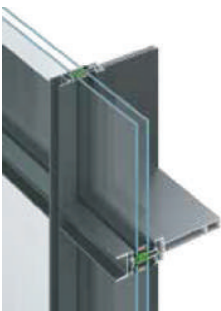
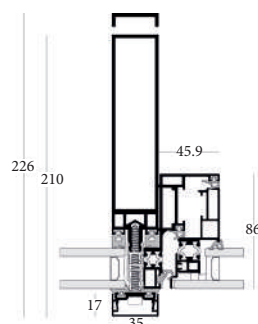
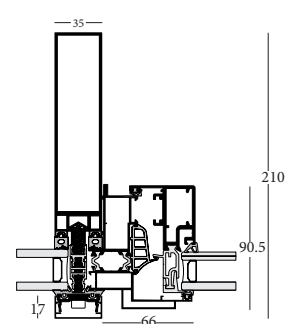
STRUCTURAL



RETRO



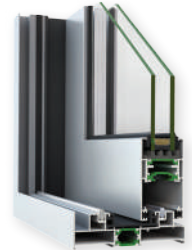
Simplicity at its best, SKYLINE CW35 is the new generation of Aluminco's curtain wall system, which offers maximum transparency due to minimal face widths of just 35 mm.


INDUSTRIAL

PROJECTED OUTWARD WINDOW

**CONCEALED SASH
TILT & TURN WINDOW**



SL2450 SLIDING SYSTEM

THERMAL INSULATION SYSTEM WITH A MINIMAL 3 CM FACE WIDTH



SL200 SLIDING SYSTEM

THERMAL INSULATION SYSTEM



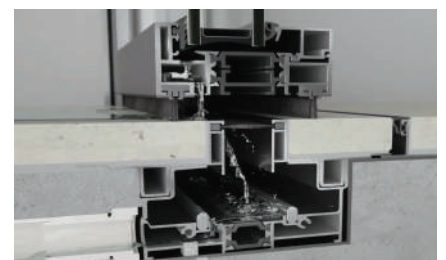


FD75 MINIMAL FOLDING SYSTEM

MINIMAL FOLDING THERMAL-INSULATING DOOR SYSTEM FOR HIGH COMFORT



METICULOUSLY AND ELEGANTLY, THE FD75 IS DESIGNED TO MAXIMIZE NATURAL DAYLIGHT, ENHANCE VIEWS, AND DELIVER EXCEPTIONAL PERFORMANCE.





W450 TILT & TURN
THERMAL INSULATION SYSTEM



W540 TILT & TURN
NON-THERMAL SYSTEM



W4750 ADVANCED TILT & TURN
THERMAL INSULATING SYSTEM FOR HIGH REQUIREMENTS





SH750 / SH700

ROLLING SHUTTERS
 FOR HIGH AESTHETICS AND PROTECTION



SH3200

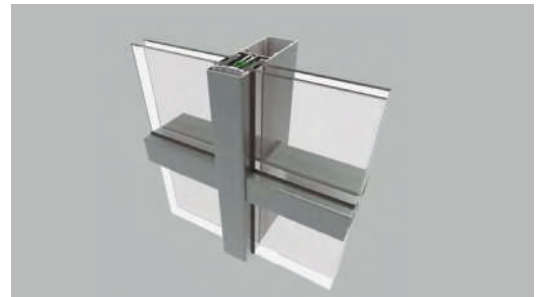
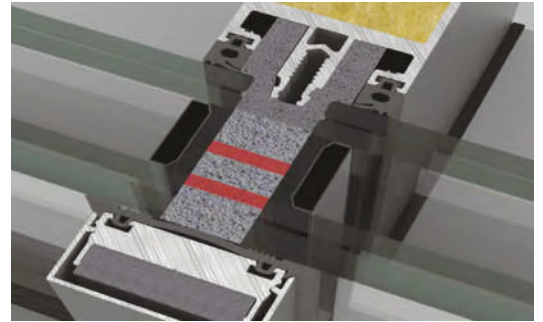
SHUTTER SYSTEM

FOR PASSIVE SOLAR SHADING SUITABLE FOR RESIDENTIAL BUILDINGS



EW50 SP CURTAIN WALL SYSTEM

OUTSTANDING SOUND PERFORMANCE



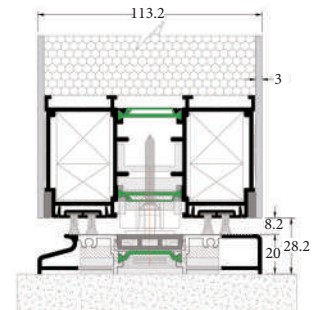
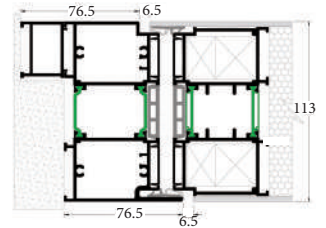
EW50 CURTAIN WALL SYSTEM

FOR AFFORDABLE QUALITY, FULLY MEETING ALL STABILITY AND SAFETY REQUIREMENTS



D110 PIVOT DOOR

COMBINING INNOVATIVE TECHNOLOGIES WITH SPECIAL DESIGN LINES



PERGOLAS

FREEDOM BIOCLIMATIC PERGOLA



The Freedom pergola has obtained certification for its structural integrity against snow, wind load, and water leakage, affirming its durability and safety across diverse weather conditions. This certification enhances outdoor spaces, ensuring long-term enjoyment.



MODERN DESIGN



TRADITIONAL DESIGN



CLASSIC LINE CLASSIC RAILINGS WITH MODERN AESTHETICS



CRYSTALLINE GLASS SUPPORTING SYSTEM



F50 ANODIZED ALUMINUM RAILINGS LOOK LIKE STAINLESS STEEL



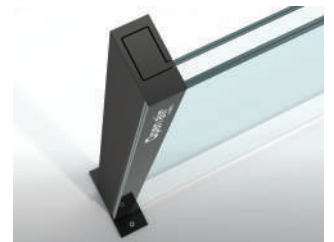
FUSION LINE

ALUMINUM AND GLASS RAILING SYSTEM



OPEN AIR

GLASS WINDSCREEN SYSTEM



GATES & FENCES UPGRADE YOUR HOME!



GATES FENCES

Enhance your home's security and style with our extensive range of Gates and Fences. Whether you select a classic system or a modern one, they will stand up to the test in time, as they are weather-resistant due to the high-quality powder coating and hardware.

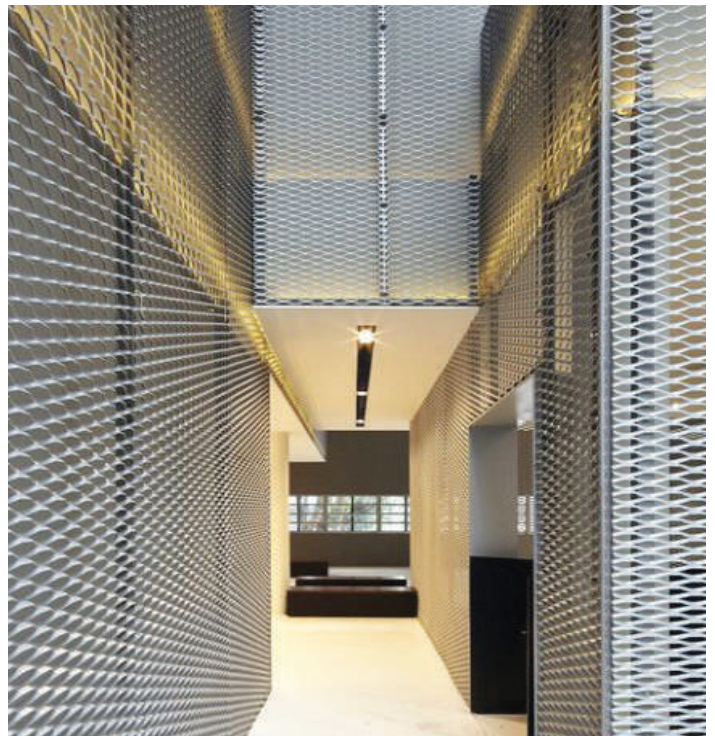
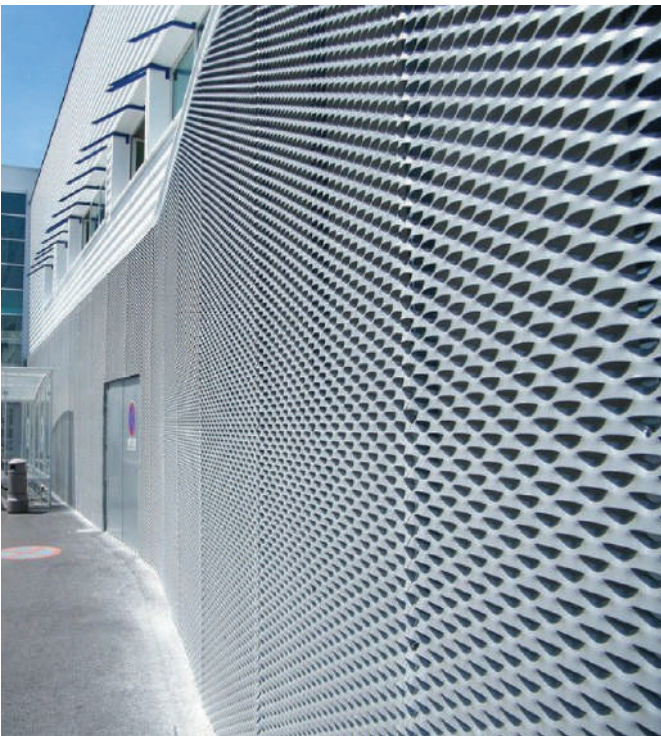


XPAND ARCHITECTURAL DESIGN MESHES



Welcome to a new world of possibilities!

Façades, balustrades, gates, fences, sunscreens, ceilings, special constructions are all up to your imagination and... **XPAND**

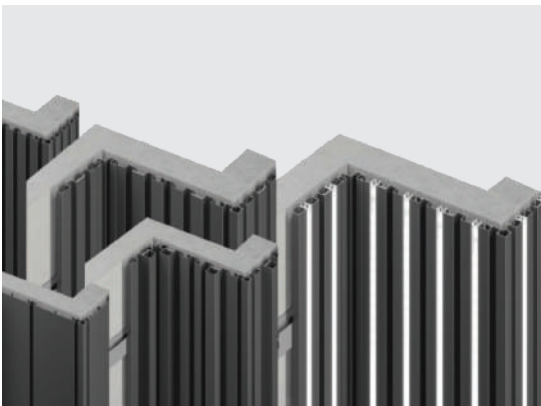
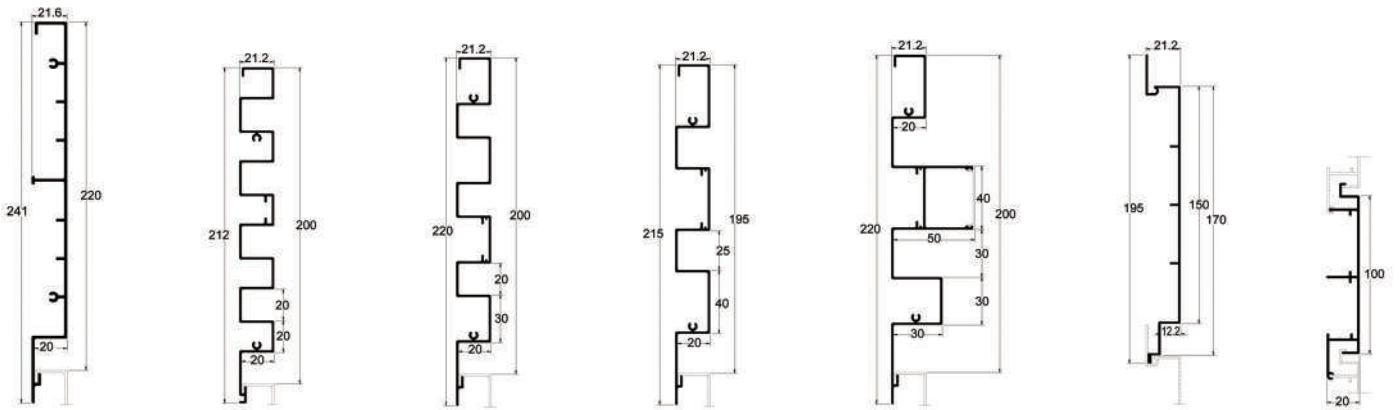


WALL & DECO WALL CLADDING

ALUMINCO[®]
ALUMINIUM BUILDING SYSTEMS



ACOUSTIC HARMONY: ISO 10140-2 COMPLIANT FOR RW 40 DB SOUND REDUCTION

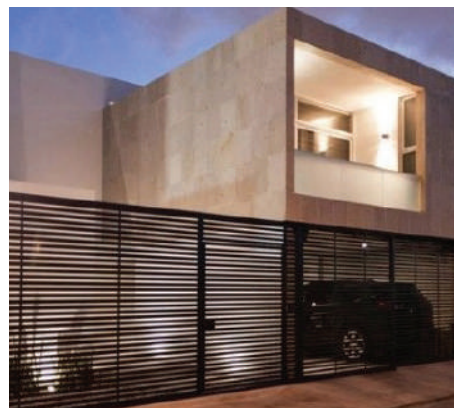
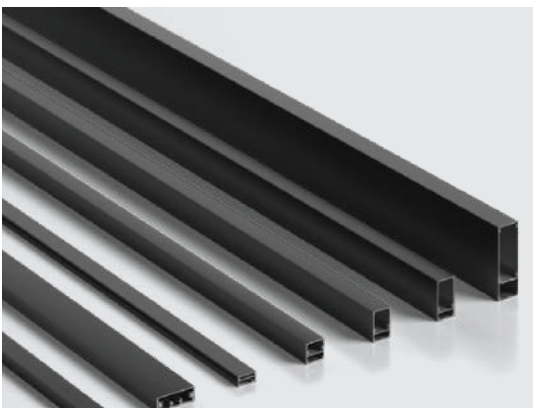
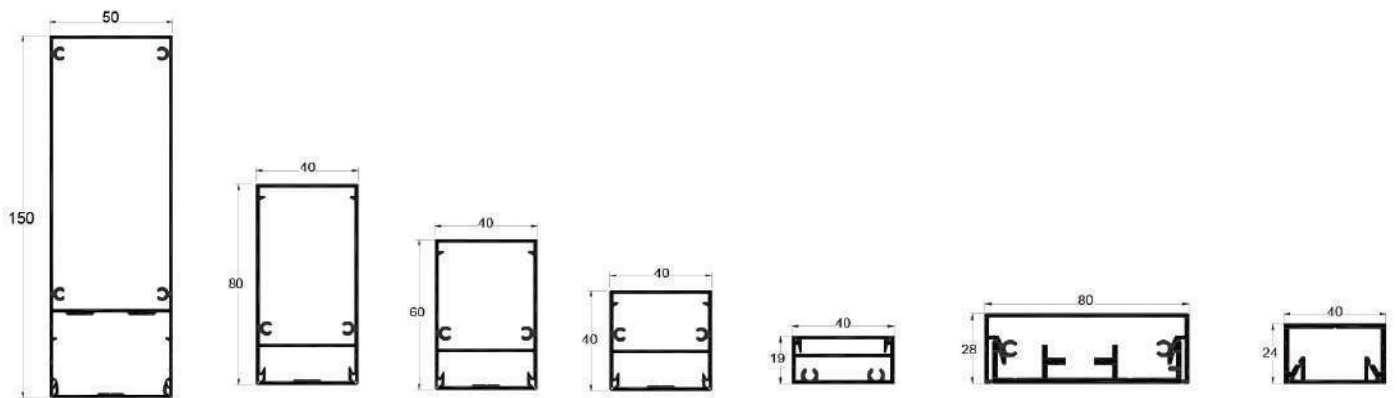


WALL & DECO DECO CLADDING

ALUMINCO[®]
ALUMINIUM BUILDING SYSTEMS



UNIQUE SYSTEMS THAT SIGNIFICANTLY IMPACT ALL LEVELS!



SOSOARES

A TRUSTED PARTNER IN ALUMINUM AND GLASS SOLUTIONS



Sosoares is a leading Portuguese industrial group specializing in aluminum and glass solutions. Founded in 1979, the company has grown steadily through a strong commitment to innovation, quality, and technological excellence, becoming a trusted international partner.

With more than four decades of experience, Sosoares has evolved into a solid industrial group that brings together several specialized companies focused on the design, development, production, and global commercialization of high-performance aluminum systems and advanced glass solutions suitable for various project types worldwide.

Its product portfolio includes high-performance thermal-break aluminum systems and minimalist aluminum solutions, engineered to meet rigorous thermal, structural, and aesthetic requirements, ensuring precision, durability, and performance.

Sosoares places strong emphasis on partnership and customer support, with dedicated technical teams providing comprehensive assistance throughout all project phases, including system selection, project development, and after-sales service. Continuous investment in innovation, quality, and sustainability positions Sosoares as a reliable and forward-looking supplier, aligned with contemporary architectural design and building performance standards.

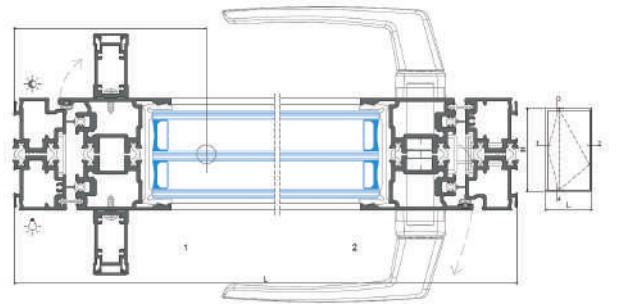


OS-PIVOT

MINIMALIST THERMAL INSULATION SYSTEM



Designed with ultra-slim profiles and built to support panels up to 500 kg, the OS-Pivot enables large-scale openings that redefine modern spaces. Capable of reaching 3×6 m in motorized configurations, it ensures exceptional structural strength and superior thermal insulation.

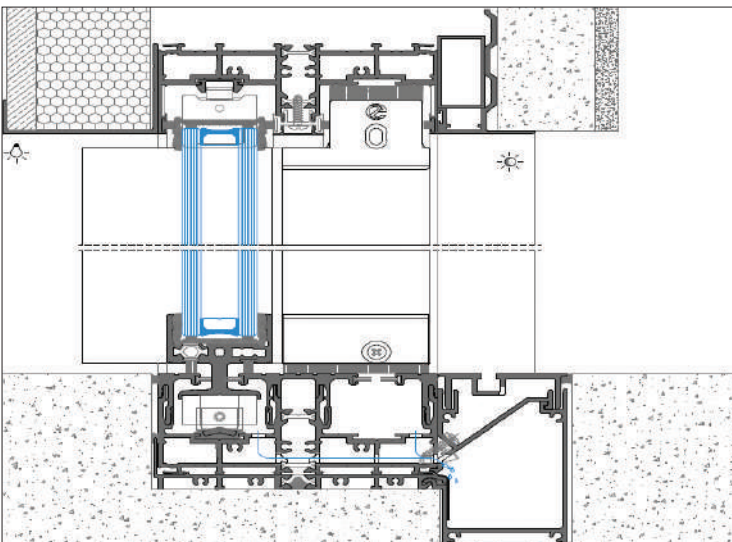


OS-SLIDING

MINIMALIST THERMAL INSULATION SYSTEM



Engineered to support large glazed panels with slim visible sections, this sliding system enhances energy efficiency. Its modular design allows for multiple configurations, including recessed thresholds, corner openings, a fully concealed frame, and **innovative integrated flyscreen solutions**.

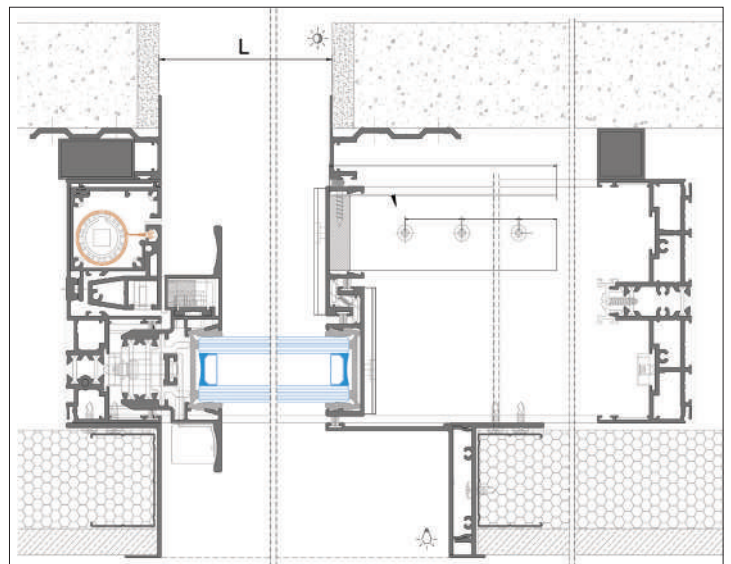


OS-SLIDING

MINIMALIST THERMAL INSULATION SYSTEM

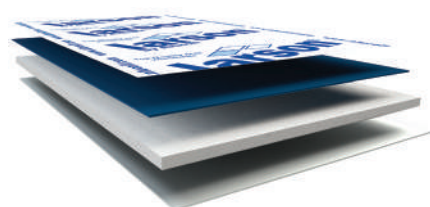


For larger installations, the system supports motorized operation to effortlessly handle sashes weighing up to 1,000 kg, ensuring smooth movement even for panels reaching 6 meters in height.





LARSON[®] ALUMINUM COMPOSITE PANELS

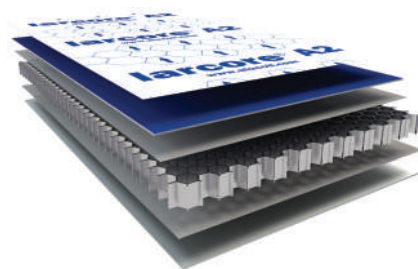


- Protective film
- ALUMINUM
- Core⁽¹⁾
- ALUMINUM

(1) Three possibilities:

- a) Mineral A2 core (Larson[®] A2 Fire Class Architectural A2-s1, d0 according to EN 13501-1)
- b) Mineral FR core (Larson[®] A2 Fire Class Architectural B-s1, d0 according to EN 13501-1)
- c) Polyethylene core (Larson[®] PE use is limited by specific standards / regulations in each country)

LARCORE[®] ALUMINUM HONEYCOMB PANELS



- Protective film
- ALUMINUM
- Bonding layer
- ALUMINUM HONEYCOMB CORE
- Bonding layer
- ALUMINUM



BIOROL S.A.

SECTIONAL DOORS

RESIDENTIAL AND INDUSTRIAL
THE COMBINATION OF ALUMINUM FRAMES AND POLYURETHANE PANELS IS UNLIMITED!



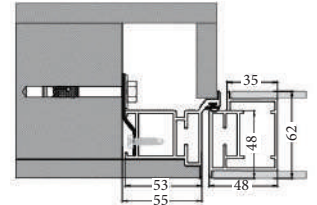
BIOROL S.A. sectional doors are engineered for both residential and industrial use, offering high security and thermal efficiency. Certified to EN 13241-1, these doors are built for long-term reliability using premium-grade materials.



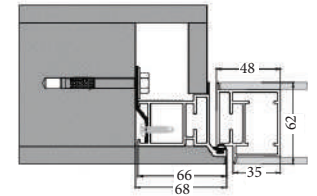
FLUSH DOOR



Pull Position



Push Position



FRAMED DOOR

FRAMELESS DOOR



SOFT-CLOSE SLIDING SYSTEM

PRIVACY AND ELEGANCE IN ONE SLIDING DOOR.



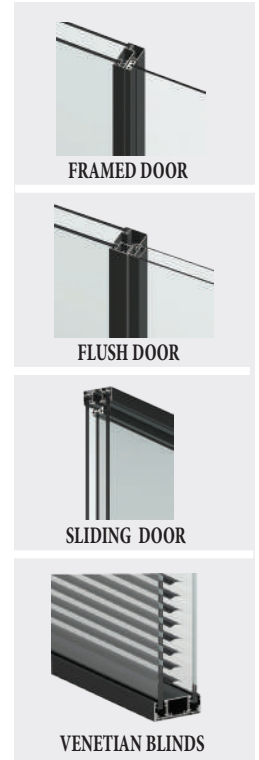
Telescopic full-frame sliding door, ideal for interior partitions, to seamlessly divide any space.



ALLURE

DOUBLE-GLAZED OFFICE PARTITION

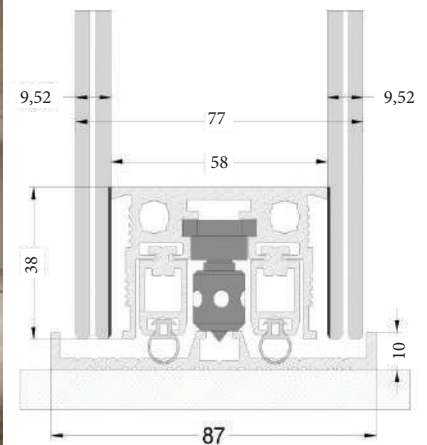
COMPATIBLE WITH FRAMED, FLUSH, AND SLIDING DOORS.



GF

DOUBLE GLAZED PARTITION

AN IDEAL SOLUTION FOR EFFECTIVE SOUNDPROOF PERFORMANCE.



A10 SINGLE GLAZED PARTITION WITH DIVISION

MAKE YOUR COMBINATION THROUGH VERTICAL AND HORIZONTAL PROFILES, KNITTING THE GRID WITH THE GLASS OF YOUR CHOICE.

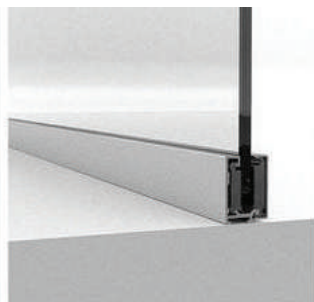


CORNER

PERIPHERY

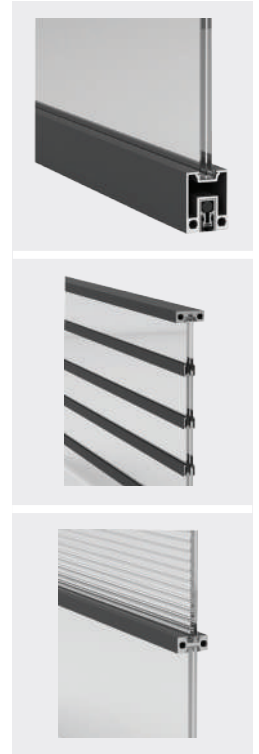
VERTICAL

HORIZONTAL

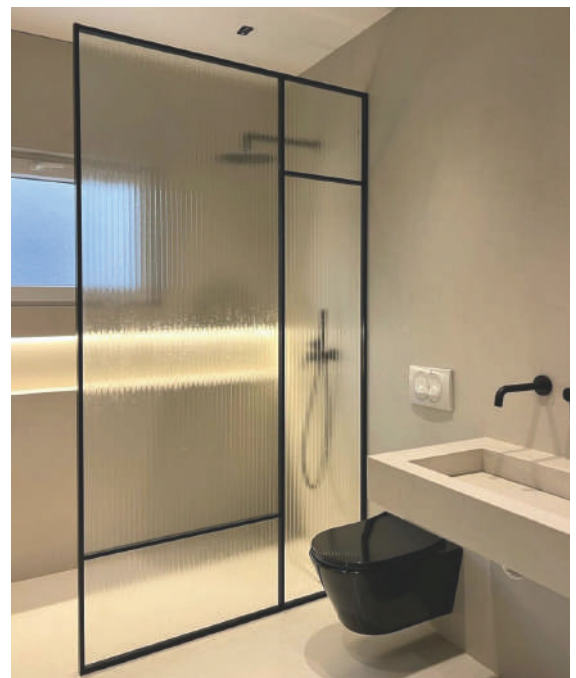


A11 SINGLE-GLAZED PARTITION

PARTITION SOLUTIONS FOR MODERN SPACES.



Elegance with our slim-profile single-glazed partition, featuring minimalistic design, easy installation, and versatile applications.



SHOWER CABINS DONE BY GLASS ART!

ELEVATE YOUR DAILY ROUTINE WITH OUR GLASS-CRAFTED SHOWER CABINS.

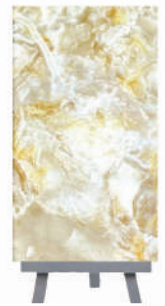


WHEN ART MEETS PRODUCTION !

WIDE RANGE OF DESIGN SOLUTIONS CUSTOMIZED TO FIT VARIOUS NEEDS

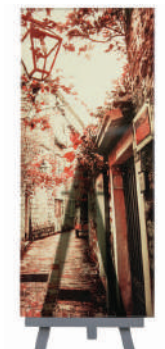
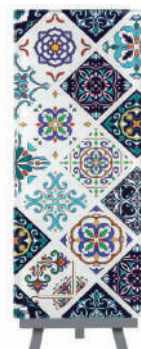
Onyx Glass

It doesn't only compete in **pricing, time, customizations**, and effort but also as ceramic printing depends on thermal colors combine with the glass itself, which make it a **lifetime warranty**, in addition to its durability and **artwork varieties**.



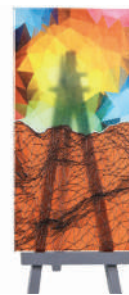
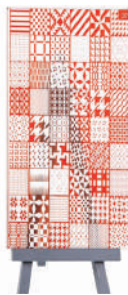
UV Standard

This beautiful technology uses the **ultra-violet LED lights** technique to dry **organic color ink**. It is printed and distributed the ink on a material's surface instantly for a **stunning interior look and feel**.



DG Relief

Relief printing is raised ink from the glass surface that you can feel the ink thickness with your hand. **It gives the glass a rich look.**



DG Mirror

One of the most challenging printing techniques, and with our **latest printing techs** on mirror, we have mastered it. So now we can add artistic visions.





1st Aluminum Showroom in Lebanon and KSA



● FACTORY

● LEBANON

- 📍 Industrial Area - Aley, Lebanon.
- ✉ P.O. Box: 20 Aley, Lebanon.
- 📞 +961 70 119 033
- ☎ +961 25 550 250 / +961 25 555 250
- 📠 +961 25 556 250
- ✉ info@alexco.com.lb

● SHOWROOM

- 📍 Amaret Chalhoub, Zalka Highway.
- 📍 Z.208 Building, Mezzanine Floor.
- 📞 +961 3 195 195
- ☎ +961 1 894 594
- ✉ Showroom@alexco.com.lb

● KSA

- 📍 Kingdom of Saudi Arabia
- 📍 Al-Kharj Industrial City
- 📞 +966 53 501 9248
- +966 55 602 5705
- ✉ info@alexco.com

OUR VIRTUAL REALITY SHOWROOM

Scan QR Code for
Alexco Showroom





#alexcoaluminum
f @ t in p g+ v
www.alexco.com.lb