

Your Gateway to Aluminum Excellence...



ALEXCO - LEBANON

About Alexco

With over 50 years of experience, Alexco has established itself as a premier provider of aluminum and glass solutions. We specialize in the design, fabrication, and installation of innovative enclosures for a wide range of structures, including towers, skyscrapers, luxurious villas, and prestigious hotels. Our commitment to exceptional quality, efficiency, and customer satisfaction has earned us a reputation for excellence in the industry. Backed by a skilled and dedicated team, we deliver tailored solutions that meet the unique needs of each project, ensuring a seamless and successful experience for our clients.

نبذة عن أليكسكو

إنّ خبرة أليكسكو الممتدة على مدى ٥٠ عامًا توطد مكانة الشركة كإحدى الشركات الرائدة في مجال صناعة الألمنيوم والزجاج. من خلال تخصصها في تلبيس المنشآت المصنوعة من الألمنيوم كالأبراج والفلل والفنادق، هي المعروفة بفعالية عملها ودقة مواعيدها. تلتزم أليكسكو بأعلى معايير الجودة، والنزاهة، والثقة في كل مشروع. تفتخر شركة أليكسكو بالتزامها ليس فقط بسلامة موظفيها، بل أيضًا بتطورهم المهني، مما يجعل البيئة الحاضنة في أليكسكو مثالية لإعداد قوى عاملة ذات مهارات تقنية عالية. تحرص شركة أليكسكو على رضا الزبائن، لذلك تركز على فهم احتياجات الزبون وتلبيتها من خلال حلول مخصصة، مما يضمن أفضل النتائج لكل مشروع.



ALEXCO - KSA



ISO Certification

Alexco prides itself on dedication to quality, fine management, and remarkable achievements.

ISO Certifications:

- Certificate ISO 9001:2015 No. 89949
- Certificate ISO 14001:2015 No. 89950
- Certificate ISO 45001:2018 No. 89948

CE Marking Authorization:

- Authorized by Aluminco SA for CE marking according to EN15088 standards.
- Validates capability to manufacture products according to European norms.

Commitment to Excellence:

- Continuous improvements in management, production, and workflow.
- Steadfast commitment to setting new standards of quality and innovation.

Experience excellence in every product, process, and interaction!

Projects

TOWERS

BUILDINGS

VILLAS

COMPLEXES

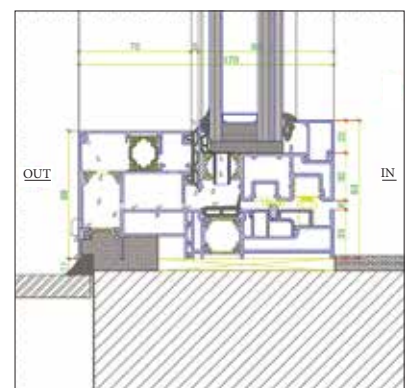
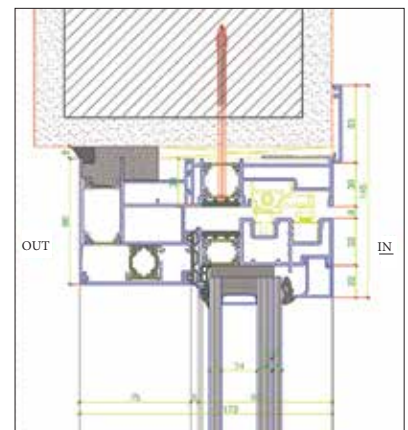
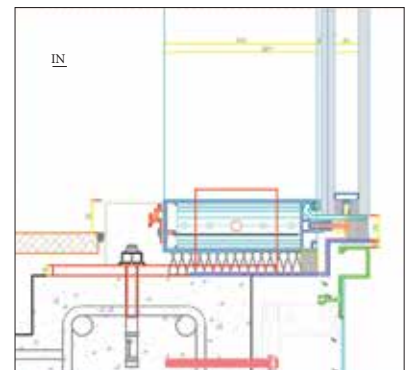
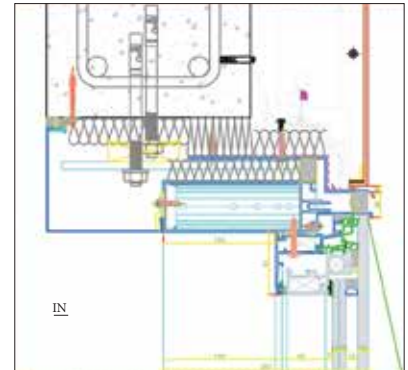
HOSPITALS

UNIVERSITIES

BANKS

Four Seasons Hotel

Consultant: CVTEC

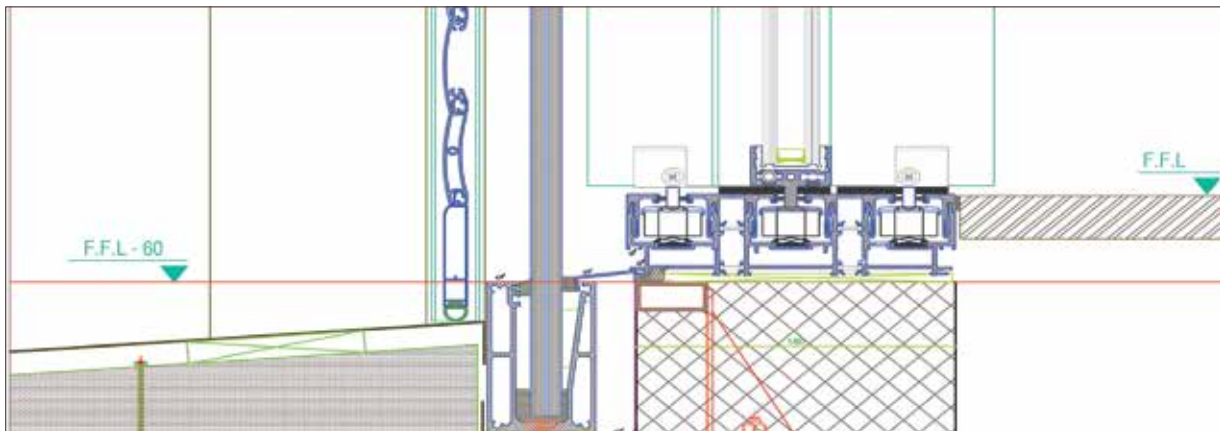
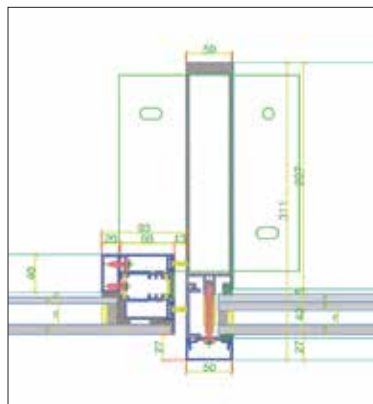
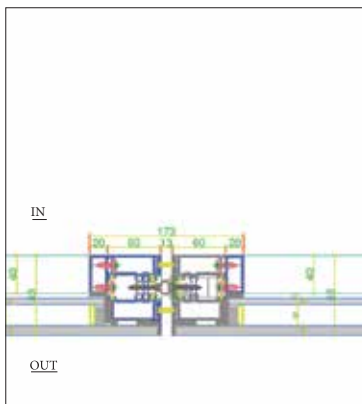


Alexco exceeds conventional industry benchmarks with Four Seasons, achieving exceptional thermal and sound insulation through High-performance Aluminum and Glass alongside SL2900 Eco-Slide system. This results in unmatched decibel levels, notably standing out in global competition among five companies, solidifying our position as a leader in high-performance sound technology.

Four Seasons is a testament to our commitment and sets a new benchmark for the industry.

Fawaz Building

Architect: Youssef Haidar



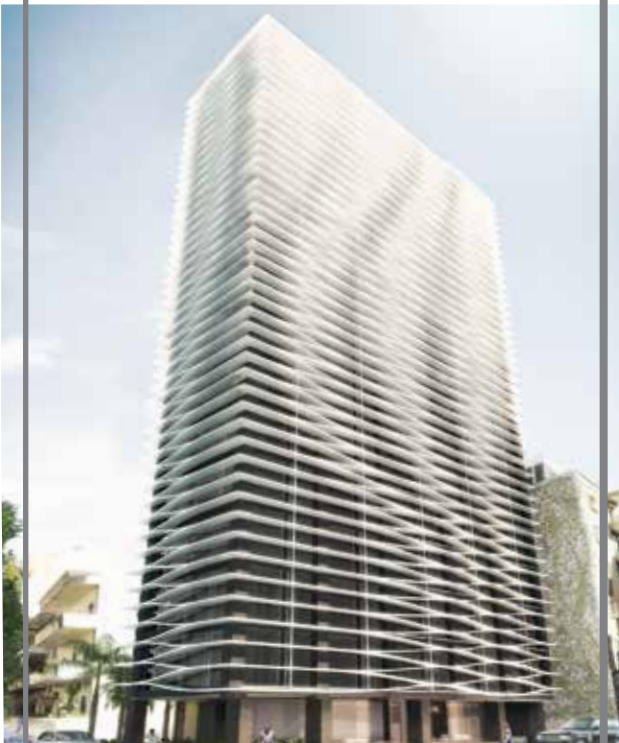
Beirut Harbour

Architect: Fouad Menem



The Wave

Architects: SOMA



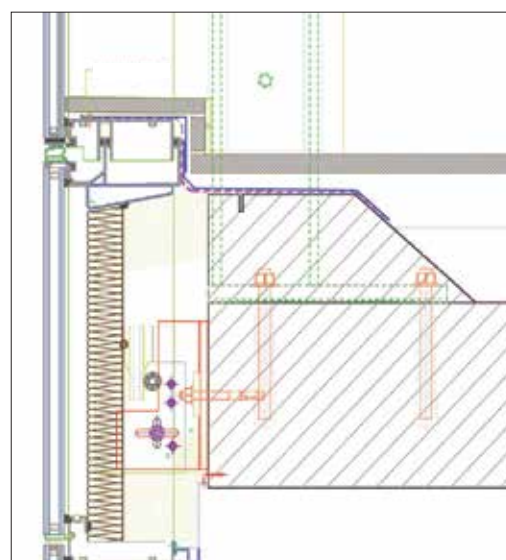
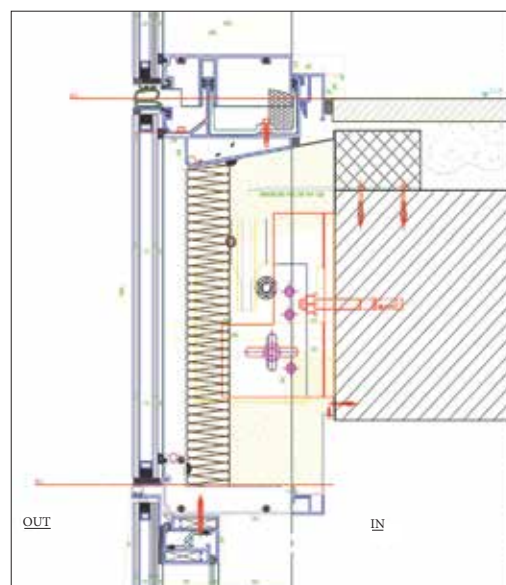
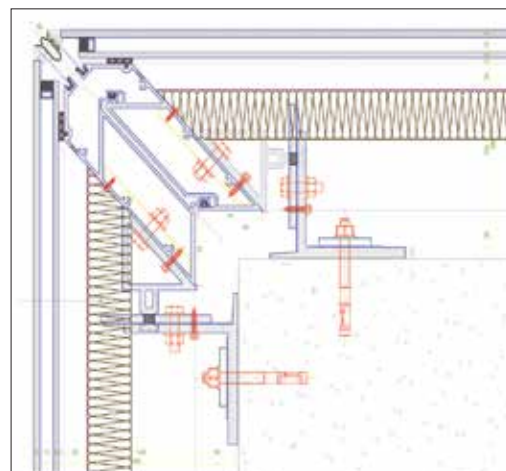
Mondrian Tower

Consultant: Fouad Samara Architects



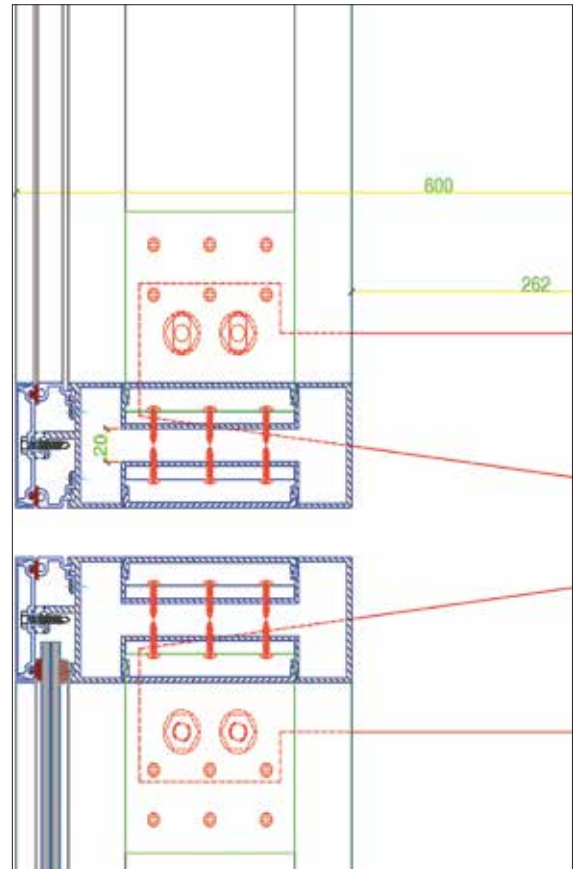
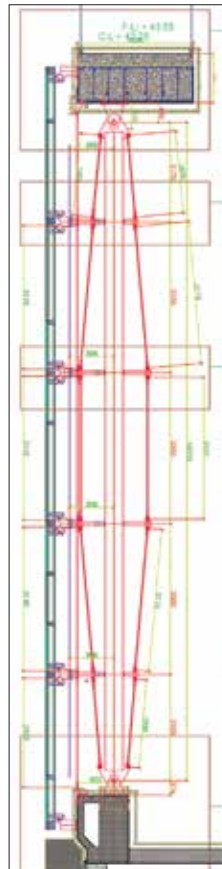
Marina Gate Tower

Consultant: Erga Group



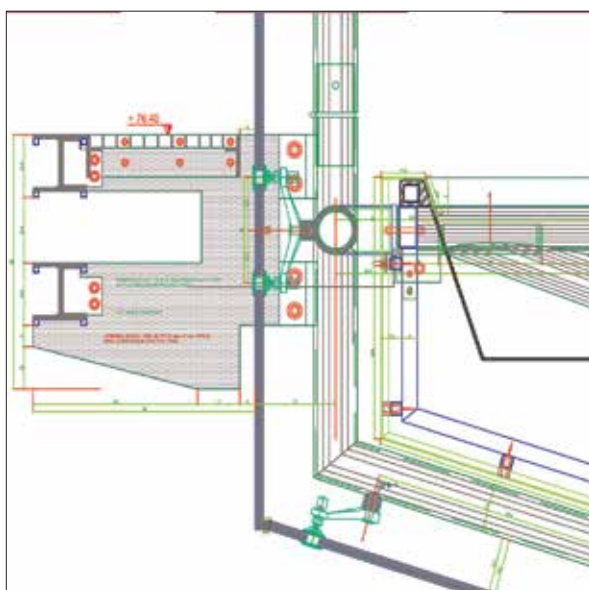
Beirut Gardens

- Consultant: Erga Group
- Architect: Arata Isozaki



Lebanese University-Tripoli

Consultant: Laceco Architects and Engineers



Centre Sofil

Architect: Pierre Nehmeh



Antelias

Architect: Richard Abi Rached



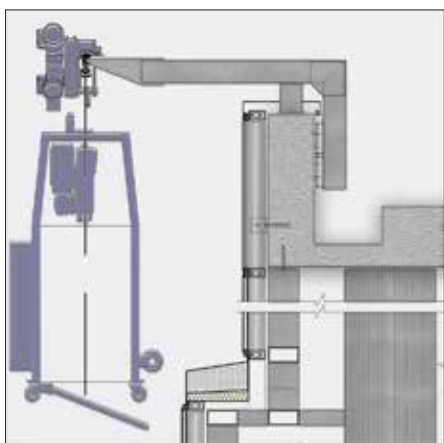
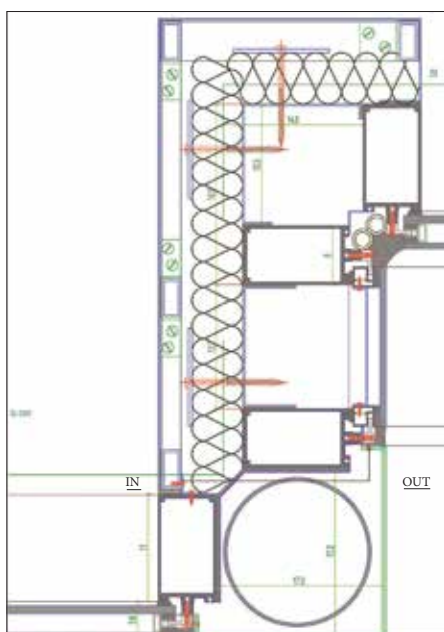
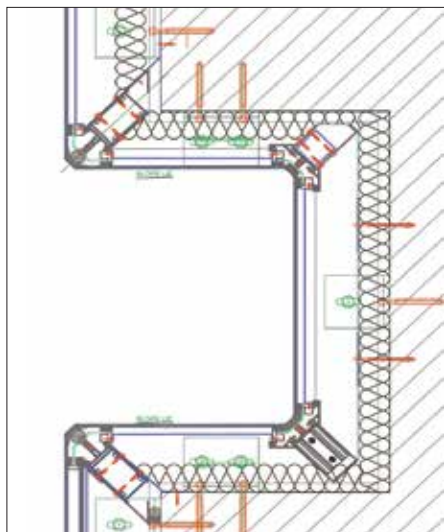
Royal Hills

Engineer: Hassib Ibrahim



Byblos Bank Africa (BBA) in Sudan

Consultant: A - Consult



Factory Loft

Architect: Bernard Khoury



Badaro Building

Architect: Roger Dib



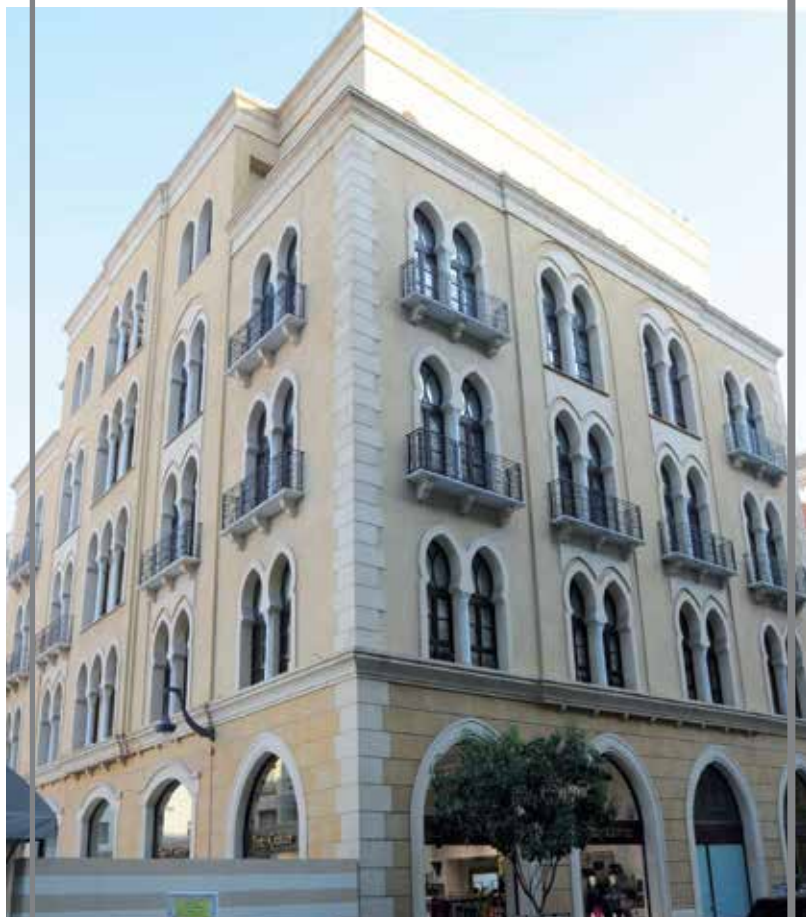
Dbayeh 546

Consultant - Architects: Badih and Kantar



108 Building

Consultant: Erga Group



Bliss Tower

Architect: Mohamad M. Arayssi



Etoile Realty Building

Consultant: Erga Group



Cezar Building

Architect: Khalil Akila



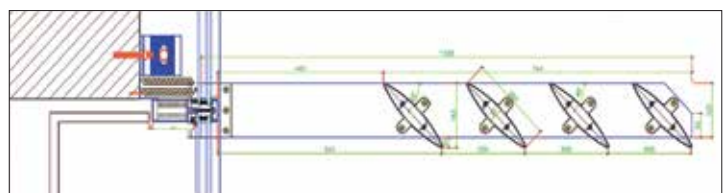
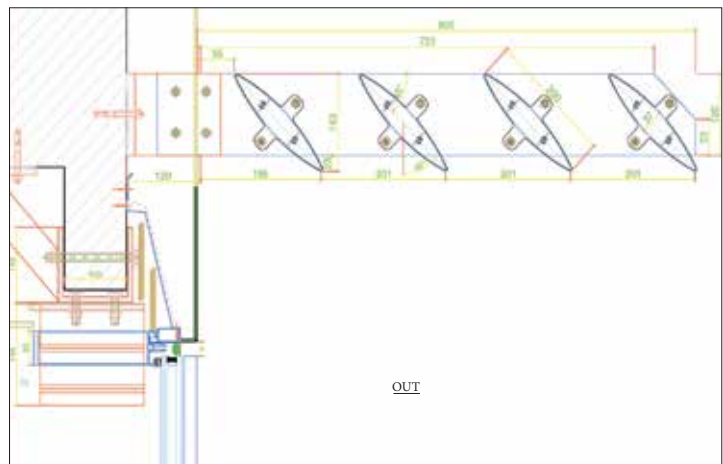
Saba Building

Consultant: Archika



Beam Building

Consultant: Rachid Karam



Movenpick Hotel-Beirut

Consultant: Erga Group



Dbayeh 209

Architect: Joseph Mouhanna



City Gate

Consultant: Trust Consult



ITICO Pharma Factory

Consultant: ASACERT



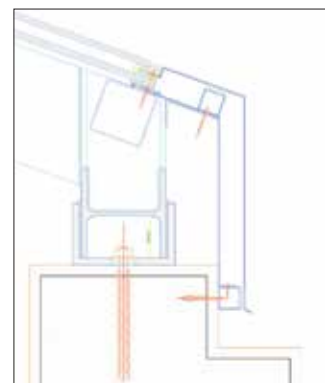
CCB Consulting Clinics

Consultant: Erga Group



LAU Medical Center-Rizk Hospital

Consultant: ACE



Aghasarkissian

Architect: Nagi Sfeir



Msaytbeh 3395

Architect: Youssef Haidar



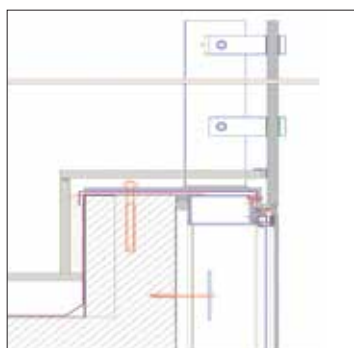
Arab Chamber of Commerce

Consultant: Pierre El Khoury Architects



Aley Commercial Center

Consultant: Spirit Design Group



Msaytbeh 4561

Architect: Khodor Husseini



Fochville

Architect: Rachid Karam (R&K)



K-Tower

Architect: Samir Ghawi



Strassco Tower

Architect: Sarkis Azadian



I Design

Architect: Talal Antar



Arcade Congo

Consultant: Continuum Rossignol Associes



Zardman - Al Moudir Building

Architect: Georges Bechara



Capital Garden

Consultant: Erga Group



Zalka Mall.EIT Group

Consultant: Al Diar



Sport Et Loisir Solidaire

Consultant: Erga Group



Arapco - Sudan

Consultant: Architect Abdallah Sabbar



Baabda 3180

Architect: Gaby Wakim



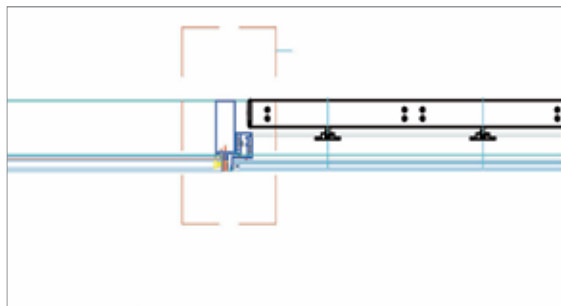
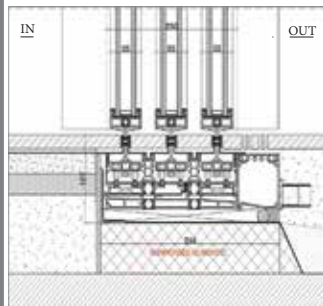
Sawaki Villa

Interior Architect: Sandra Ghanous



Nassif Ragheb Villa

Consultant: Erga Group



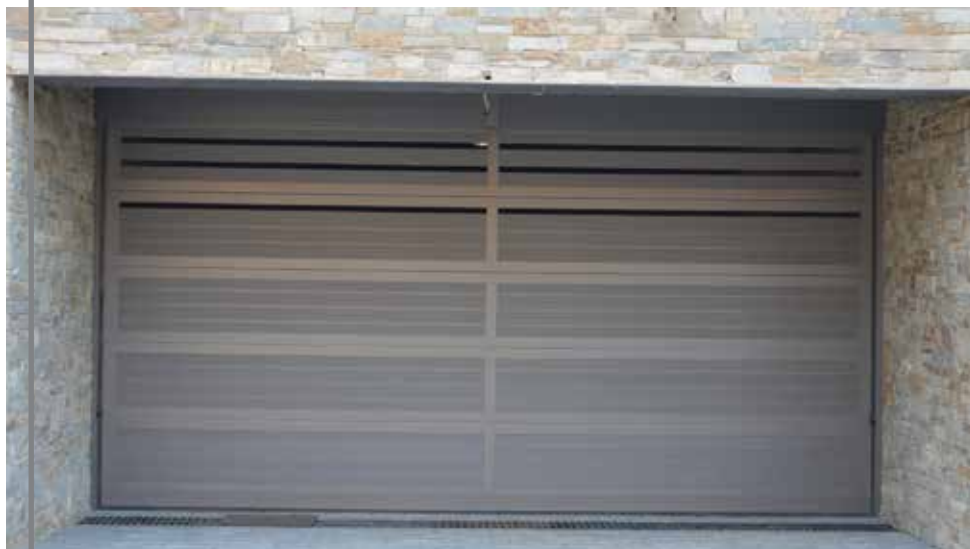
Zareh Khederalian Villa

Architect: Malek Salame



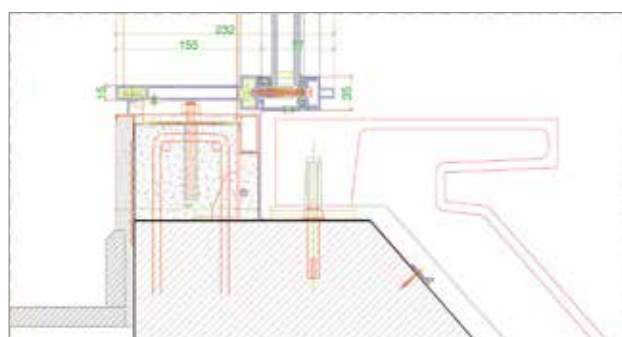
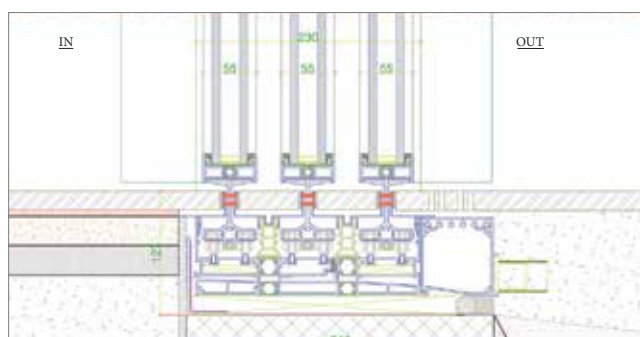
Ali Dakik Villa

Consultant: Trust Consult



Joseph Younes Villa-Beitmisk

Architect: Hassan Dergham



Wahib Gaith Villa

Architect : Salman Kiwan



Tiri Villa

Architect: Hassan Dergham



Bilal Hussein Villa

Bahja Group



Darazi Villa

Architect: Shadi Al Dada



Farid Khalil Villa

Architect: Bernard Khoury



Youssef Ghaith Villa

Architect: Makram El Kadi



Marwan Abi Farah Villa

Architect: Amir Moujaes



Ghassan Chidiac Villa

Architect: Kamal Aghostine



Khenshara Project

Architect: Georges Kfoury



South Arc Villa

Architect: Noaman Hachem



Khalil Abou Jaoude Villa

Architect: Chady Bteich



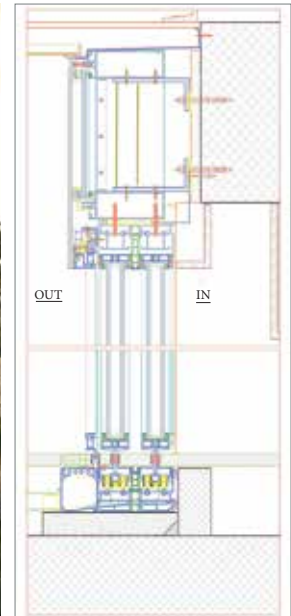
Mirna Tohme Villa

Architect: Georges Hajj



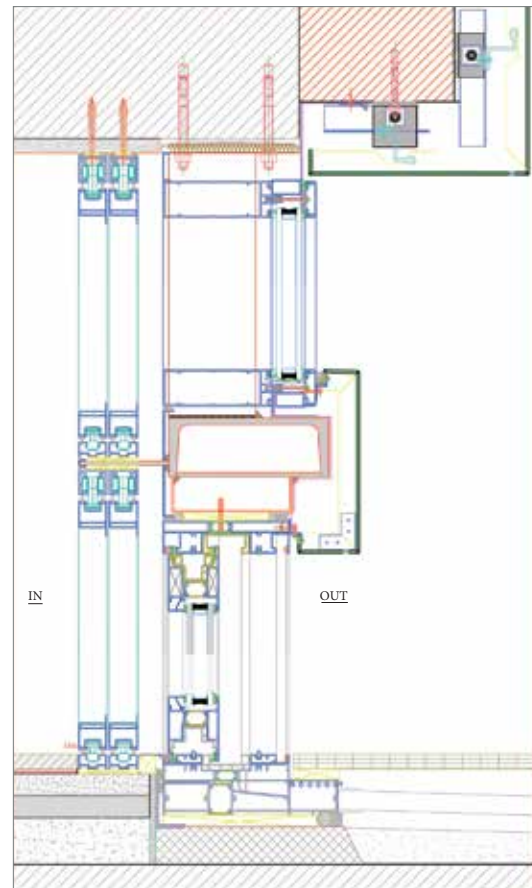
Qornet Shahwan Villa

Architect: Rainier Freiji



Iyad Abdel Nour Villa

Architect: Marie-Rose Hobeika



Mona Chehab Villa

Architect: Walid Youssef



Patrick Tohme Villa

Architect: Serge Abi Saleh



Hassan Nassour Villa

Interior Designer: Hassan Kheil



Mansouri Villa

Architect: Mahmoud Damerji



Elie Abou Akl Villa

Architect: Fady Aoun



Najjarieh Villa

Architect: Said Tarraf



Elie Hakim Villa

Architect: Marie-Rose Hobeika



Palais Présidentiel - Conakry

Architect: Claude Missir



Jamal Sayegh Villa

Consultant: Trust Consult



Kalash Villa

Architect: Hassan Sherkawi



Obhur Villa-KSA

Consultant: IDEAS Design



Fawzi Karam Villa

Consultant: Erga Group



Berbara Villa

Architect: Georges Al Chaer



Gaby Kaii Villa

Architect: Georges Kfoury



Marwan Moukarzel Villa

Architect: Jean-Claude Najem



Lina Al Awar Villa - Washington



Chabrouh Villa

Architect: Roland El Khoury



Salim Fakhoury Villa

Architect: Youssef Nour



Yahchouchi Villa

Architect: Charly Nicolas



Mohammad Chehab Villa

Engineer: Zouheir Kaedbey



Jaffal Villa

Architect: Simone Kosremelli



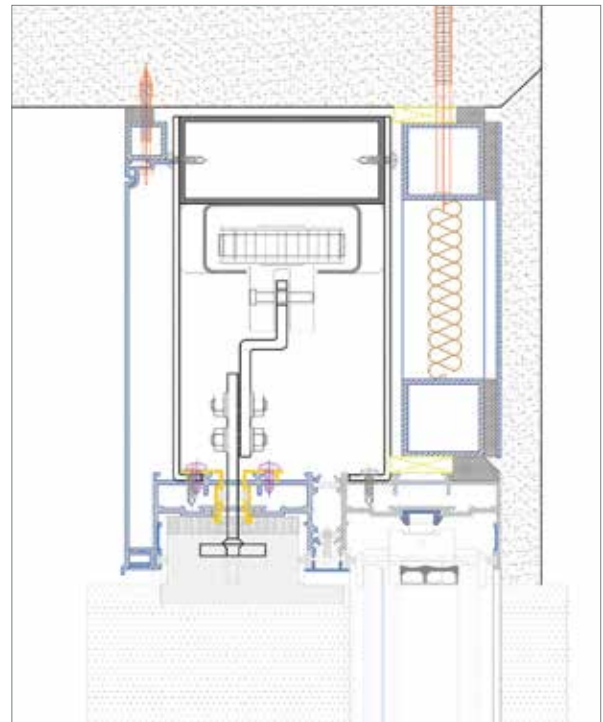
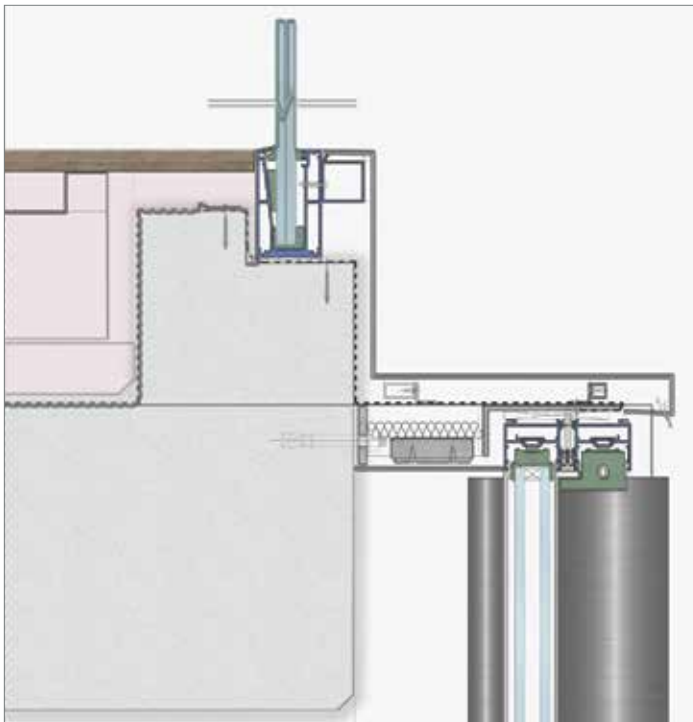
Bhamdoun Villa

Consultant: Laceco Architects and Engineers



Fagra Villa

Architect: Youssef Mallat



Rahi Villa

Architect: Rony Fatté



Orchard Project

Architect: Karim Nader



Alain Hajar Villa

Architect: Richard Abi Rached



Hassan Ghandour Villa

Architect: Sarkis Azadian



Zainab Khalil Villa

Architect: Mahmoud Nazzal



Dr. Raed Lattouf Villa

Architect: Akl Akl



Pascal Sarkis Villa

Architect and Artist: Amine Jules Iskandar



Jihad Al-Arab Villa

Architects: Mario Ghalieh & Michel Lamaa



Products

ALUMINCO
ALUMINIUM BUILDING SYSTEMS


Alucoil
Grado Aluminio

 **BIOROL** S.A.

 **PCA**
BUILD SMART.
BUILD DIFFERENT.


DG
Decorative Glass

Aluminco Global Presence

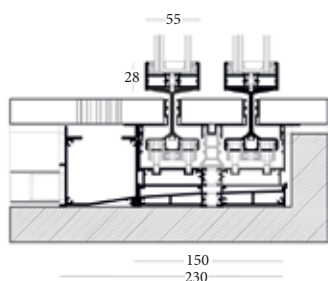
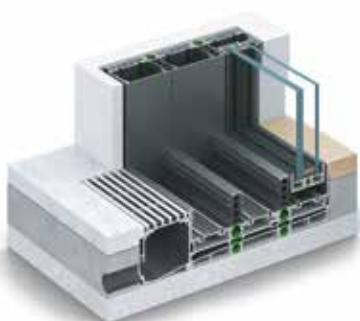




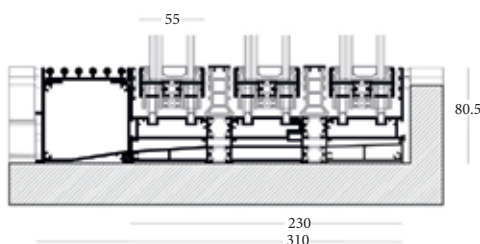
SL55 SKYLINE INFINITY

NEW GENERATION OF ALUMINCO SLIM PROFILE SYSTEM

The **SL55** Infinity is top-notch SKYLINE proposal for structures in absolute minimal design. All design elements strive to convey the message of simplicity, allowing for light, form, material, space, and nature to provide the very best of living conditions.



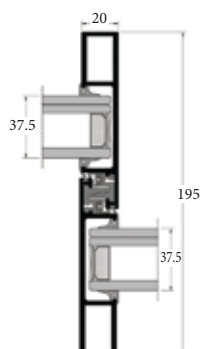
HIDDEN TRACK



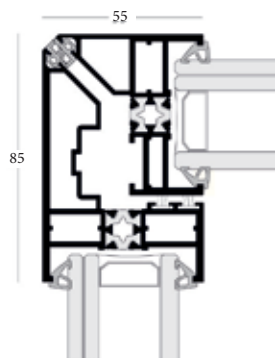
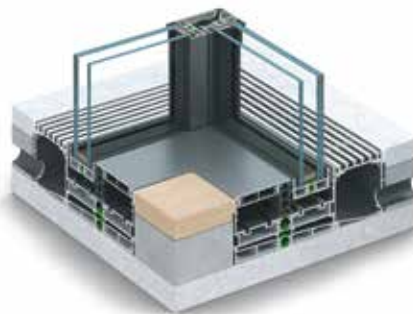
HIDDEN SASH



SL55 FH THE FULL HANDLE EDITION



INTERLOCK



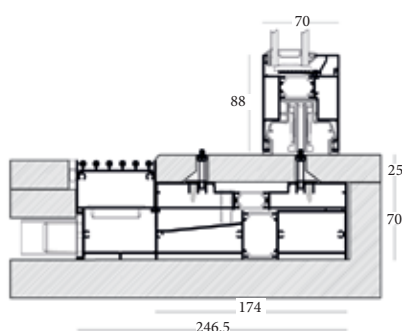
CORNER OPENING

The **SL55 FH** Infinity is designed to make the best of it, while offering an atmospheric blend of style and top quality with optimum comfort features.

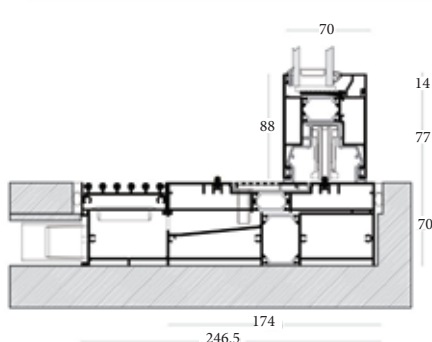


SL2700 SKYLINE THE GREAT WIDE !

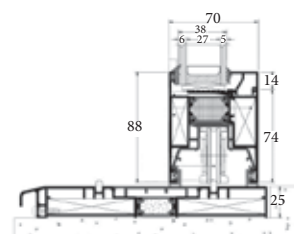
LIFT & SLIDE THERMAL INSULATING SYSTEM FOR HIGH-END STRUCTURE



HIDDEN TRACK



FLAT TRACK



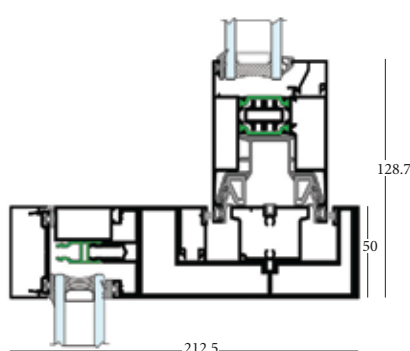
FLAT BOTTOM TRACK



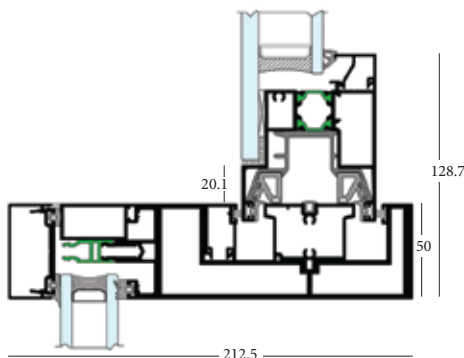
SL2750

LIFT & SLIDE SYSTEM COMBINED WITH CURTAIN WALL

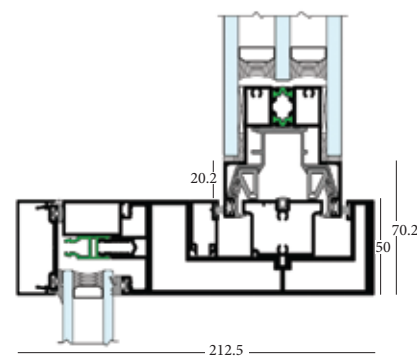
Highly insulated system of lift-and-slide frames combined with high-end **Curtain Wall**. Only 50 mm visible width of mullions and transoms.



STANDARD GLASS



SEMI - STRUCTURAL GLASS

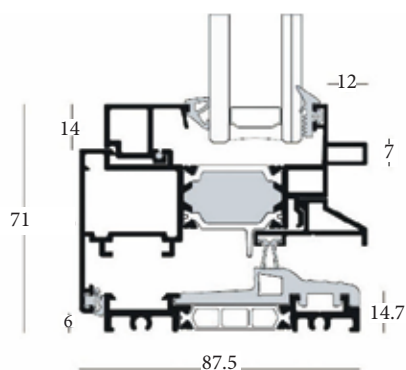
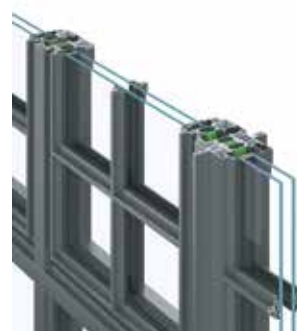


STRUCTURAL GLASS

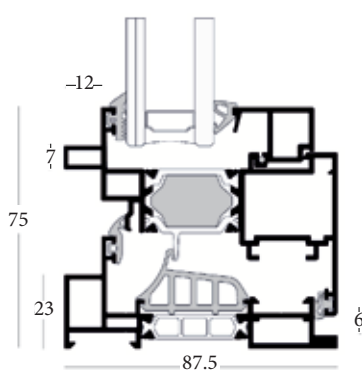


W85 ST SKYLINE RETRO STYLE

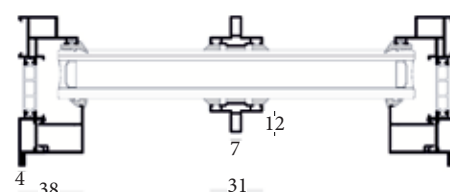
THE W85 RETRO STYLE IS A SKYLINE HIGHLY INSULATED HINGED SYSTEM



LOW THRESHOLD



LOW FRAME

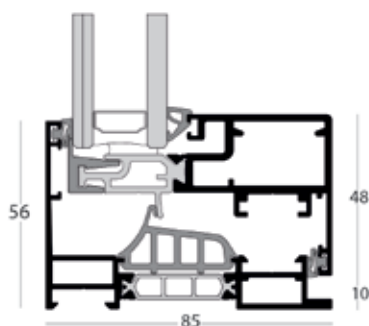
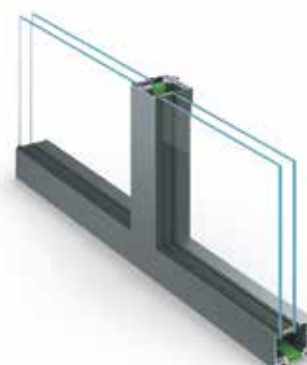


GEORGIAN BARS

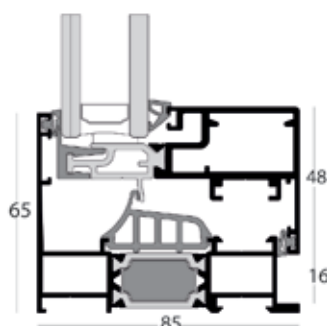


W85 HS SKYLINE VIEW MASTER

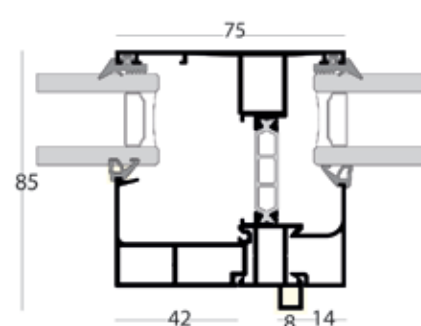
THE W85 HIDDEN SASH IS A SKYLINE HIGHLY INSULATED HINGED SYSTEM



LOW FRAME



STANDARD FRAME

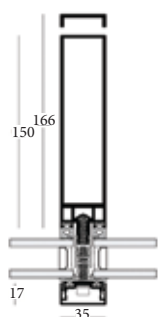


ELEGANT JOINT

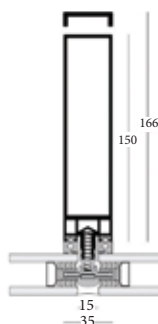


CW35 SKYLINE STYLE SETTER

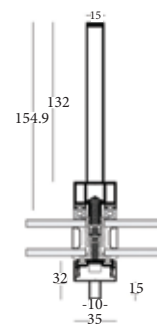
MINIMAL DESIGN CURTAIN WALL SYSTEM



STANDARD



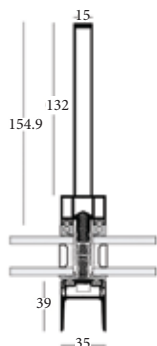
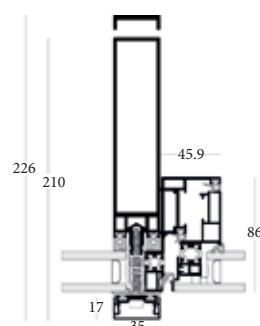
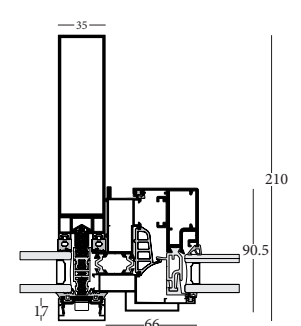
STRUCTURAL



RETRO



Simplicity at its best, SKYLINE CW35 is the new generation of Aluminco's curtain wall system, which offers maximum transparency due to minimal face widths of just 35 mm wide.


INDUSTRIAL

PROJECTED OUTWARD WINDOW

**CONCEALED SASH
TILT & TURN WINDOW**



SL2450 SLIDING SYSTEM

THERMAL INSULATION SYSTEM WITH MINIMAL 3CM FACE WIDTH



SL320 SLIDING SYSTEM

NON-THERMAL SYSTEM WITH MINIMAL 3CM FACE WIDTH





FD75 MINIMAL FOLDING SYSTEM

MINIMAL FOLDING THERMAL INSULATING DOOR SYSTEM FOR HIGH COMFORT



METICULOUSLY AND ELEGANTLY, THE FD75 IS DESIGNED TO MAXIMIZE NATURAL DAYLIGHT, ENHANCE VIEWS, AND DELIVER EXCEPTIONAL PERFORMANCE.





W450 TILT & TURN
THERMAL INSULATION SYSTEM



W540 TILT & TURN
NON-THERMAL SYSTEM



W4750 ADVANCED TILT & TURN
THERMAL INSULATING SYSTEM FOR HIGH REQUIREMENTS





SH750 / SH700 ROLLING SHUTTERS

FOR HIGH AESTHETICS AND PROTECTION



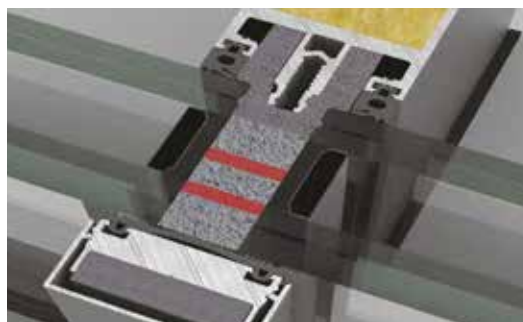
SH3200 SHUTTER SYSTEM

FOR PASSIVE SOLAR SHADING SUITABLE FOR RESIDENTIAL BUILDINGS



EW50 SP CURTAIN WALL SYSTEM

OUTSTANDING SOUND PERFORMANCE



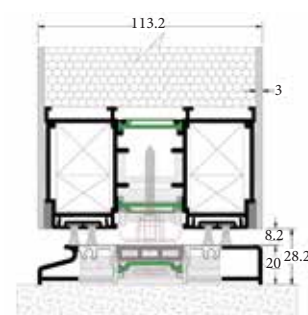
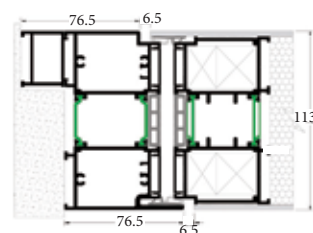
EW50 CURTAIN WALL SYSTEM

FOR AFFORDABLE QUALITY, FULLY MEETING ALL STABILITY AND SAFETY REQUIREMENTS



D110 PIVOT DOOR

COMBINING INNOVATIVE TECHNOLOGIES WITH SPECIAL DESIGN LINES



PERGOLAS

FREEDOM BIOCLIMATIC PERGOLA



The Freedom pergola has obtained certification for its structural integrity against snow, wind load, and water leakage, affirming its durability and safety across diverse weather conditions. This certification enhances outdoor spaces, ensuring long-term enjoyment.



MODERN DESIGN



TRADITIONAL DESIGN



CLASSIC LINE

CLASSIC RAILINGS WITH MODERN AESTHETICS



CRYSTALLINE GLASS SUPPORTING SYSTEM



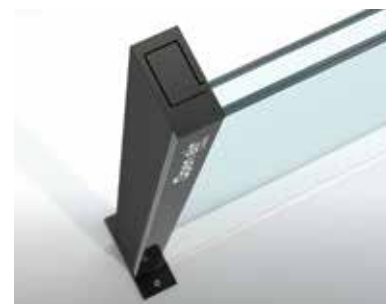
F50 ANODIZED ALUMINUM RAILINGS LOOKS LIKE STAINLESS STEEL



FUSION LINE PREMIUM RAILING SOLUTIONS



OPEN AIR GLASS WINDSCREEN SYSTEM



GATES & FENCES

UPGRADE YOUR HOME!



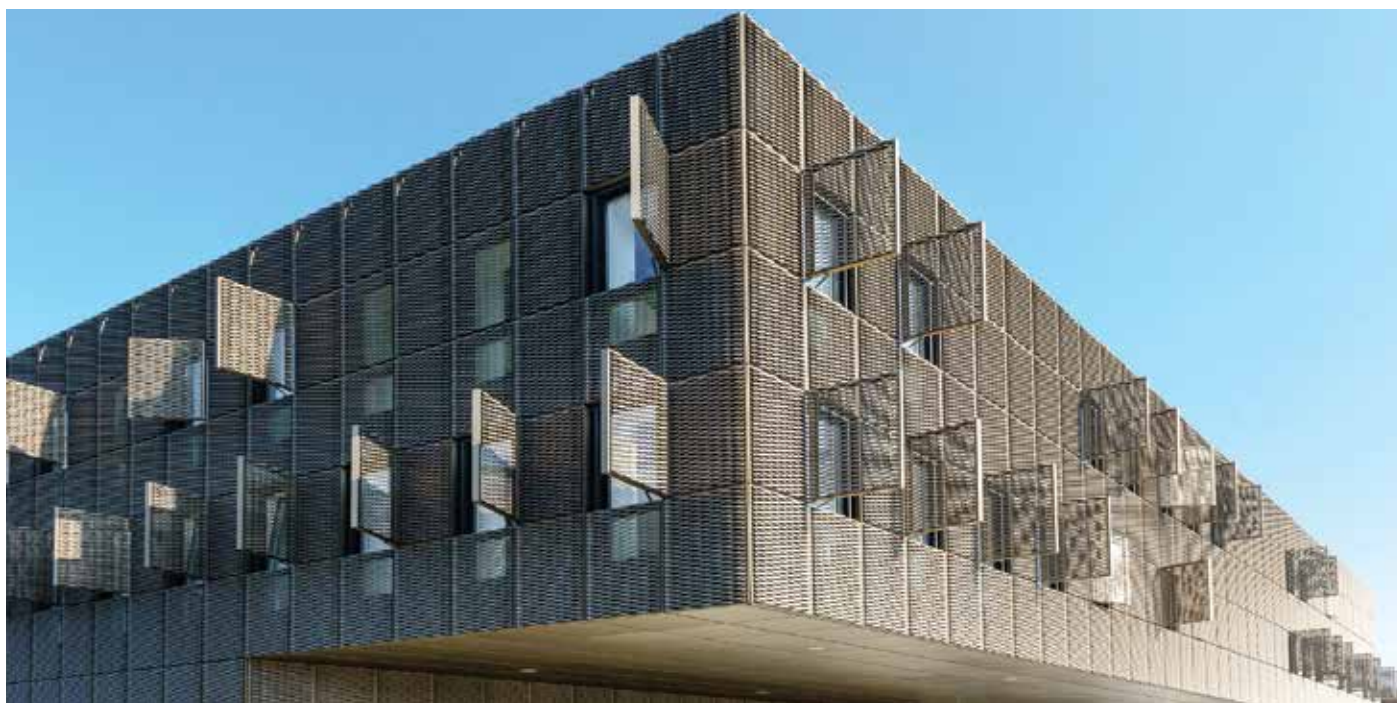
GATES FENCES

Enhance your home's security and style with our extensive range of Gates and Fences.

Whether you select a classic system or a modern one, they will stand up to the test in time, as they are weather-resistant due to the high-quality powder coating and hardware.



XPAND ARCHITECTURAL DESIGN MESHES



Welcome to a new world of possibilities!

Façades, balustrades, gates, fences, sunscreens, ceilings, special constructions, are all up to your imagination and... **XPAND**

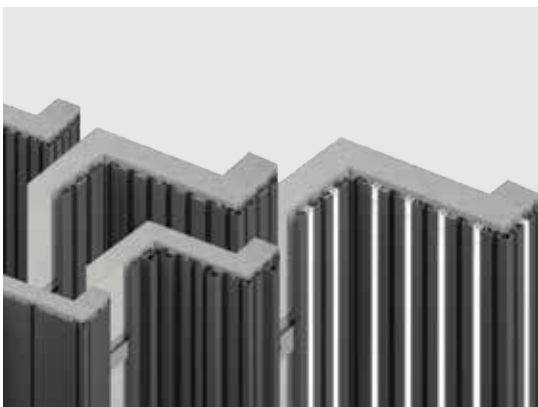
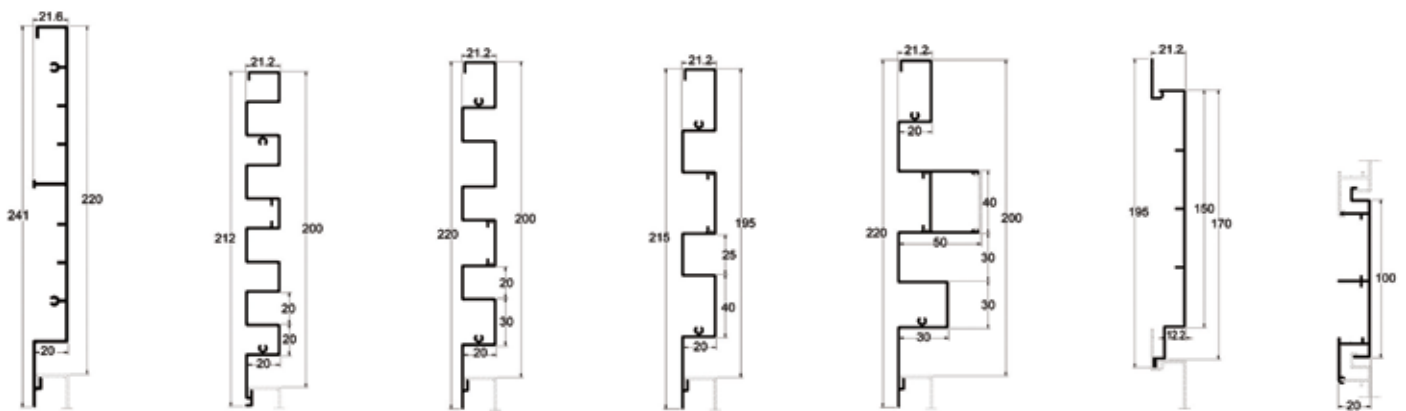


WALL & DECO WALL CLADDING

ALUMINCO[®]
ALUMINIUM BUILDING SYSTEMS



ACOUSTIC HARMONY: ISO 10140-2 COMPLIANCE FOR R_w 40 dB SOUND REDUCTION.

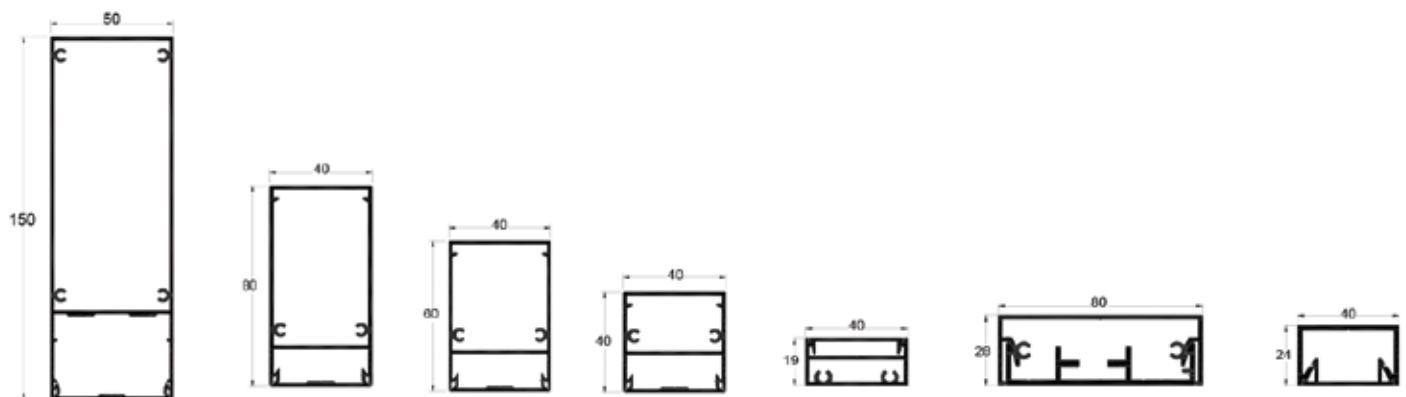


WALL & DECO DECO CLADDING

ALUMINCO[®]
ALUMINIUM BUILDING SYSTEMS

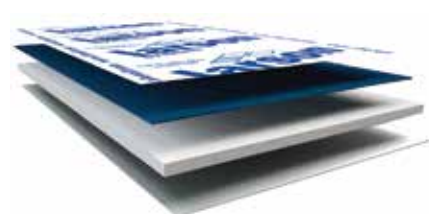


UNIQUE SYSTEMS THAT SIGNIFICANTLY IMPACT ALL LEVELS!





LARSON[®] ALUMINUM COMPOSITE PANELS

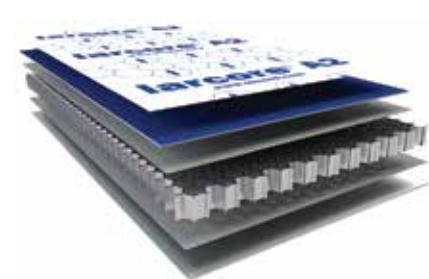


- Protective film
- ALUMINUM
- Core ⁽¹⁾
- ALUMINUM

(1) Three possibilities:

- a) Mineral A2 core (larson[®] A2 Fire Class Architectural A2-s1, d0 according to EN 13501-1)
- b) Mineral FR core (larson[®] A2 Fire Class Architectural B-s1, d0 according to EN 13501-1)
- c) Polyethylene core (larson[®] PE use is limited by specific standards / regulations in each country)

LARCORE[®] ALUMINUM HONEYCOMB PANELS



- Protective film
- ALUMINUM
- Bonding layer
- ALUMINUM HONEYCOMB CORE
- Bonding layer
- ALUMINUM



BIOROL S.A.

SECTIONAL DOORS

RESIDENTIAL AND INDUSTRIAL
COMBINATION BETWEEN ALUMINUM FRAME AND POLYURETHANE PANELS IS UNLIMITED!



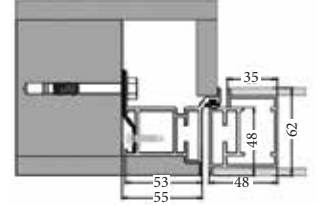
Sectional overhead door is an exceptional product made of Aluminum with Glass panels and able to operate for a long time without any problems. To make this happen BIOROL S.A. uses only the best materials in its construction .



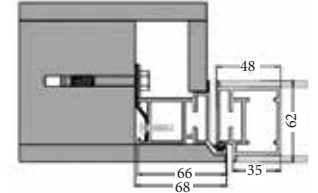
FLUSH DOOR



Pull Position



Push Position



FRAMED DOOR



FRAMELESS DOOR



A10 SINGLE GLAZED PARTITION WITH DIVISION

MAKE YOUR COMBINATION THROUGH VERTICAL AND HORIZONTAL PROFILES KNITTING THE GRID WITH THE GLASS OF YOUR CHOICE.



CORNER

PERIPHERY

VERTICAL

HORIZONTAL



A11 SINGLE GLAZED PARTITION

PARTITION SOLUTIONS FOR MODERN SPACES.



Elegance with our Slim Profile Single-Glazed Partition, featuring minimalistic design, easy installation, and versatile applications.



V2000

SOFT CLOSE SLIDING SYSTEM

COMBINES PRIVACY AND ELEGANCE IN ONE SLIDING DOOR.



Telescopic full frame sliding door ideal for interior partitioning in order to divide your space while choosing through a variety of colors and types of glass.



ALLURE

DOUBLE GLAZED OFFICE PARTITION

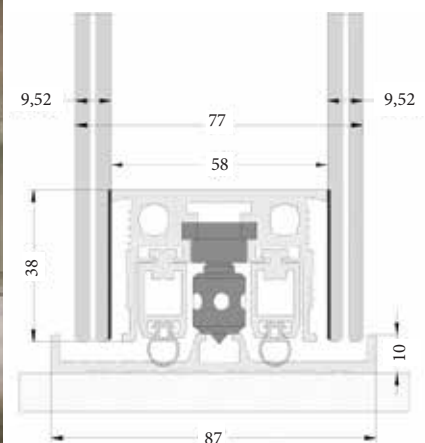
PARTITION COMPATIBLE WITH FRAMED, FLUSH, AND SLIDING DOORS.



GF

DOUBLE GLAZED PARTITION

AN IDEAL SOLUTION FOR EFFECTIVE SOUNDPROOF PERFORMANCE.





SHOWER CABINS DONE BY GLASS ART!

ELEVATE YOUR DAILY ROUTINE WITH OUR GLASS-CRAFTED SHOWER CABINS.



WHEN ART MEETS PRODUCTION !

WIDE RANGE OF DESIGN SOLUTIONS CUSTOMIZED TO FIT VARIOUS NEEDS.

Onyx Glass

It doesn't only compete in **pricing, time, customizations**, and effort but also as ceramic printing depends on thermal colors combine with the glass itself, which make it a **lifetime warranty**, in addition to its durability and **artwork varieties**.



UV Standard

This beautiful technology uses the **ultra-violet LED lights** technique to dry **organic color ink**. It is printed and distributed the ink on a material's surface instantly for a **stunning interior look and feel**.



DG Relief

Relief printing is raised ink from the glass surface that you can feel the ink thickness with your hand. **It gives the glass a rich look.**



DG Mirror

One of the most challenging printing techniques, and with our **latest printing techs** on mirror, we have mastered it. So now we can add artistic visions.



50 YEARS OF
EXCELLENCE



ALUMINUM EXPERTS COMPANY

#alexcoaluminum
f i t l p g y
www.alexco.com.lb



1st Aluminum Showroom in Lebanon and KSA



● FACTORY

● LEBANON

- 📍 Industrial Area - Aley, Lebanon.
- ✉ P.O. Box: 20 Aley, Lebanon.
- 📞 +961 70 119 033
- ☎ +961 25 550 250 / +961 25 555 250
- 📠 +961 25 556 250
- ✉ info@alexco.com.lb

● SHOWROOM

- 📍 Amaret Chalhoub, Zalka Highway.
- 📍 Z.208 Building, Mezzanine Floor.
- 📞 +961 3 195 195
- ☎ +961 1 894 594
- ✉ Showroom@alexco.com.lb

● KSA

- 📍 Kingdom of Saudi Arabia
- 📍 Al-Kharj Industrial City
- 📞 +966 53 501 9248
- ☎ +966 55 602 5705
- ✉ info@alexcoksa.com

OUR VIRTUAL REALITY SHOWROOM

Scan QR Code for
Alexco Showroom

