

**Decorative Glass** EST. 1963

**Explore  
Further**

[www.decorativeglasseg.com](http://www.decorativeglasseg.com)

©2021 Decorative Glass EG.

ALL COPYRIGHTS RESERVED

Your  
Glass  
Advisor

I T ' S A L W A Y S A B O U T T H A T A N Y

A C H I E V E M E N T I S T H E L A S T T R Y



**Deco  
rative  
Glass** EST. 1963



Diversity

**ARTIS  
TIC**

**AUTHENTICITY**

Operational Excellence

INSPIRATIONS

Authentic soul **fascinated by glass** transparency, reflections, light transitions, colors, design, and **Art of production**.  
**It's a mystery** about how this extraordinary material was created, crafted, shaped, and colored, or even **decorated**.

“ WHAT IS NOW PROVED  
WAS ONCE ONLY **IMAGINED** ”

📍 Plot 8 , 9 , Block 12005 , Northern Extension  
1st. Industrial Zone , Obour City

Decorative Glass EST-1963

Decorative Glass EST.1963





## 01 ABOUT

PAGE  
06

- EST.1963
- Certificates
- Founders
- Philosophy
- Mission
- Manifesto
- Our Work
- Our Partners
- Our Platforms

## 02 WHY GLASS!

PAGE  
20

## 03 CAPABILITIES

PAGE  
24

- Mass production
- Art & Design House
- Glass Fabrication
- Printing Solutions
- Express & Installation

## 04 GLASS TECHNIQUES

PAGE  
54

- Raw Glass
- Laminated Glass
- Coated Resin
- Frosted Glass
- Curved Glass
- UV Printing
- Ceramic INK
- Laser Printing
- Custom Mirrors
- Mixed Techniques
- DG Crystal Collection
- Steel & Glass

## 05 GLASS SYSTEMS

PAGE  
142

- Horizontal Sliding Glass Walls
- Folding Glazing System
- Vertiflex Automatic Glazing System

## 06 GLASS APPLICATIONS

PAGE  
154

- Facades
- Hand Rails & Stairs
- Display Cases
- Partitions
- Cladding
- Glass Marker Board
- Glass Hood
- Doors
- Mirrors
- Glass Blocks
- Showers Cabinets
- Sky Light
- Pergolas

## 07 PROJECTS

PAGE  
230

- Residential
- Commercial
- Office

## 08 COLLECTIONS

PAGE  
258

- Furniture & Fit's
- Home Accessories
- Lighting Solutions
- Wall Art Frames
- Artworks

## 09 WHAT OTHERS SAY ABOUT US!

PAGE  
292



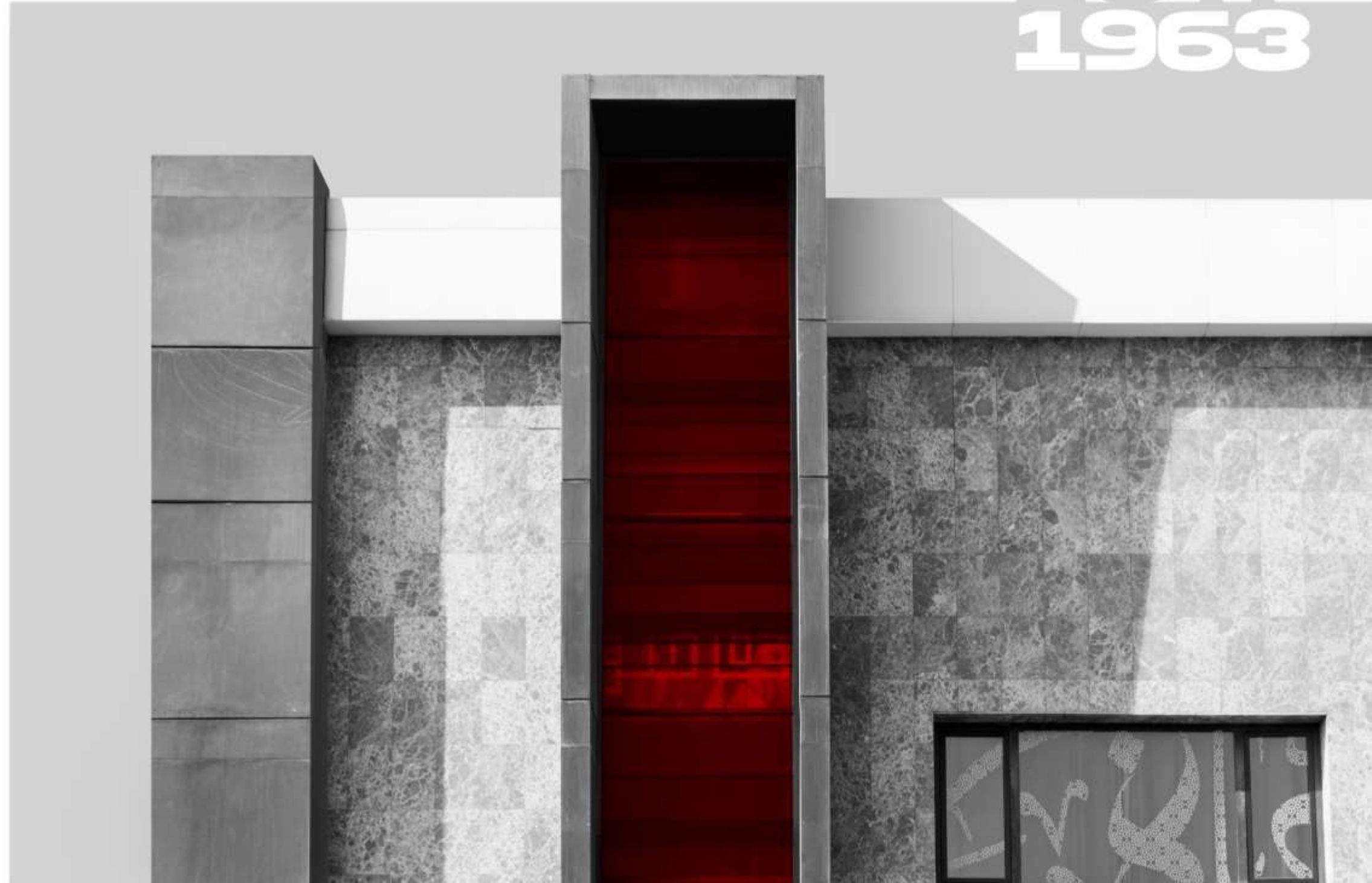
EST.  
1963

# Brief

The Egyptian Decorative Glass Brand Made a **quality development move** in the fabricated glass field while combined it with the latest **exterior and interior design trends**. In 1963, it intended to **change the world** to unite clients and **glass innovation culture** to pursue that **aim**.

Our means to achieve this are our **passion, initiatives, and tactics** centered around product development and **operational excellence**.

# Certificates





## Tarek El genedy

“ We are always eager to have the latest tech in the glass industry, maintain and expand our market share in glass creation. In addition to the knowledge and historical experiences, We inspire others and exceed clients expectations. ”



## Tarek Bahr

“ As a glass Developer, I will say it loudly. Our aim focused on adding new meanings to functional and decoration by our continuous innovation process while fabricating glass.

These extraordinary material characteristics reflect us! ”



## Mohamed El genedy

“ For me, it was a dream. I was blissful seeing it transforming into a real truth and enjoying taking every step forward in reaching Customer' expectations by assembling every block on the other to build the reality of the Decorative Glass Brand. ”







## Philosophy

Our **philosophy's primary part** is to spread the passion for this extraordinary material by delivering exceptional productions to be the ultimate **glass advisor** of our clients' choices by growing a long-term **trust connection**.



## Mission

Inspire the global market, Through initiatives centered around **manufacturing evolution**, **industrial superiority**, **trend strategies**, and **brand communications** pursued from the client's perspective, anticipating changes in society and the markets in which we operate.



# Manifesto

## 01 Innovation

Being always excited about **research and experimentation** leads us to execute **creative efficiency and quality** into our projects as an accurate response to our **clients' expectations**.

## 02 Customization

From **design to production, supply, and even application**, we offer a wide range of **design solutions** customized to fit various needs.  
Also, our diverse **glass techniques** give any design **a masterpiece edge**.

## 03 Authenticity

Inspired by antique glass techniques, **artistic-cultural heritage** of inestimable value we have inherited then **reinterpreted** it in new solution, willing to make it **NOW a lead!**

## 04 Human

Our **organizational and production team's** constant efforts and professionalism have **combined significantly** to our reputation. Involving the **right characters** for the right job, united with a devoted team spirit, has established an **excellent success**.

## 05 Safety

We are **accountable** for our **operator's** safety and the **safe distribution and installation** of our glass production to our clients.

## 06 Eco-responsibility

Glass is an **edgy, sustainable, safe energy**, fully recyclable material that provides **excellent** environmental benefits.



# Explore our work at

[www.decorativeglasseg.com](http://www.decorativeglasseg.com)



# Our Partners



We achieved a **significant revolution** by staying close to the partners and clients through our production factories throughout **Egypt and global exporting.**



### Cairo Branch

-  +2 01206333387
-  +2 01003111178
-  Info@decorativeglasseg.com
-  Plot 8 , 9 , Block 12005 , Northern Extension 1st. Industrial Zone , Obour City.

### Alharam Branch

-  01110054997
-  Alharam@decorativeglasseg.com
-  The new 15th Street, off Mansheyet Al-Bakary Street, Al-Sa'a Square, Talbia Faisal.

### Assuit Branch

-  01119045474
-  Assiut@decorativeglasseg.com
-  Assiut Abnoub Road - Bani Morr, Al Fath Center, in front of the Saudi Company Towers.

### Kafr El Sheikh Branch

-  01159299552
-  Kafrelsheikh@decorativeglasseg.com
-  16 Ali Ebn Abi Taleb Street, El Atiba' District, Kafr el sheikh.

### Alexandria Branch

-  01110603190
-  Alex@decorativeglasseg.com
-  Al-Asafra West No 26, Street 23 off 45 Street, Next to Oqba Bin Nafie Hospital.

### Ismailia Branch

-  01155500233
-  Ismailia@decorativeglasseg.com
-  Behind the Equestrian Club in front of Cars Market – Ismailia.

### Minya Branch

-  01013730989
-  Minia@decorativeglasseg.com
-  39 Safwah tower from Al-Sbaie Street, Shalabi district, next to the Agricultural School And opposite Car Tech Company.

### Tanta Branch

-  01147200226
-  Tanta@decorativeglasseg.com
-  Ahmed Kamel Street, Off Mostafa Kamel Street, Tanta.

### Smoha Branch

-  01011002699
-  Smoha@decorativeglasseg.com
-  Rab'a Al-Nasriya, Batal Al-Salam Street, Next to Mitsubishi, AL Salam 3 Towers.

### Alagamy Branch

-  01019829325
-  Agami@decorativeglasseg.com
-  Kilo 19.5 Alexandria Matrouh Road, Goweda Jumah Mofteh Street, In front of Abu Hajjaj Restaurant.

### Zakazeq Branch

-  01117880268
-  zakazeq@decorativeglasseg.com
-  Al-Wataniah Al-Quds Street, off Al-Ghasham Street, next to Salah Salem Hospital.

### Digital Platforms

-  decorativeglassdgeg
-  decorative.glass
-  DecorativeGlass
-  DecorativeGlass
-  DecorativeGlass
-  DecorativeGlass
-  DecorativeGlass
-  www.decorativeglasseg.com

“ SIMPLICITY IS THE KEY ”

# WHY GLASS!



## Transparency

Due to molecule decrystallization.



## Privacy

With transparency and light transmission.



## PVB Noise reduction

Acoustic interlayers Dampening, weakening the sound as it travels through the glass.



## Laminated Glass

The Interlayer can hold the glass in place when broken.



## Tempered Glass

Approximately four (4) times more potent than annealed glass.



## Fire-rated glass

Offers protection ability to stand or confine a fire for a pre-determined amount of time.



## Bullet-resistant glass

Is a polycarbonate interlayer material that absorbs the energy of a bullet.



## One-way mirror

An effective means of providing undetected surveillance and high quality one-way vision.





### Anti-fog glass

A plausible anti-fog is used on the glazing's outer pane to prevent condensation issues.



### The anti-reflective

Minimizes glare and reduces light reflection to  $\leq 1\%$ , where a high degree of transparency and minimal reflection are required.



### Self-cleaning Glass

This is a revolutionary coating self-cleaning range of glass. It stays cleaner, all-year-round. Its unique dual-action layer gives the practical benefit of less cleaning and more transparent, better-looking glass.



### Glass solar energy

Renewable energy source for facade with limitless aesthetic possibilities.



### Low E Glass

reflective glass that appears to be transparent while reflecting heat to its source. It reduces heat while providing maximum light transmittance.



### Leadlight Glass

Are decorative glass that could be clear or colored, plain, textured, beveled, or etched - Traditionally seen in heritage houses, they come in various patterns or motifs that help to obstruct views in-home or space.



### Glass With LED

This is an innovative and unique concept of communicating a facade with LED-embedded glass. Full glass transparency combined to optimize light communication day and night.



### Magic Mirror

TV mirrors function is when the TV is OFF. It serves as the backing to the mirror. If it is ON, this mirror instantly becomes invisible, and your TV's image shines through.



### IG Glass Unit

it's an effective solution to conserve energy and comply with construction codes to reduce air-to-air heat transfer into urban architecture design.

WHY GLASS!



# Capabilities

**Explore DG** Glass Tempering, curving, custom off cutting, UV bonding  
Edge treatment and polishing, Drilling, Digital measuring Lamintaid, Painted, Printed, Laser, PVD Polishing, and more, let's get **wonder & lost** at decorative glass.

All of which are performed by the most qualified people and most up-to-date machinery ensure that each piece of glass we produce turns out safe and beautifully created.

“YOUR GLASS ADVISOR”



# Mass production

we processes and distributes  
**3000 M<sup>2</sup>** per day



# Art & Design house

W H E N   A R T   M E E T S  
P R O D U C T I O N



# Create extraordinary projects

## ARCHITECTS & DESIGNERS

Architects, Designers, Artists, and business decision-makers **know and value how to customize fabricated glass** will elevate their overall **designs and projects**.

## SERVICE EXPERIENCE

Is **developed on communication** with our clients at the **focus of our decisions and operations**, while **Glass & PVD Steel installations** process.

## TREND REPORTS AND DESIGNS

**Combined with the most advanced technology** collaborate with notable designers, realizing their imaginative talent come true. **Sophistication, originality** are the salient features of all **Decorative Glass products** that are equally adhered to Exterior projects, in-home, office, commercial, and hospitality.



“  
DESIGN IS WHERE  
SCIENCE AND ART  
BREAK EVEN.  
Robin Mathew  
”

# Glass Fabrication





## Tempering Flat Safety Glass

### SPECIFICATION

- It is cooled, "**heat-treated**", exposed to high-speed heat.
- Securit is made for all glass thicknesses **from 4 mm to 19 mm**.
- The **smallest** size of Securit is 30 x 30, and the **largest** is 2.44 x 5mm.
- **High safety** factor as it **breaks into small pieces** of regular glass.



## Curved Safety Glass "heat treated"

Has a **curved surface** with a **specific radius**. The minimum length side to curve is 800 mm, Furnace length 3660 mm, min radius 1.5 m.

**Available in thicknesses: from 4 mm to 19 mm**



## Laminated safety glass

The most **innovative line** in the Middle East can implement a block measuring 6 m in height and 244 m in width. Global quality specs can also make a **curved laminate** and **implement bulletproof glass**, **acoustic glass**.





## Custom cutting

### AUTOMATED CUTTING TABLES:

A production line automatically cuts glass once the glass sheets are added with **specific pressure**, depending on the **glass's thickness**.

### CNC machine :

computer-controlled glass cutting machine, deliver extremely accurate glass requirements.

### Water-jetting :

This system deploys the power of highly pressurized water to cut glass.

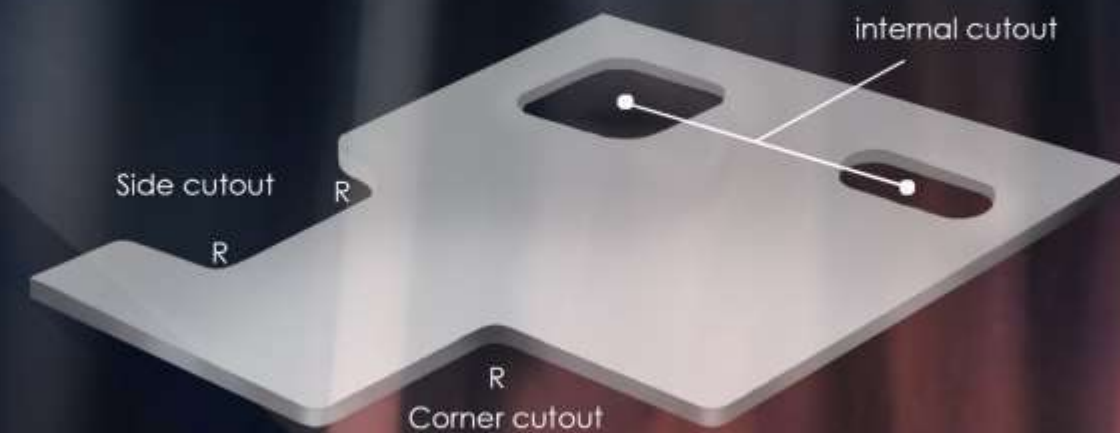
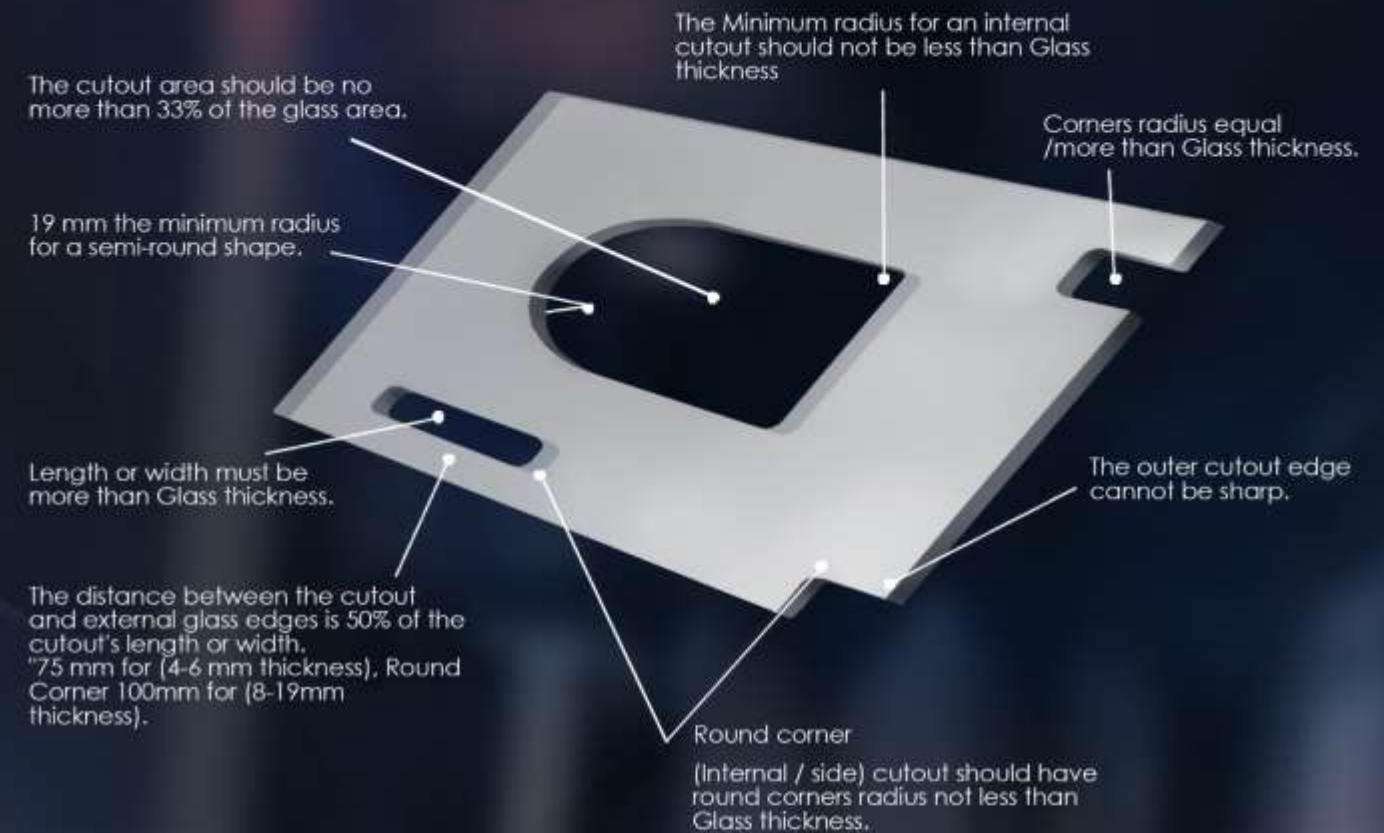
## 🔪 Cut off types

### Most experienced glass professionals

recognize that glass **cannot be cut** after it's tempered, so it must be **shaped** accurately in the beginning.

### Specification

- Non-polished cutout available at 33% tallest of glass width.
- Polished cutout available at 33% tallest of glass width.







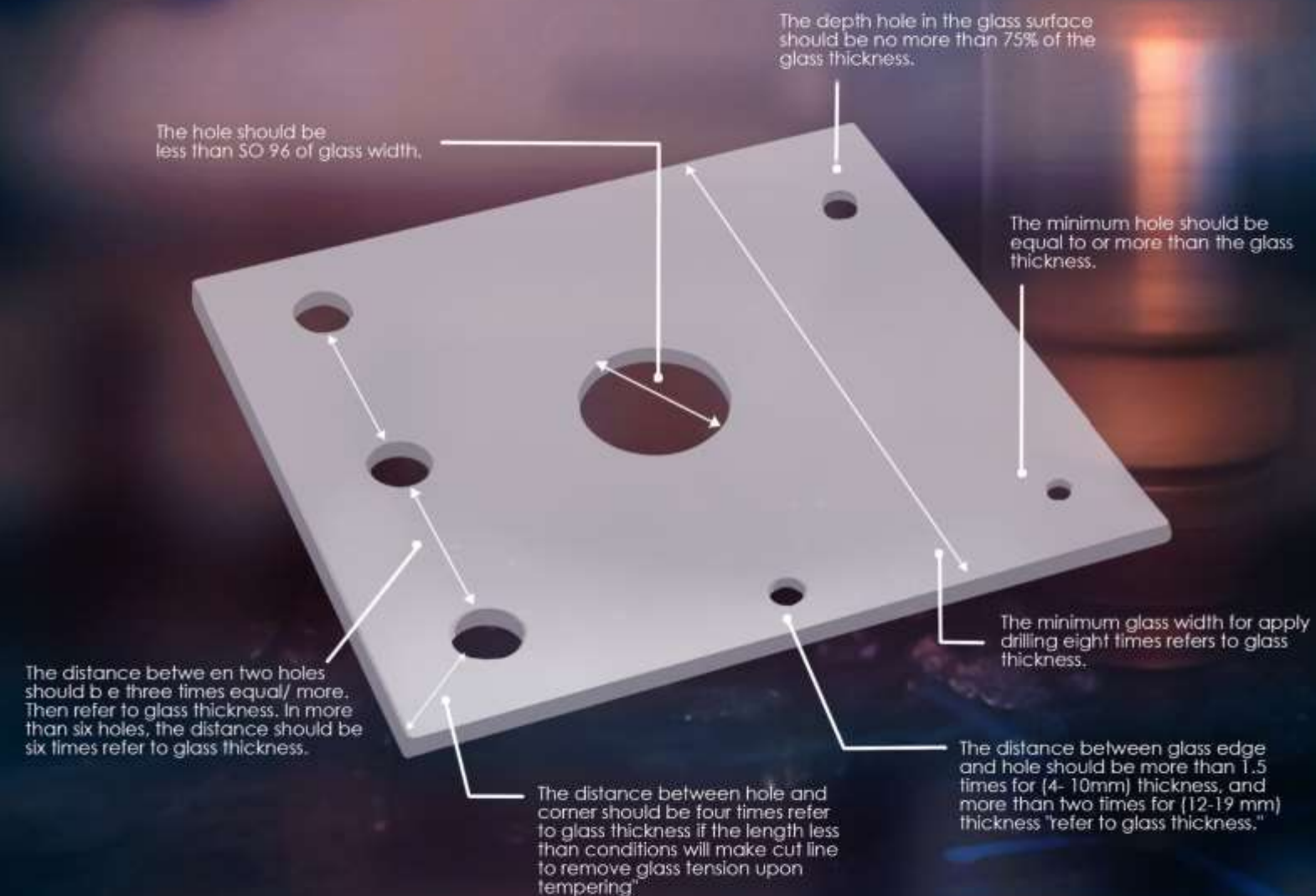
## Hole Drilling

Our Italian machines drill specific holes on **both surfaces of each piece of glass.**

**Diamond-impregnated** development drills use laser technology to create a **perfect finish** in each hole.

### Specification

- None polished holes available from 6 mm to 70 mm.
- Polished holes available from 100 mm up to 50 % from glass width.
- The factory applies extra-cost if the client insist to his own requirements.





**Edge  
treatment  
and polishing**

TYPES :



BEVEL



JULIA



ANGLE 22° - 45°



TRIBLE



FLAT



PENCIL

“ YOUR GLASS ADVISOR ”



## UV Bonding

It conveys that one piece of glass is **perfectly bonded together**.

We provide **UV-solutions** for retail environments, airports, offices, and other projects.

We deliver constructed glass cases that are **custom-sized to meet specifications**.

## Digital Accuracy for measuring Flat or Curved Glass

This technology allows our operators to smoothly create, check and change accurate digital measurements in the job site and use the immediately created files for further processing or direct input for our machinery.



# Printing solutions

## UV Printing

This beautiful technology uses the **ultra-violet LED lights** technique to dry **organic color ink**. It is printed and distributed the ink on a material's surface instantly for a **stunning interior look and feel**.

### Specification

- UV Glass printed available at 2440 x 5000 mm.
- Print thickness from 1.5 mm up to 200 mm.
- It can print **flat or Relief** until 15 mm thickness.
- Available in both **float and Tempered** Glass.
- UV printer has a unique property that can print at any material!

## Ceramic INK

Our ultimate Ceramic **thermal color** digital print is an **up-to-date** glass technology using Nano frit **ink**, increasing **print durability** and **Light transmittance**.

### Main uses:

Exterior Projects curtain wall, double glass, cladding, partitions, shower cabinet, glass advertising signs, building façade, decoration, handrails, ceiling, etc.

- The color composition and the curing processing gains properties such as chemically resistant, durable, and scratch-resistant, thermal resistance up to 500°C.
- Grantee about **30 years** for anti-weathering or changing color.



## PVD Stainless Steel

Our **true luxury stainless steel** called **PVD** finish is beautiful and enduring, used to manufacture many furniture and other **interior decor items**.

THE THIN COATINGS ARE BETWEEN 0.5 MICRONS TO 5 MICRONS, DEPENDING ON THE COLOR AND REQUIRED PROCESS.

## Why PVD !

- Richly unique varied Design
- Eco-friendly with no use of chemicals
- Lower maintenance cost
- Essential corrosion resistance and excellent hardness
- High-quality service finish
- Significant increase in surface life

YOUR STAINLESS STEEL DESERVES PVD.





# Express And Installation

Our qualified **glass advisors, designers, and installers** in house **will expertly execute any size of project.**

WE PROVIDE SEVERAL SOLUTIONS TO ALL YOUR DESIGN REQUIREMENTS.





“  
EVERY GREAT  
DESIGN BEGINS  
WITH AN EVEN  
BETTER STORY.  
”

## WE OPERATE INSTALLATION

fixtures, and fittings to achieve the **exclusive piece** that you had imagined.

**We always ready** for any technical advice and after sales service to ensure the longevity of your **OWN masterpiece of glass.**

# Glass techniques

Glass in its standard form is an **extraordinary material**.  
**No matter what the project** or how challenging, we will  
figure it out and make it happen with **diverse techniques!**

“YOUR GLASS ADVISOR”





## Clear

**DESCRIPTION:** Has a greenish tint as a result of the **natural presence of iron oxide**.

**THICKNESSES:** FROM 4MM TO 19 MM  
( 3 MM SPECIAL REQUEST )  
**GUIDELINE:** ASTM C 1036

## Ultra Clear

**DESCRIPTION:** A low iron base glass, ordinary clear glass has about 10X iron oxide than the ultra-clear glass, which gives **an exceptional viewing and avoid color distortion**.

**THICKNESSES:** 4MM TO 6MM - 10 MM  
- 19MM OR SPECIAL REQUEST  
**GUIDELINE:** ASTM C 1036



# Raw glass

## Tinted

**DESCRIPTION:** Treated to produce a tint to the glass to protect the space from **harmful solar effect** in addition to its **semi-transparent effect**.

**THICKNESSES:** 4MM - 6MM - 8MM - 10 MM OR SPECIAL REQUEST  
**GUIDELINE:** ASTM C 1036



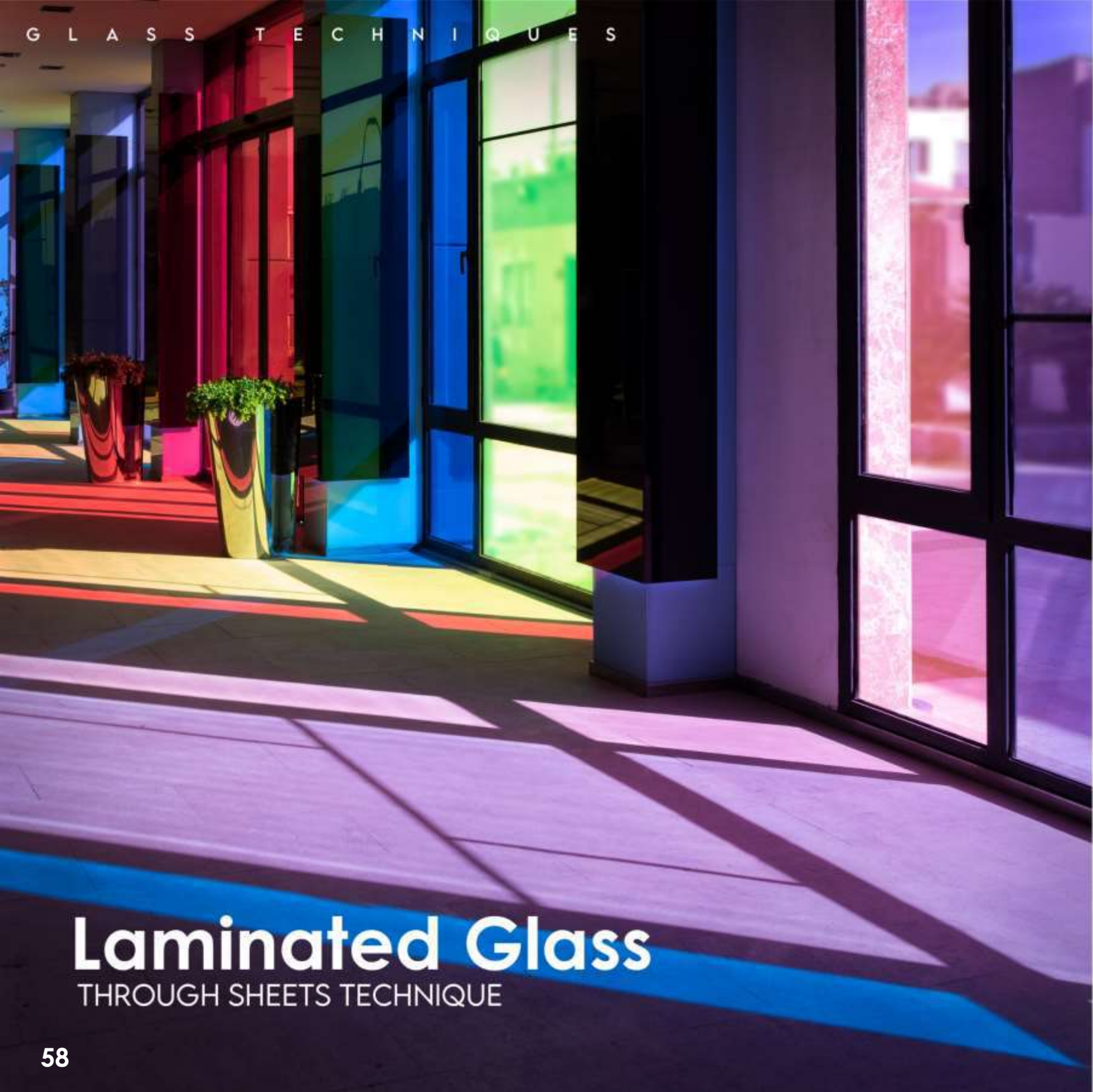
## Reflective

**DESCRIPTION:** This type is **coated with a metallic oxide on one side** to give **protection from the solar rays and privacy** in addition to a **glazed look** in the **exteriors**.

**THICKNESSES:** 6MM OR SPECIAL REQUEST  
**GUIDELINE:** ASTM C 1036







# Laminated Glass

THROUGH SHEETS TECHNIQUE

## Laminated Glass

includes various **transparent and opaque tints**, which gives the **interior and exterior designs** a unique, vibrant look. Also, it consists of two layers of glass and a third interlayer, which makes it **the most safe and durable type of glass**.

## Colored Outdoor

TRANSPARENT PLASTIC

**THICKNESSES:** 4MM/4MM TO 19/19 MM- SPECIAL REQUEST  
**GUIDELINE:** ASTM C 1172



VIOLET BLUE  
HC-PLASTIC-L



PINK  
HC-PLASTIC-BI



BLUE  
HC-PLASTIC-AK



RED  
HC-PLASTIC-BX



LEMON YELLOW  
HC-PLASTIC-BK



DARK PURPLE  
HC-PLASTIC-CK



DARK GREEN  
HC-PLASTIC-CH



ORANGE  
HC-PLASTIC-G

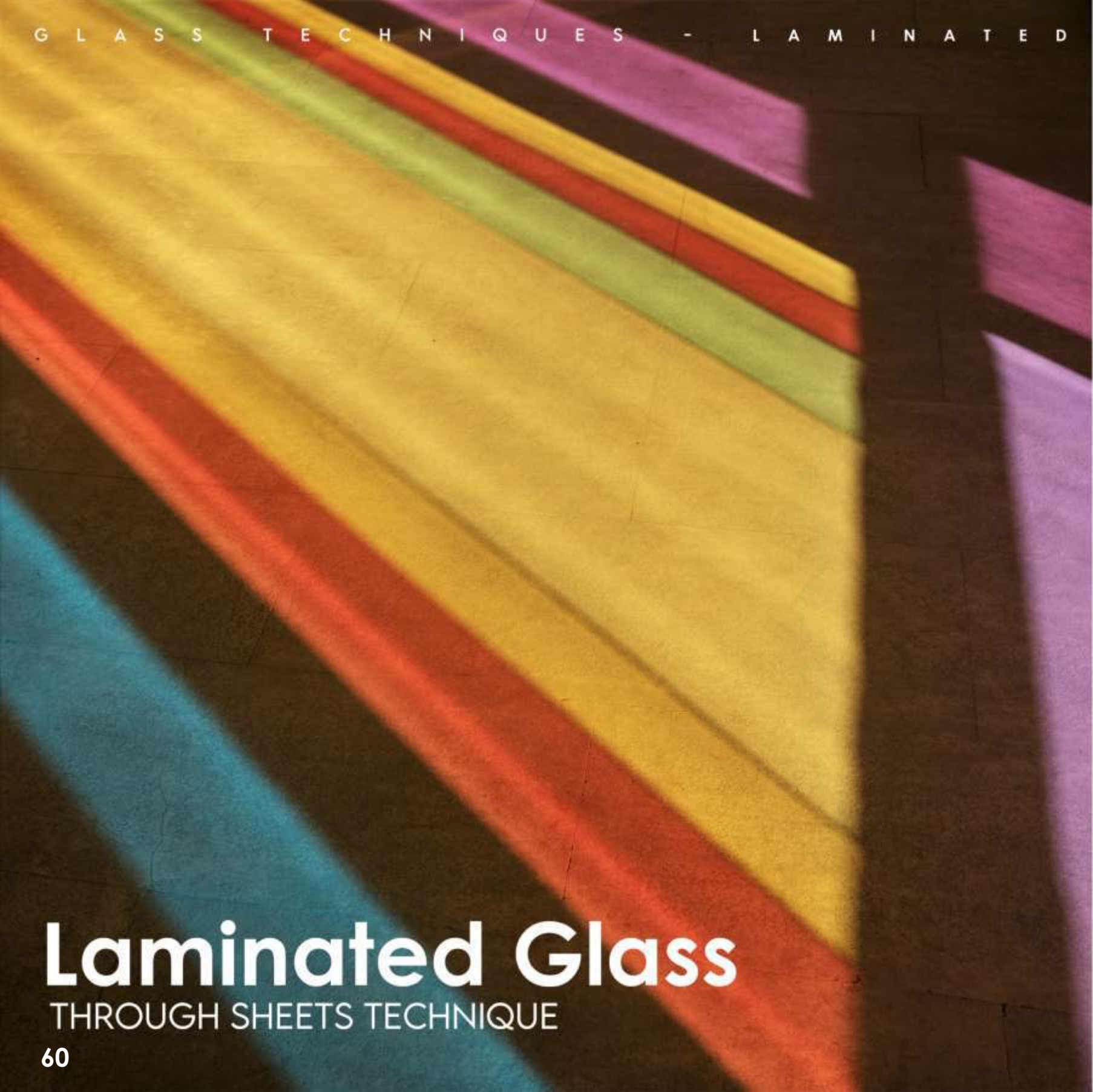


GRASS GREEN  
HC-PLASTIC-BZ



LIGHT BLUE  
HC-PLASTIC-O





# Laminated Glass

THROUGH SHEETS TECHNIQUE

## Colored Indoor

TRANSPARENT

**THICKNESSES:** 4MM/4MM TO 19/19 MM- SPECIAL REQUEST

**GUIDELINE:** ASTM C 1172



RED  
HC -K11



BLUE  
HC -K14



GREEN  
HC -K6



LEMON  
HC -K4



PURPLE  
HC -K12



VIOLET BLUE  
HC -K19



ORANGE  
HC -K5



PINK  
HC -K10



# Laminated Glass

THROUGH SHEETS TECHNIQUE

## Colored indoor

OPAQUE

**THICKNESSES:** 4MM/4MM TO 19/19 MM- SPECIAL REQUEST

**GUIDELINE:** ASTM C 1172



RED  
HC-K35



BRIGHT YELLOW  
HC-K36



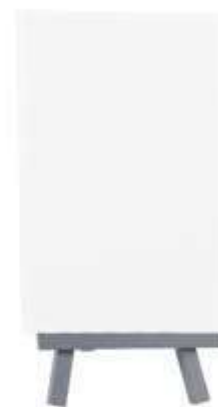
APPLE GREEN  
HC-K26



GRASS GREEN  
HC-K34



BLACK  
PJ-EVA-7



SUPPER WHITE  
K2 -1



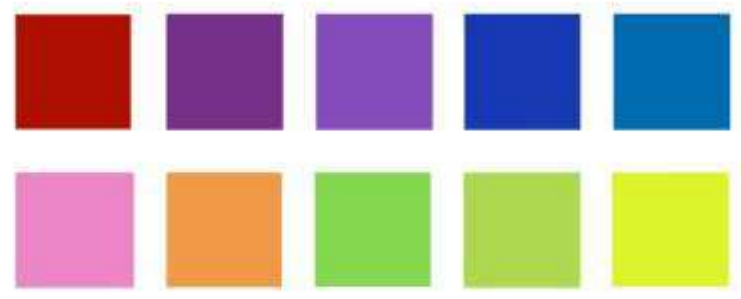
SANDED WHITE  
K7

“ LIFE IS A SEA OF VIBRANT COLOR  
JUMP IN. ”  
A.D. Posey



# Smart Glass

A smart, beautiful film that can be added to laminated glass and electrically switched from **ON** to **OFF**.



**AVAILABLE COLORS**  
**THICKNESSES:** 4MM/4MM TO 19/19 MM- SPECIAL REQUEST  
**GUIDELINE:** ASTM C 1172

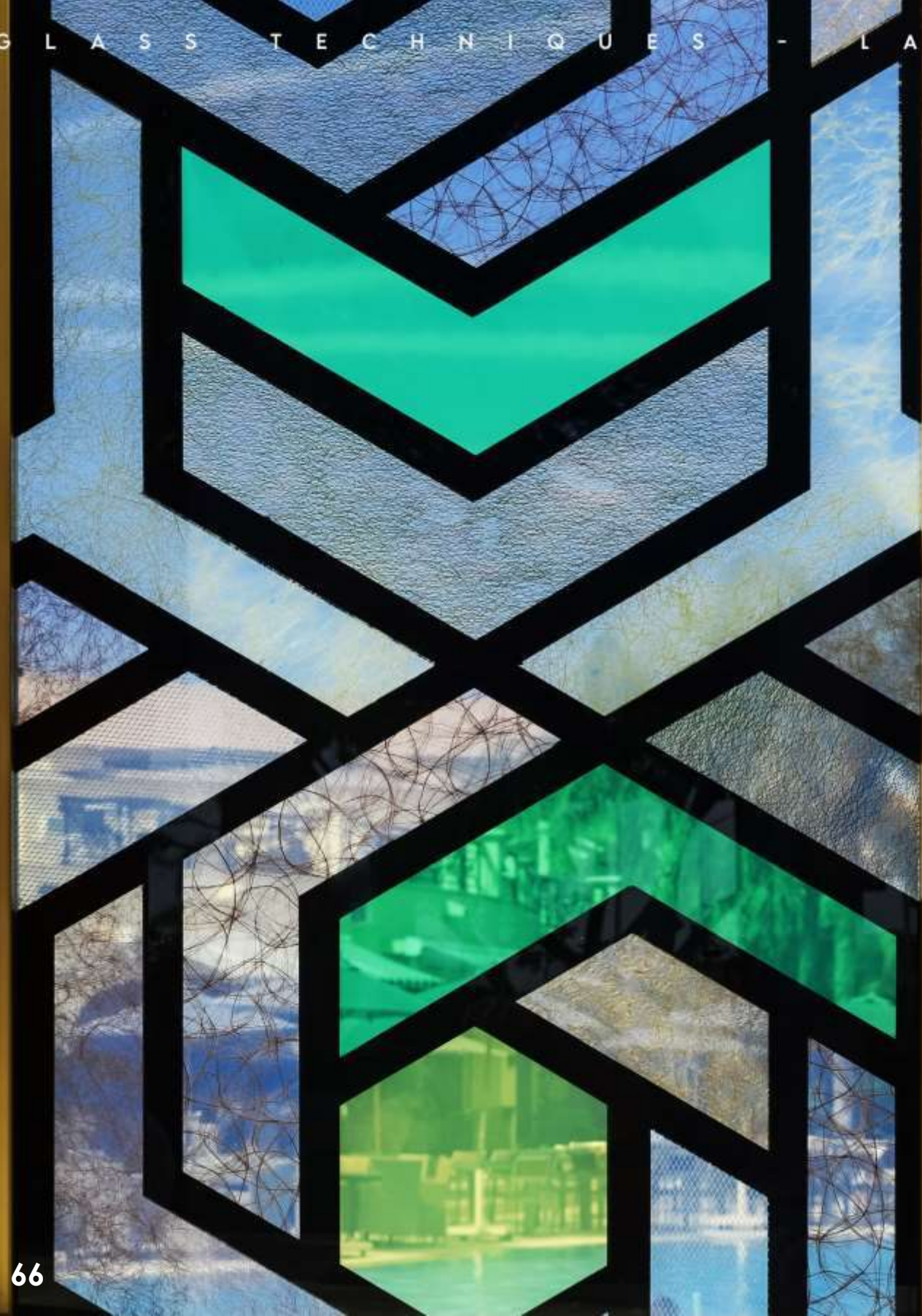


**OFF-STATE**  
(non-diffusion or transparent)

**ON STATE**  
(Light-diffusion or opaque)

All by  
Click of  
a button





# Laminated Glass

THROUGH SHEETS TECHNIQUE

## Fabrics

**DESCRIPTION:** Two layers of glass combined with the beauty of **color and texture of the fabric** give the laminated glass a **contemporary decorative feeling**.

**THICKNESSES:** 4MM/4MM TO 19/19 MM OR SPECIAL REQUEST

**GUIDELINE:** ASTM C 1172



CODES :  
HC-B03-2  
HC-FB-31  
HC-K09



CODES :  
HC-B03-2  
BJ-P03-2  
BJ-B04-2  
B04-3  
BJ-Y01-11



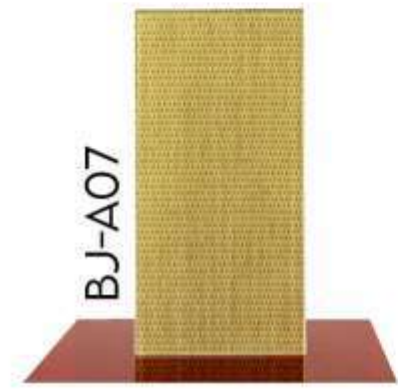
CODES :  
HC-B03-2  
HC-FB-31  
HC-K09



CODES :  
HC-P07-4  
HC-FB-31  
HC-ST3-106  
BJ-ST51-1  
BJ-A07



# Explore fabric codes







### CNC Metal LAMINATED OR MIXED

**DESCRIPTION:** CNC metal glass consists of two glass layers and a metal interlayer, which gives any space the new classic look.

**THICKNESSES:** 4MM/4MM TO 19/19 MM OR SPECIAL REQUEST ( SHEET 0.4 )

**COLORS:** ANY COLOR

**GUIDELINE:** ASTM C 1172





30  
years  
warranty



# Coated Resin

We **custom color match** using CMYK, RGB, Pantone, RAL, and almost all other generally used color chips.

**Fascinated by exceptional creativity,** we believe color can influence design, marketing, art, and more!



TRANSPARENT

OPAQUE

POWDER

# Frosted Glass

This glass style has a **frosted look** and is created by **sandblasting**, or **acid-etching**, and other techniques to create a **remarkable** surface on one side of the glass, so light is scattered and diffused.

A Special anti-fingerprint protective coating is available.

THE EFFECT BLURS IMAGES WHILE STILL ALLOWING LIGHT TO PASS THROUGH.



CERAMIC INK EFFECT



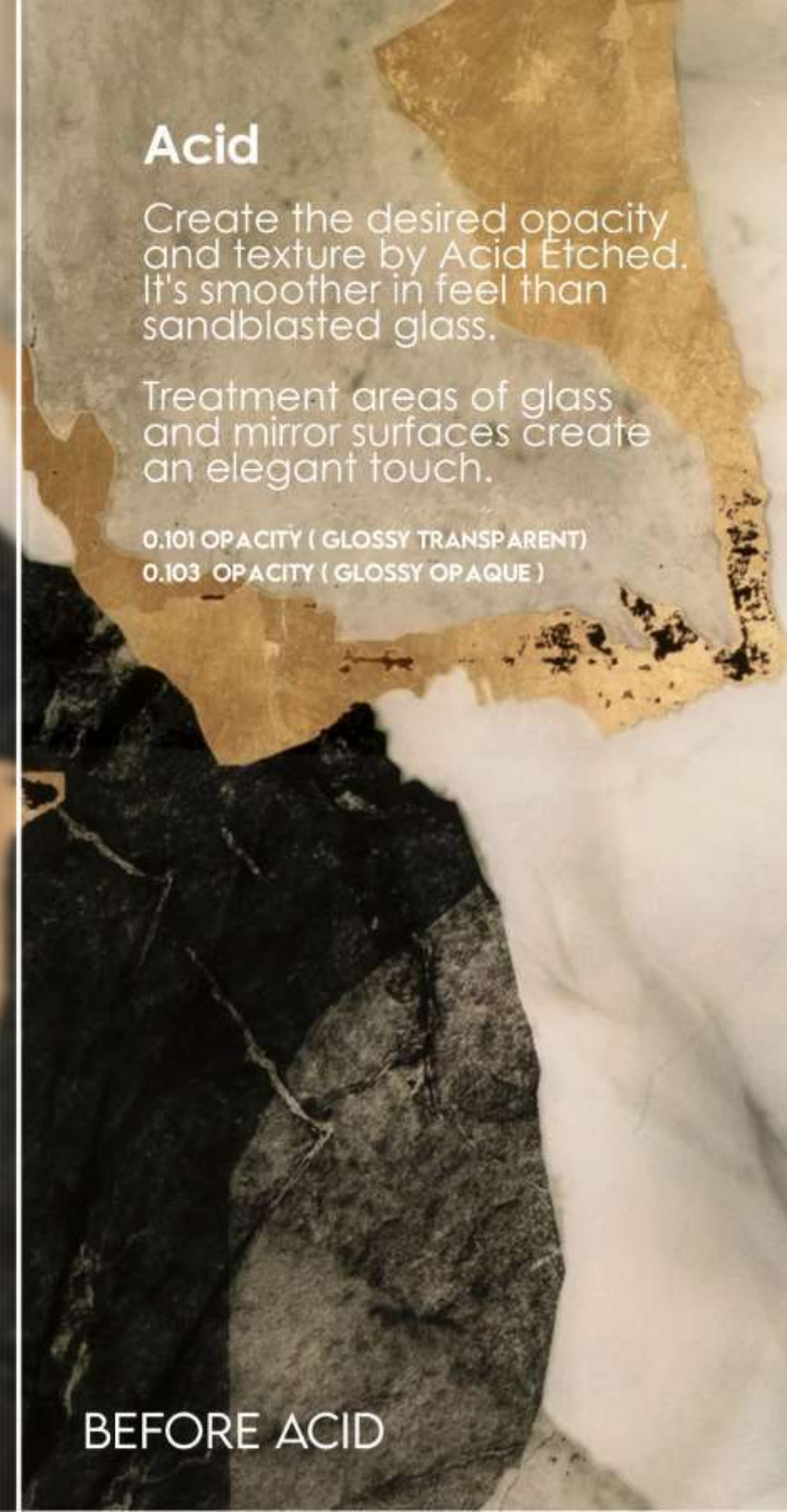
STANDARD PRADA



LAMINATED SHEET



AFTER ACID



BEFORE ACID

## Acid

Create the desired opacity and texture by Acid Etched. It's smoother in feel than sandblasted glass.

Treatment areas of glass and mirror surfaces create an elegant touch.

0.101 OPACITY ( GLOSSY TRANSPARENT )  
0.103 OPACITY ( GLOSSY OPAQUE )

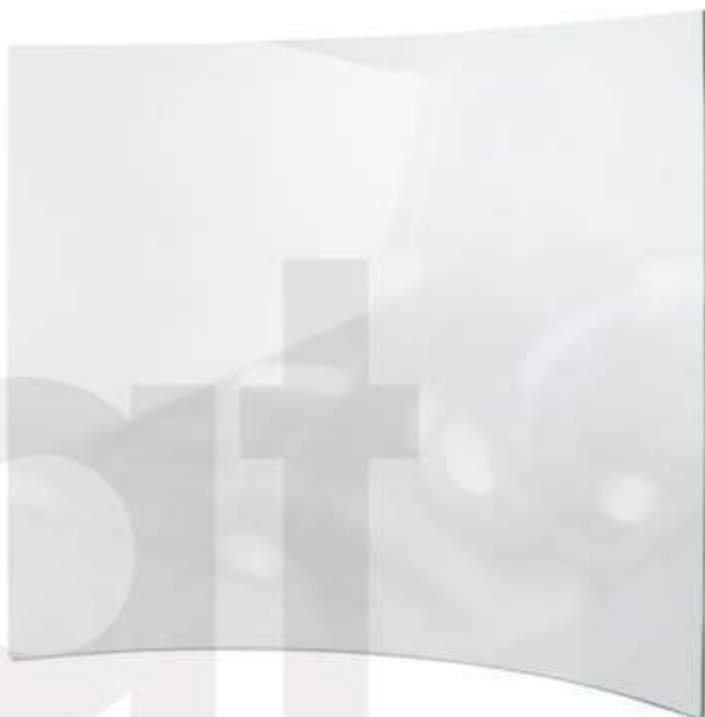


# Curved Glass

## CURVED SAFETY GLASS

Has a **curved surface** with **a specific radius**.  
The minimum length side to curve is 800 mm,  
Furnace length 3660 mm, min radius 1.5 m.

**THICKNESSES:** 4 MM TO 19 MM



CLEAR



ANTIQUÉ



CERAMIC INK

“CURVED GLASS MAY LOOKS EASY CRAFTED WHILE ITS ONE OF THE MOST CHALLENGING TECHNIQUES IN THE INDUSTRY”





# UV Printing

INDOOR SOLUTIONS

## UV Printing

This beautiful technology uses the **ultra-violet LED lights** technique to dry **organic color ink**. It is printed and distributed the ink on a material's surface instantly for a **stunning interior look and feel**.

### Specification

- UV Glass printed available at 2440 x 5000 mm.
- Print thickness from 1.5 mm up to 130 mm.
- It can print **flat or Relief** until 1 cm thickness.
- Available in both **float and Tempered** Glass.
- UV printer has a unique property that can print at any material!

### ARTWORK REQUIREMENT

- Finished, full-scale, print-ready CMYK pdf is preferred.
- Contact us for further details or to evaluate acceptable file formats.
- We will need the finalized vector file (EPS file required) for a custom Artwork or pattern.
- **Design your own!** CONTACT US

RECEIVING SAMPLES LEAD TIME ESTIMATED AT 7 BUSINESS DAYS  
**(DOESN'T INCLUDE SHIPPING OR DELIVERY)**





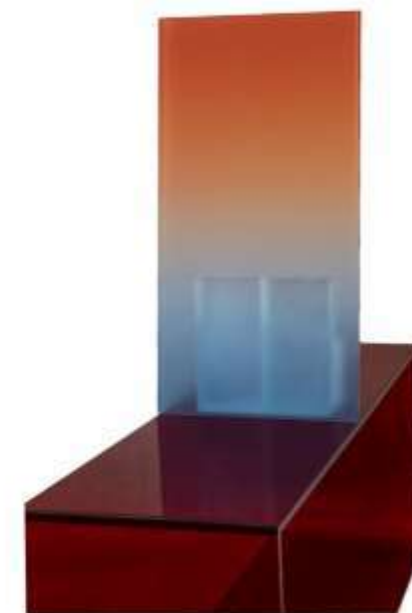
# DG Gradient

EXPLORE OUR TRENDY COLOR GRADIENTS COLLECTION THAT IS UPDATED DAILY.

Get a fresh color gradient for your next design project and release all the gradients vibes.



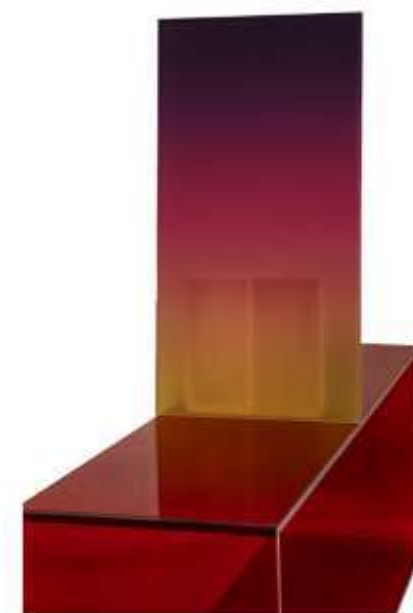
BLACK



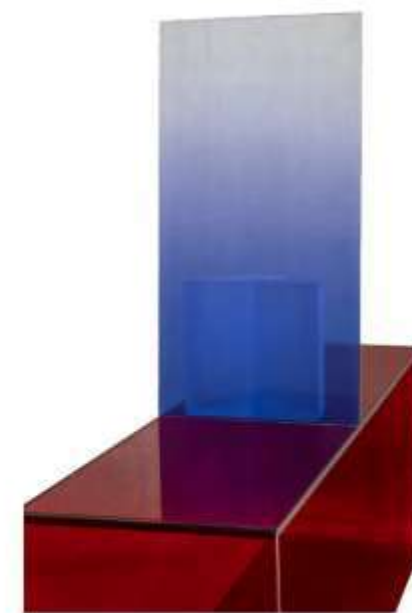
MIXED COLOR 4



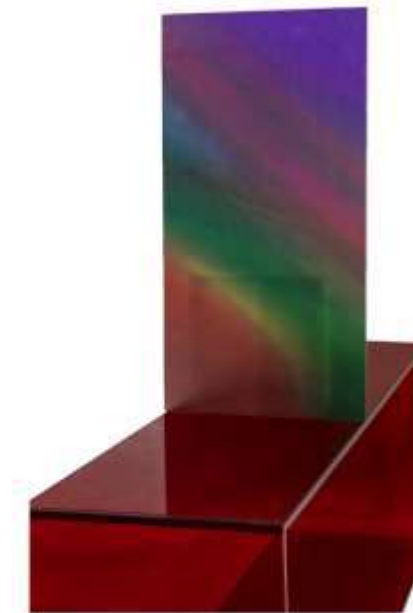
YELLOW



MIXED COLOR 3



DARK BLUE



MIXED COLOR 1



# UV Standard



P-ART 81

B & W 161

P-ART 139



COM-001



P-ART 94



B & W 53



P-ART 90



T-13



N-69





ST-139

# DG Relief

Relief printing is **raised** ink from the glass surface that you can **feel the ink's thickness** with your hand. It gives the glass a rich look.



TRA - 001



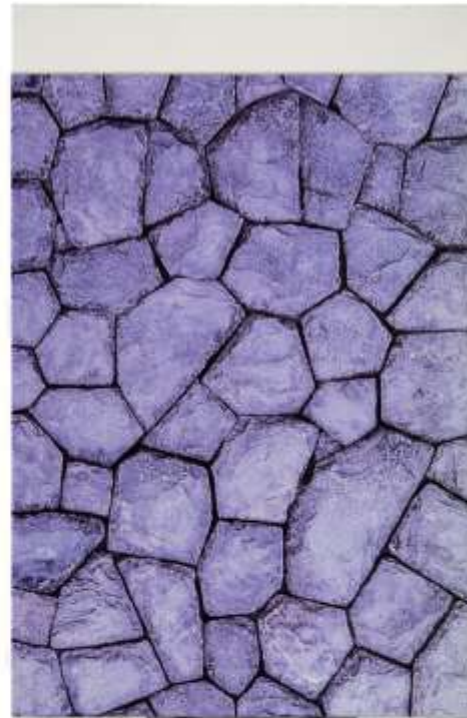
PAT - 001



ST - 140



ST - 141



ST - 142



WOOD 46



ST-8





ISLAMIC 33

# DG Mirror

One of the most challenging printing techniques, and with our latest printing techs on mirror, we have mastered it, So now we can add **artistic visions**.



UVM - 001



UVM - 002



UVM - 003



UVM - 004



FA - 26





VAR - 001



VAR - 002



VAR - 003

# DG transparent

Transparent UV printing **allows the light to pass through.** Due to the **ink's transparency,** it will enable us to print any shape, and still, you can see **through the glass.**



VAR - 004





# Ceramic INK

OUTDOOR AND INDOOR SOLUTIONS

## Ceramic INK

Our ultimate Ceramic **thermal color** digital print is an **up-to-date** glass technology using Nano frit **ink**, increasing **print durability** and **Light transmittance**.

### Main uses:

Exterior Projects curtain wall, double glass, cladding, partitions, shower cabinet, glass advertising signs, building façade, decoration, handrails, ceiling, etc.

- The color composition and the curing processing gains properties such as chemically resistant, durable, and scratch-resistant, thermal resistance up to 500°C.
- Grantee about **30 years** for anti-weathering or changing color.

### ARTWORK REQUIREMENT

- Finished, full-scale, print-ready CMYK pdf is preferred.
- Contact us for further details or to evaluate acceptable file formats.
- We will need the finalized vector file (EPS file required) for a custom Artwork or pattern.
- Maximum width: 280 CM
- Maximum height: 370 CM
- **Design your own! CONTACT US**

RECEIVING SAMPLES LEAD TIME ESTIMATED AT 7 BUSINESS DAYS  
**(DOESN'T INCLUDE SHIPPING OR DELIVERY)**



30  
years  
waiting



CAL - 001

# Ceramic Standard



NATURE - 19

NATURE - 8



AN - 7045 G



COM-002



FA - 53

NATURE - 48





CODE: MG9045

# Marble Glass

It doesn't only compete in **pricing, time, customizations**, and effort but also as ceramic printing depends on thermal colors combine with the glass itself, which make it a **lifetime warranty**, in addition to its durability and **artwork varieties**.



CODE: MG9042



CODE: MG9058



CODE: MG9006



CODE: MG9002



CODE: MG9069



CODE: MG9040



CODE: MG9062



CODE: MG 9060





CODE: MG9057

# Onyx Glass

It doesn't only compete in **pricing, time, customizations**, and effort but also as ceramic printing depends on thermal colors combine with the glass itself, which make it a **lifetime warranty**, in addition to its durability and **artwork varieties**.



CODE: MG9015



CODE: MG9004



CODE: MG9026



CODE: MG9065



CODE: MG9013



CODE: MG9014



CODE: MG 9049



CODE: MG9030

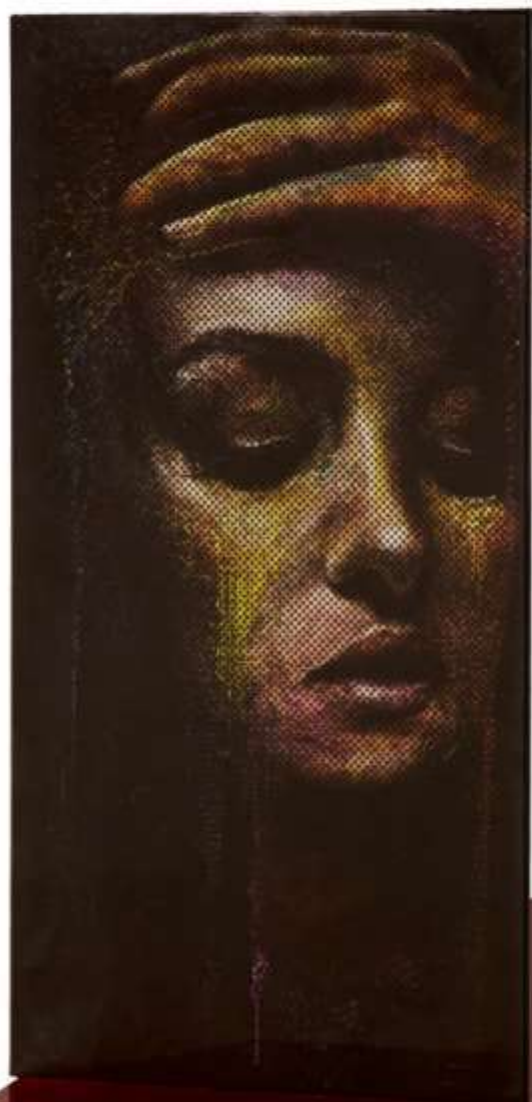


# Dots

Dots ceramic printing is **printed from one side** and the other side is dotted in **plain background**



FA - 77



FA - 53

# Double Vision

Double vision ceramic printing is the process of **printing on both glass sides**. It can be **printed in different shapes** on the interior and the exterior. Both sides are highly **durable** and a lifetime warranty.



FRONT  
VIN - 40



BACK  
FA - 78



# Laser Printing

Engraved is an art form applied to carve even the most challenging design aspects into **a glass depth** with a clean finish that shapes **a real 3D effect**.

**Extra-large / ultra-precise 2D / 3D designs** are implemented inside the plate glass to create great designs

**MAXIMUM GLASS SIZE:** (L\*W\*H) 2000\*3200\*90mm  
**THICKNESSES:** 6mm to 19 mm. Special request  
**GUIDELINE:** untempered glass only



# Laser Engraving



# Custom Mirrors

Explore our perfect **glass quality mirrors** that can add a timeless design to any space and be **customized** into any size that **fits your vision.**

“ YOU USE A GLASS MIRROR  
TO SEE YOUR FACE.  
YOU USE WORKS OF ART  
TO SEE YOUR SOUL. ”  
Bernard Shaw





WHITE

# Standard

**THICKNESSES:** 4MM - 6MM OR SPECIAL REQUEST  
**GUIDELINE:** ASTM C 1503

BLACK

BRONZE

“ TO BE TIMELESS YOU HAVE TO THINK REALLY FAR INTO THE FUTURE, NOT NEXT YEAR, NOT IN TWO YEARS BUT IN 20 YEARS MINIMUM. ”  
Philippe Starck



# Colored

**THICKNESSES:** 6MM OR SPECIAL REQUEST  
**GUIDELINE:** ASTM C 1503



BLUE



RED



PINK



GREY

# Laminated

Essentially two glass layers combined with a polyvinyl sheet make it 4x durable than the standard mirror.

**THICKNESSES:** 4MM/4MM TO 6MM/ 6MM  
OR SPECIAL REQUEST  
**COLORS:** LAMINATION TRANSPARENT COLOR  
**GUIDELINE:** ASTM C 1503



ORANGE  
HC-PLASTIC-G



BLUE  
HC-PLASTIC-AK





# Antique mirrors

Are divided into four main categories.

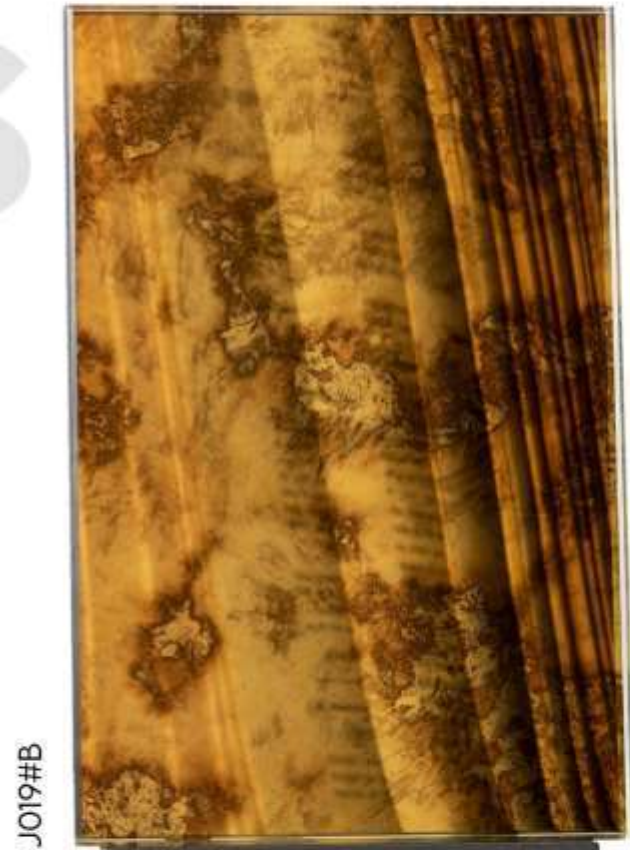
MODERN, ULTRA MODERN, CLASSIC AND VINTAGE

We are **the only source in Egypt** that manufactures antique mirrors; as antique mirrors were one of our **passions and innovations**, we now master its fabrication, combining **art and authenticity** to develop a piece of **classy artwork**.





# Explore Classic Codes



J019#B



K1 GOLD



P019



P020-9



P020-5



P019-2



A1



K2



P020-8

**THICKNESSES: 6 MM ONLY**



# Explore Modern Codes



AN70095



AN7036S



AN70095



AN7043S



AN7028S



AN7020S



AN7000P



AN7030P



AN7044G



AN7025G



AN7004P



AN7036P



AN7006P

**THICKNESSES: 6 MM ONLY**



# Explore Ultra Moderno Code



UM002F



UM004



UM028

“ TRADITIONALLY FAMOUS  
IN DESIGN & ARE RECOGNIZED  
FOR THEIR ENHANCED  
LUXURY AND EXCLUSIVITY ”



UMF001



UMC032



UMF011



UMC005

**THICKNESSES:** 4 MM TO 10 MM



# Explore vintage Codes



A-VIN 6 S



A-VIN 2 S



A-VIN 4 S



A-VIN S JACK



A-VIN 1 S



A-VIN 5 G

**THICKNESSES: 6 MM ONLY**



# Mixed Techniques

EXPLORE OUR TRENDY MIXED GLASS TECHNIQUES COLLECTION THAT IS UPDATED DAILY.





# DG Crystal Collection

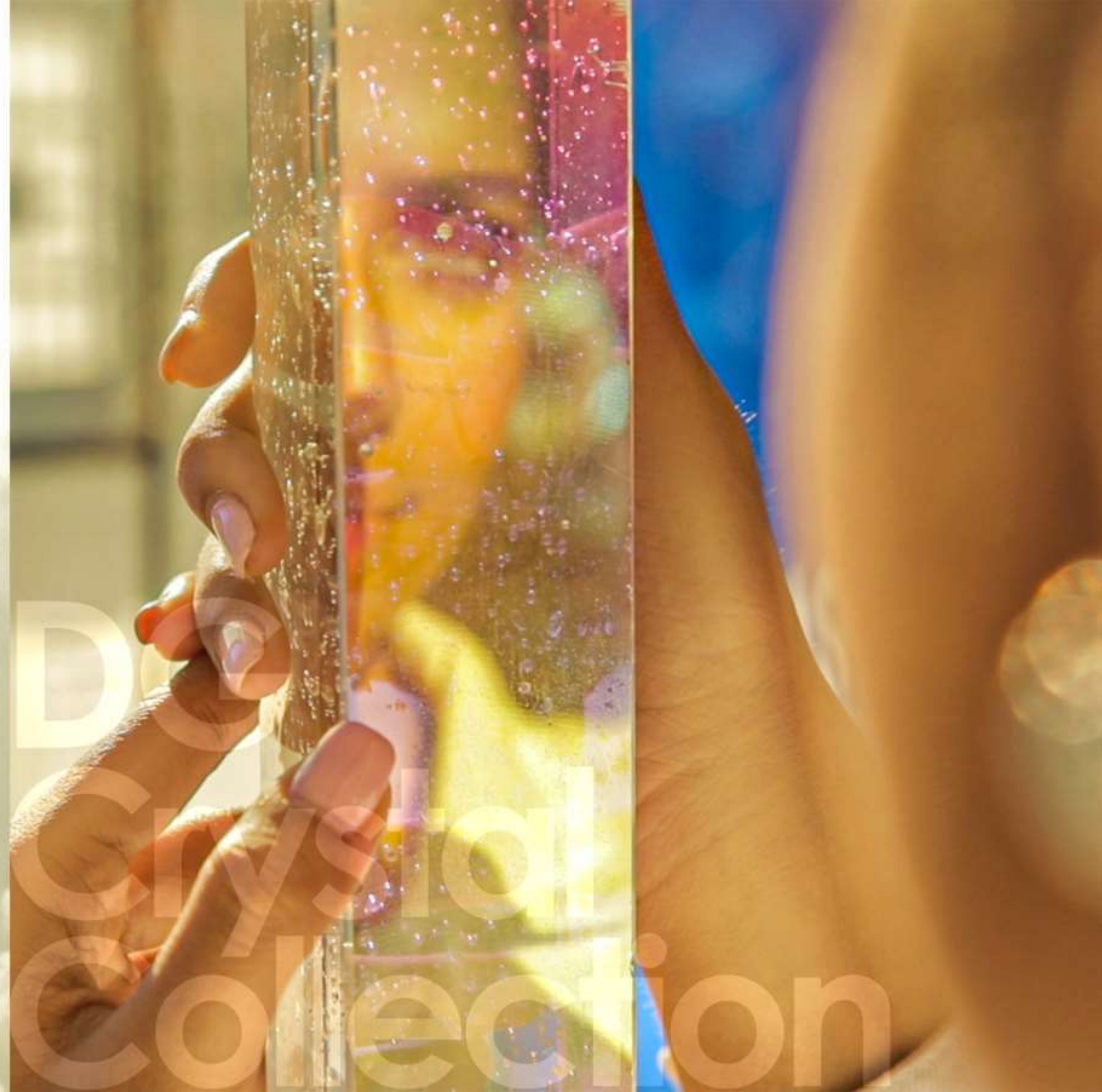
## THE OUTSTANDING COLLECTION

provides visual obscurity and transparency while admitting light.

**NOTE:** Installing with (Special Crystal adhesive)







Decorative  
Collection



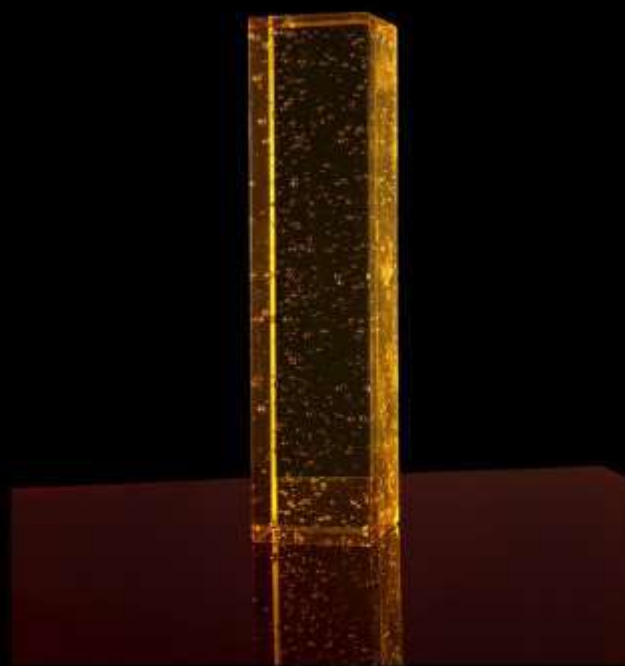
“  
EVERYTHING YOU  
CAN IMAGINE IS  
REAL.  
PABLO PICASSO ”



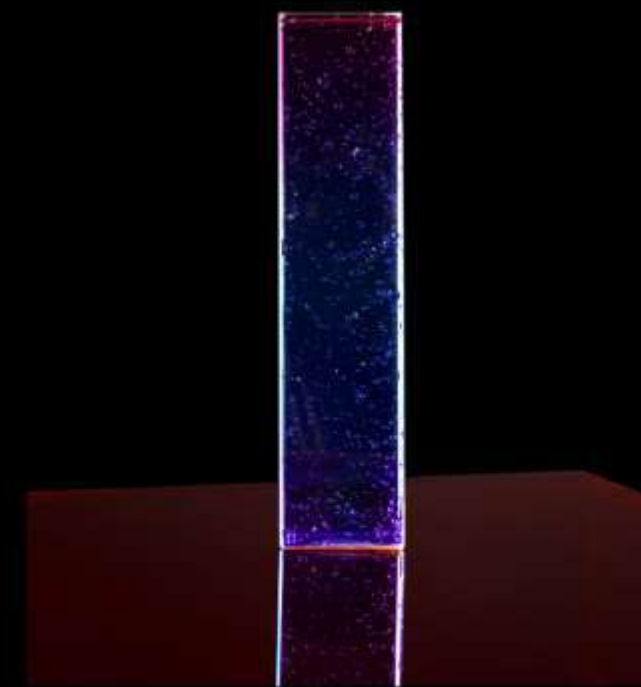
CODE: JYG-9045  
SIZE: 50 X 50 X 200 MM



CODE: JYG-9055  
SIZE: 50 X 50 X 200 MM



CODE: JYG-9057  
SIZE: 50 X 50 X 200 MM



CODE: JYG-9055  
SIZE: 50 X 50 X 200 MM

NOTE: Installing with (Special Crystal adhesive) PER ORDER REQUEST



“ **DG Crystal Collection** assists a double purpose of being both **decorative** and **operative**. With often **quite stunning light effects**, they allow **natural light** and **visual texture** to filter into a space while maintaining an element of **privacy**. ”



CODE: JYG-9003  
SIZE: 100 X 200 X 50 MM



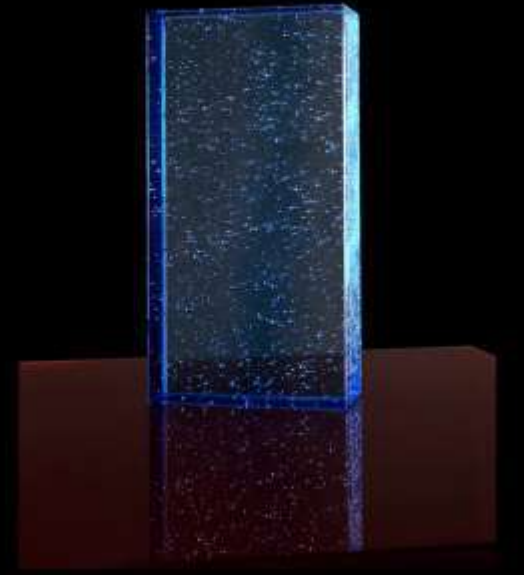
CODE: JYG-9002  
SIZE: 100 X 200 X 50 MM



CODE: JYG-9006  
SIZE: 100 X 200 X 50 MM



CODE: JYG-9004  
SIZE: 100 X 200 X 50 MM



CODE: JYG-9009  
SIZE: 100 X 200 X 50 MM



CODE: JYG-9001  
SIZE: 100 X 200 X 50 MM



CODE: JYG-9005  
SIZE: 100 X 200 X 50 MM



CODE: JYG-9010  
SIZE: 100 X 200 X 50 MM



CODE: JYG-9007  
SIZE: 100 X 200 X 50 MM

NOTE: Installing with (Special Crystal adhesive) PER ORDER REQUEST



“ It could also be **painted with any color or printed** with our techniques, which gives a stunning effect to **exterior and interior** projects. ”

# DG Crystal Collection

Textured glass designs impressed adds a decorative touch, obscuring images while allowing light to pass through.



CODE : DONG XING  
SIZES : 2000 X 2440 MM  
2000 X 2800 MM  
2000 X 3300 MM

**NOTE:** Installing with (Special Crystal adhesive) **PER ORDER REQUEST**



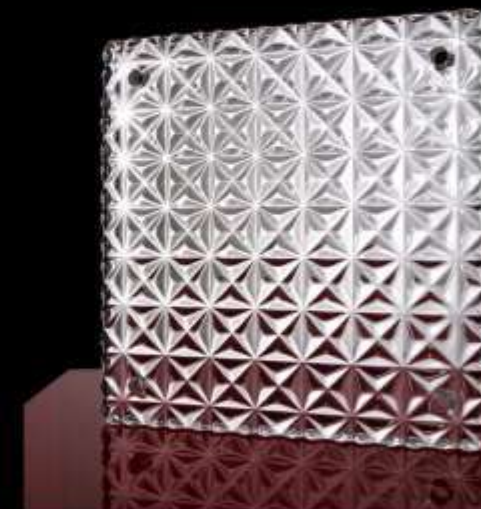
“  
DESIGN IS INTELLIGENCE MADE VISIBLE.”  
ALINA WHEELER.



CODE: JYG-021  
SIZE: 200 X 200 X 12 MM



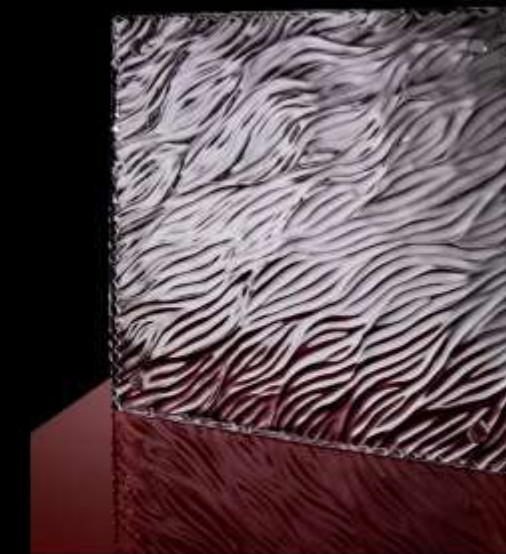
CODE: JYG-9078  
SIZE: 150 X 150 X 20 MM



CODE: JYG-028  
SIZE: 200 X 200 X 20 MM



CODE: JYG-020  
SIZE: 200 X 200 X 12 MM



CODE: JYG-029  
SIZE: 200 X 200 X 20 MM

NOTE: Installing with (Special Crystal adhesive) PER ORDER REQUEST



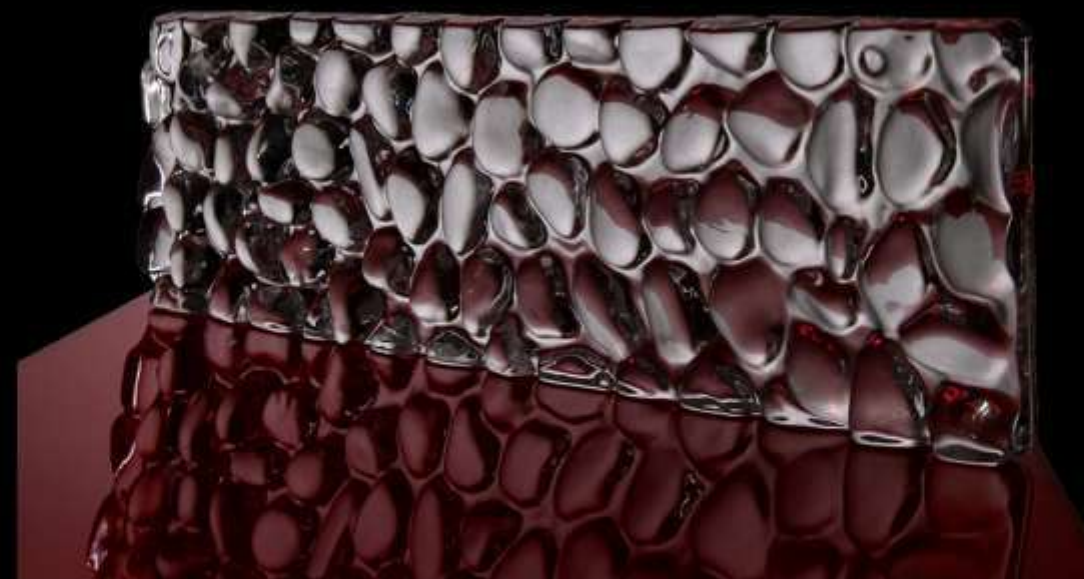
“  
CREATIVITY INVOLVES BREAKING OUT  
OF EXPECTED PATTERNS IN ORDER TO  
LOOK AT THINGS IN A DIFFERENT WAY.”  
Edward de Bono.



CODE: JYG-041  
SIZE: 210 X 100 X 12MM



CODE: JYG-016  
SIZE: 210 X 100 X 12MM



CODE: JYG-042  
SIZE: 210 X 100 X 12MM



“ **FURTHERMORE**, due to their thickness, they reduce noise, insulate against heat and cold, and save energy. ”

# Crystal Tubes



CODE: JYG-043  
SIZE: 100 CM



CODE: JYG-044  
SIZE: 100 CM





# Steel & Glass Products

ARE A STUNNING MATERIAL COMBINATION  
FOR CONTEMPORARY DESIGN SOLUTIONS.



“ A DESIGNER HAS DUTY  
TO CREATE TIMELESS  
DESIGN. ”





# Explore Steel and Glass Products





# Glass Systems

MOVABLE GLASS WALLS

Minimal designs of **vertical and horizontal** profiles

“YOUR GLASS ADVISOR”





“ DESIGN IS IN EVERY THING WE MAKE,  
BUT IT'S ALSO BETWEEN THOSE  
THINGS. IT'S A MIX OF CRAFT, SCIENCE,  
STORYTELLING, PROPAGANDA, AND  
PHILOSOPHY. ”

Erik Adigard





# Horizontal Sliding Glass Wall

## Atrium

### HOW IT WORKS

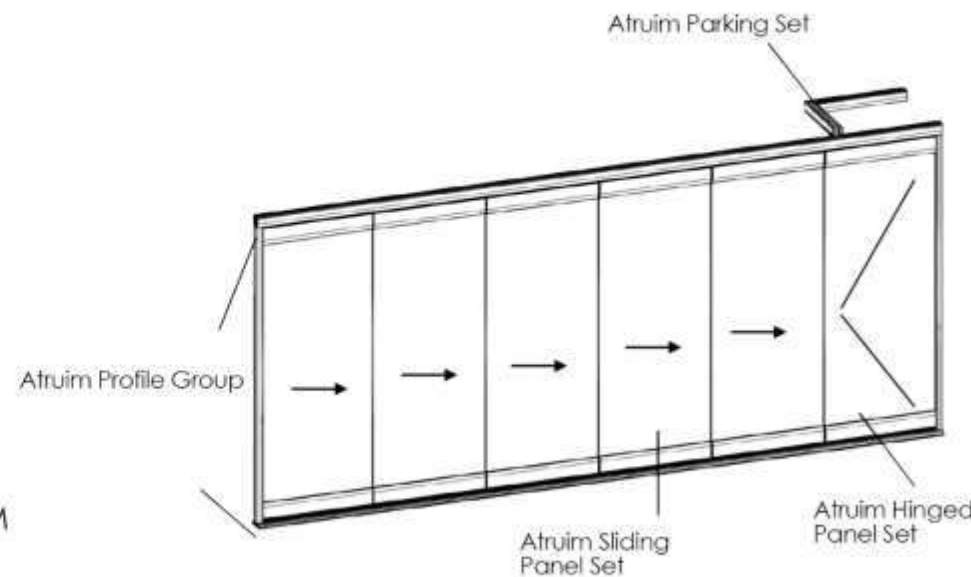
**Attractive** and **adaptable solution** with Horizontal Sliding Glass Wall System connected to the rail profile only by two roller and each panel moves separately.

The panels are easy to **adjust, align, and operate** wherever you need a **flexible solution** to keep your space free when it is opened up, **safe,** and **visible** while it is closed.

### System components

- Rail profile
- Panel profile
- Side profile
- Hinged panel set
- Sliding panel set
- Parking Area
- Glass 10 MM

**MAXIMUM WIDTH: 6 - 12 M**  
**MAXIMUM HEIGHT: 300 CM**  
**MAXIMUM WIDTH PER PANEL: 90 CM**





# Momentum Normal & HD

Is **Synchronized Folding System**.

Panels connected to rail profile only by one roller. And folding occurs by hinges and rollers together. Also are installed perpendicular to the rail profile and stocked on **one side** in the open position.

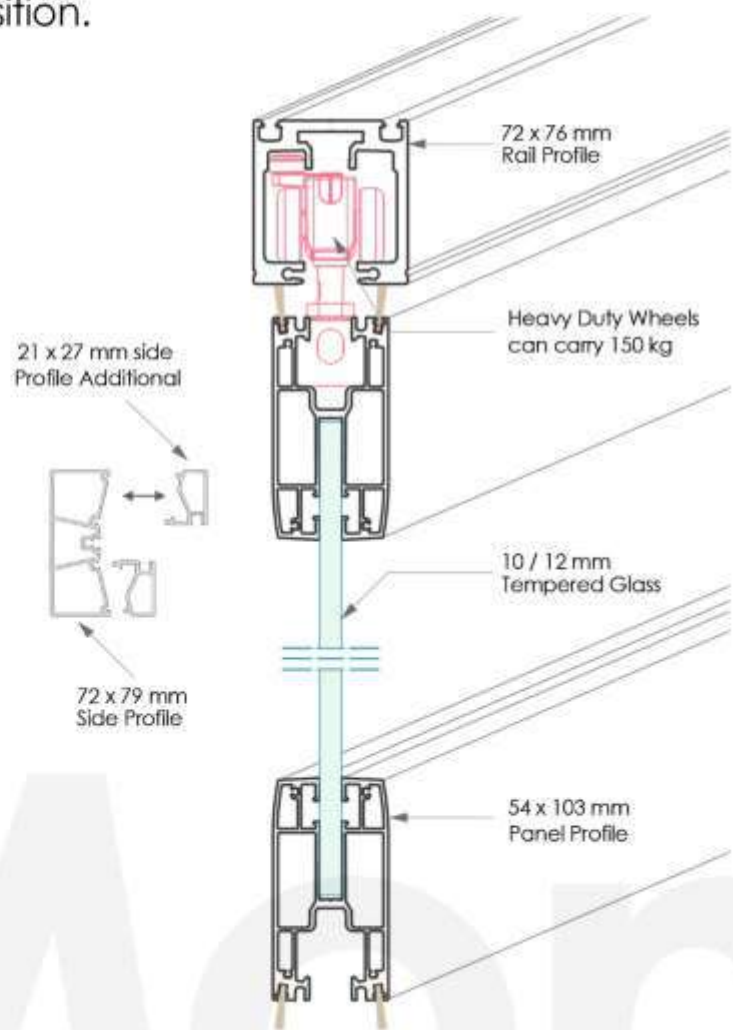
## SYSTEM COMPONENTS

- Rail profile
- Panel profile
- Side profile
- Hinged panel set
- Sliding panel set
- Half panel set
- Glass 10 MM

MAXIMUM WIDTH: 330 - 350 CM  
 MAXIMUM HEIGHT: 240 CM  
 MAXIMUM WIDTH PER PANEL: 75 CM

## Momentum HD

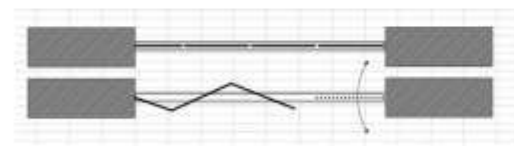
MAXIMUM WIDTH: 700 CM  
 MAXIMUM HEIGHT: 330 CM  
 MAXIMUM WIDTH PER PANEL: 80 CM



### OPTION 1

#### Without Door / Half Panel

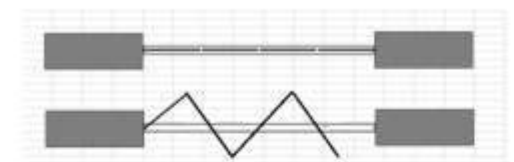
Special designed system can be used without door or half panel



### OPTION 2

#### Free Panel Packs (FPP)

Sliding Panels can be folded as a pack & moved freely to the right or left sides



### OPTION 3

#### Unlimited Opening

Maximum widths can be made with unlimited FPP integration





# Folding Glazing System

vertical frameless, save your limitless view

## HOW IT WORKS

Tiara system is a **horizontal Sliding Folding System**. The panels slide on the rails with the help of the top and bottom rollers. All the panels can be folded and stacked **right** or **left** side in **an open position**.

## Tiara 10 mm

### SYSTEM COMPONENTS

- Rail profile
- Panel profile
- Side profile
- Hinged panel set
- Sliding panel set
- Glass 10 MM

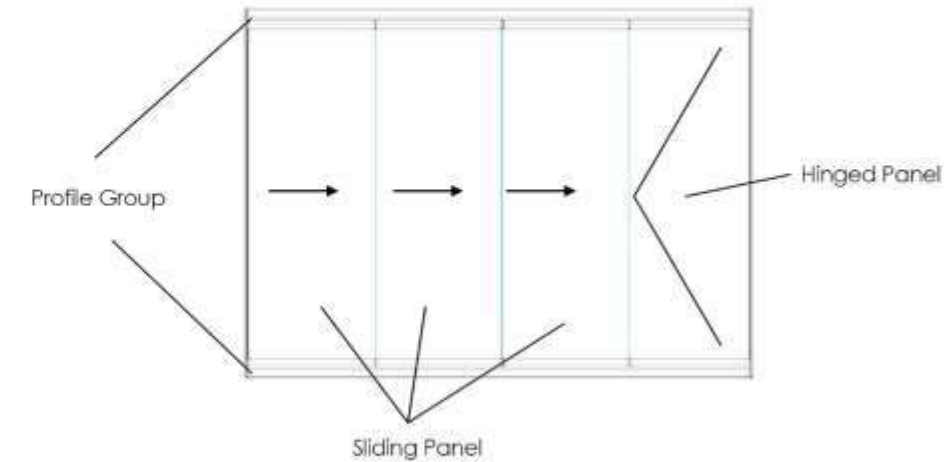
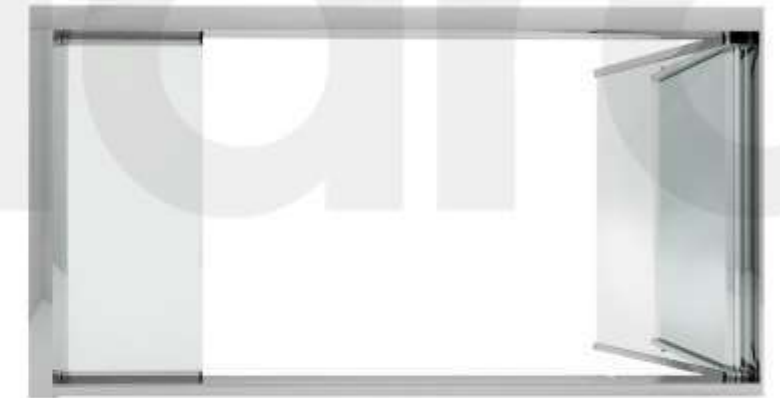
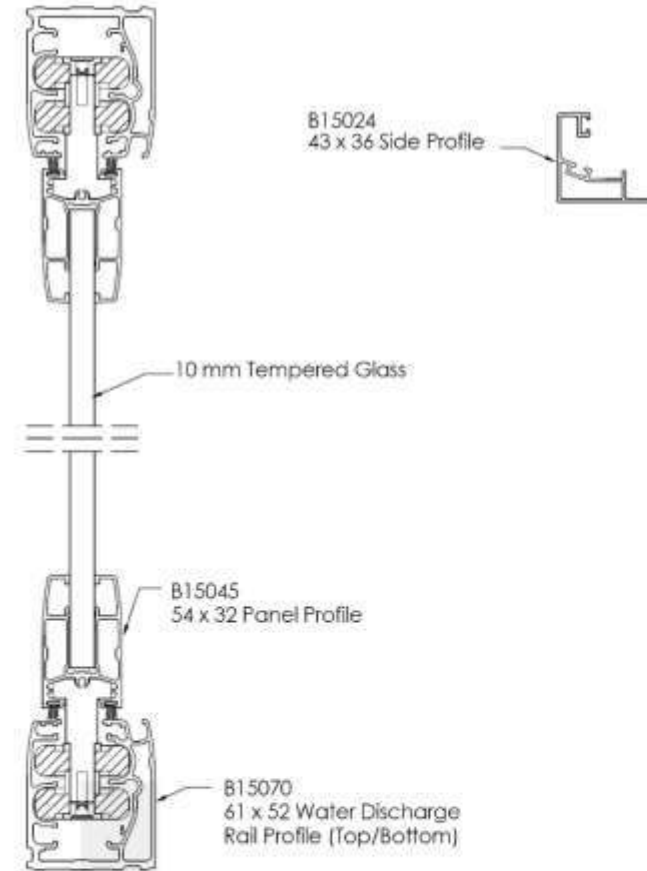
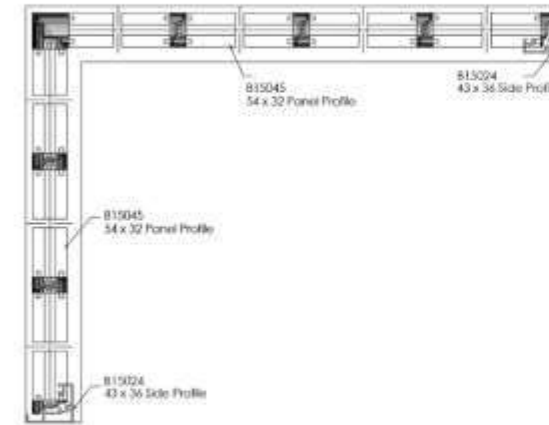
- MAXIMUM WIDTH: 750 CM
- MAXIMUM HEIGHT: 260 CM
- MAXIMUM WIDTH PER PANEL: 75 CM
- MATERIAL : stainless steel

## Statu 8 mm

### SYSTEM COMPONENTS

- Rail profile
- Panel profile
- Side profile
- Hinged panel set
- Sliding panel set
- Glass 8 MM

- MAXIMUM WIDTH: 650 CM
- MAXIMUM HEIGHT: 220 CM
- MAXIMUM WIDTH PER PANEL: 60 CM
- MATERIAL : Galvanized steel





# Vertiflex

## Vertiflex Automatic Glazing System

### HOW IT WORKS

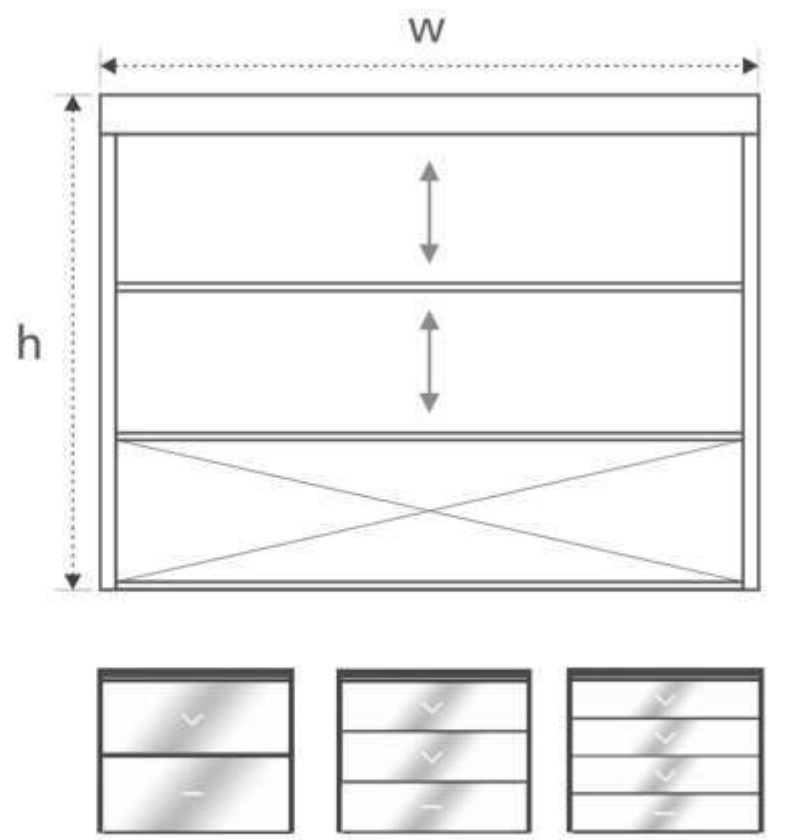
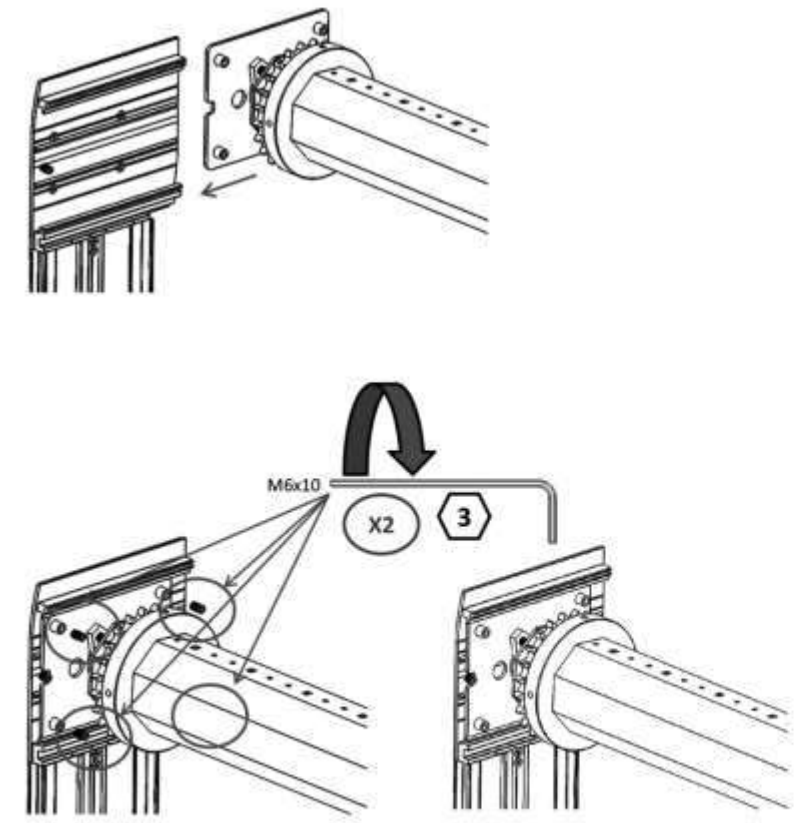
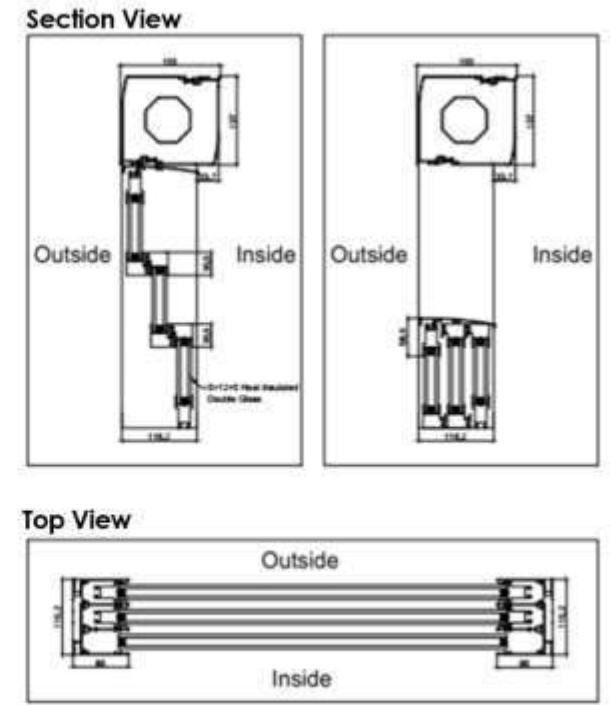
It is a **remote-controlled, motor-driven, connected, movable** handrail glazing system and supports interior ideas with unique solutions.

In the system, **3 different glass models** can be used as **5+12+5 Heat Insulated, 8 mm, or 10 mm** double tempered glass. Picking the type of glass is dependent on the required insulation level and the place where the system will be applied.

### SYSTEM COMPONENTS

- Rail profile
- Panel profile
- Side profile
- Standard Base
- Sliding panel set
- Motor and its accessories
- Single OR DOUBLE Glass
- Remote controller

MAXIMUM WIDTH: 400 CM  
 MAXIMUM HEIGHT: 400 CM  
 MAXIMUM WIDTH PER PANEL: 90 CM





# Glass Applications

Extraordinary material fits a diversity of needs.

“YOUR GLASS ADVISOR”









# Handrails and Stairs

“GOOD DESIGN IS OBVIOUS.  
GREAT DESIGN IS TRANSPARENT.”  
JOE SPARANO







# Transparent Handrails





# Handrails





# Printed Handrails





“ IN ORDER TO BE IRREPLACEABLE,  
ONE MUST ALWAYS BE DIFFERENT. ”  
COCO CHANEL



# Fabric Handrails





“DESIGN IS NOT JUST WHAT IT LOOKS LIKE AND FEELS LIKE. DESIGN IS HOW IT WORKS.”  
Steve Jobs



# Steel Handrails



# CNC Handrails







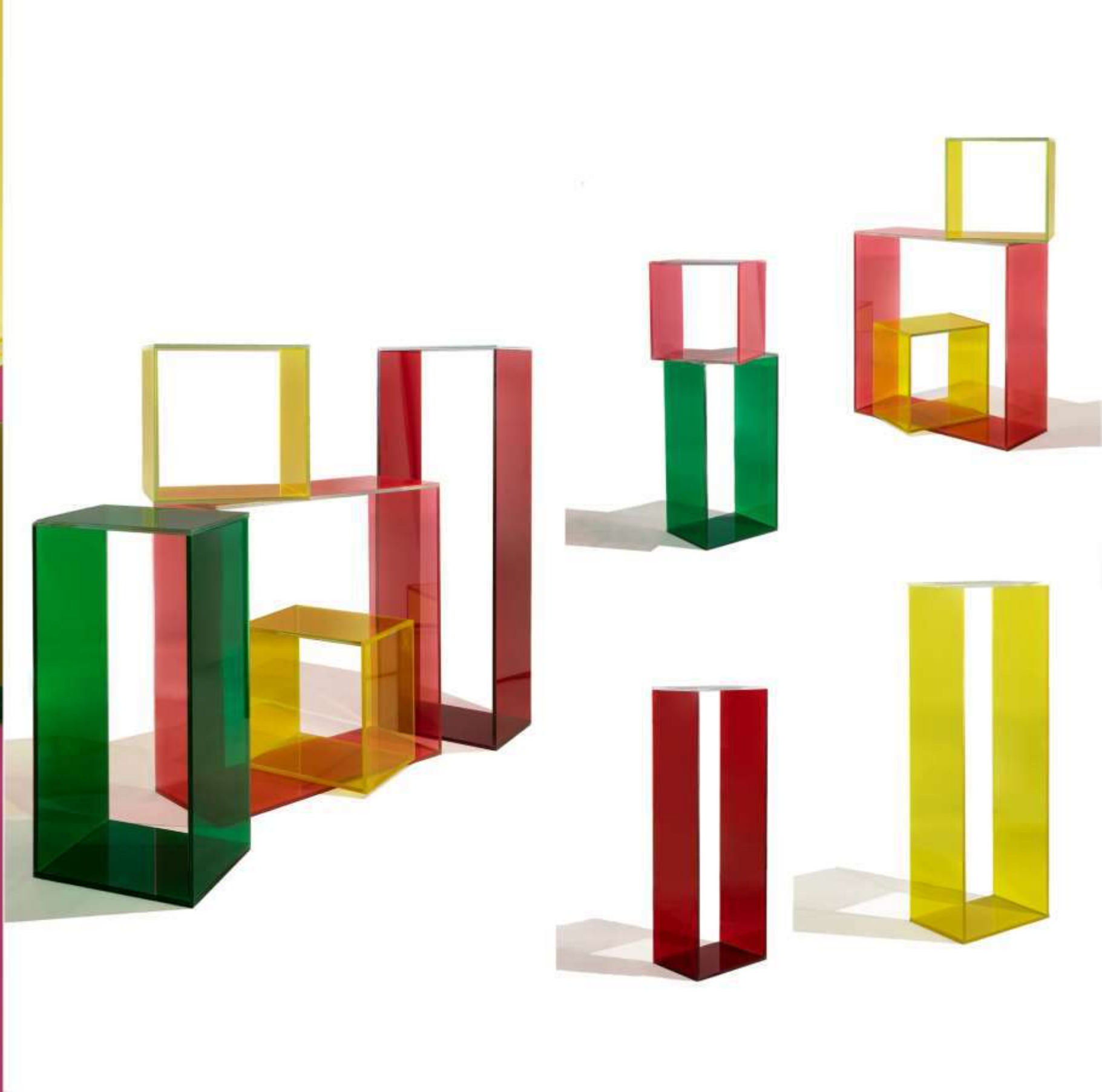
# Curved Handrails



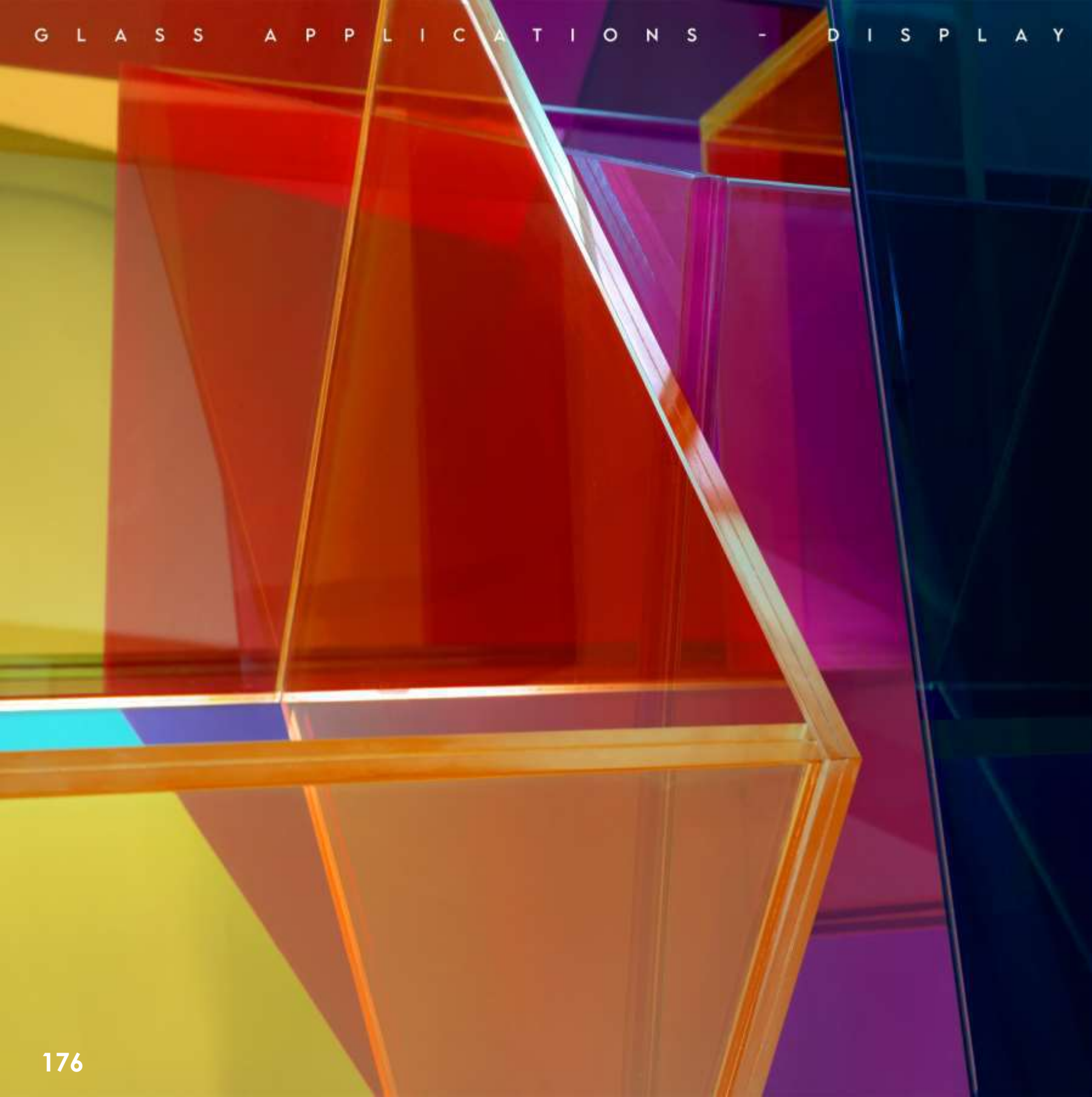




# Display Cases







“ YOU HAVE TO CREATE  
SOMETHING FROM NOTHING ”  
RALPH LAUREN







# Partitions





# Clear Partitions



“ MAKE IT SIMPLE, BUT SIGNIFICANT. ”  
Don Draper



# CNC Partation







# Cladding



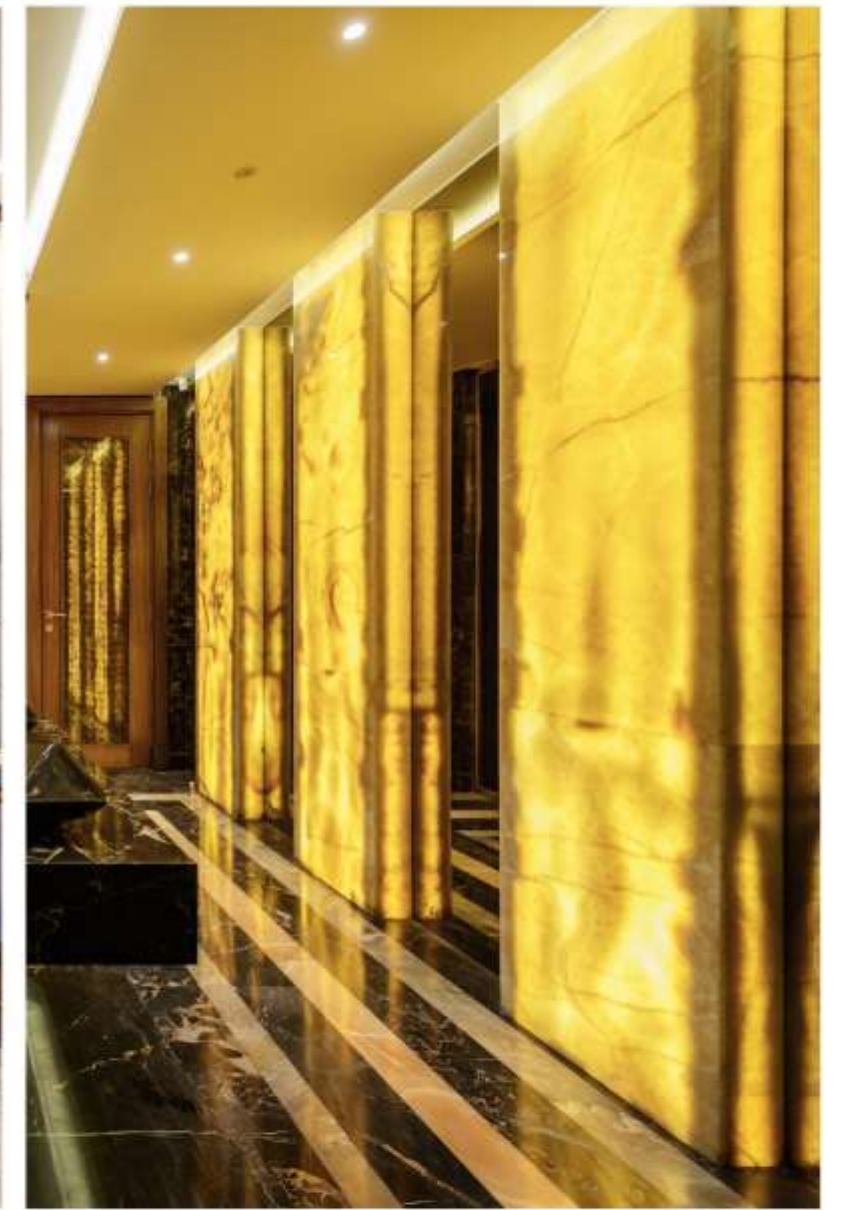








# Onyx Cladding



“ GOOD DESIGN SHOULD IMPROVE THINGS.  
DESIGN IS NEVER A SINGLE THING ”  
TOM DIXON





# Colored Cladding







# CNC Cladding



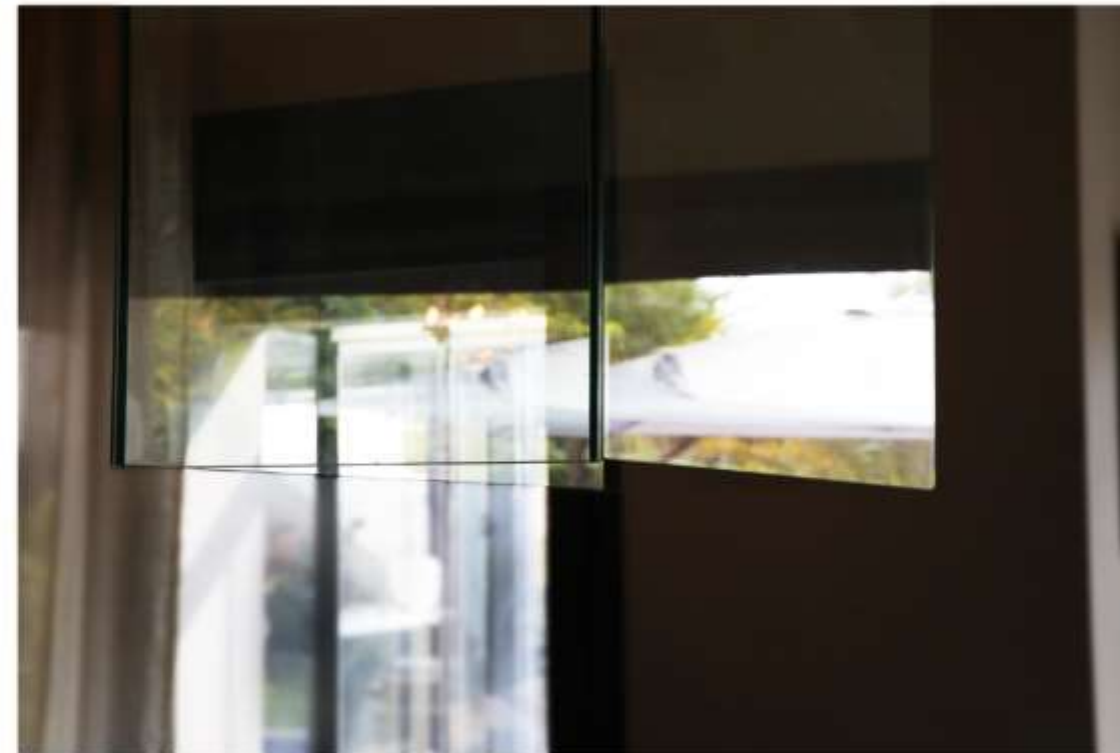




# Glass Marker Board



# Glass Hood





# Doors

WE PROVIDE THE LATEST GLASS ACCESSORIZE TRENDS AND COLLECTIONS IN VARIOUS COLORS AND SHAPES.







# Antique Mirrors



“ CHALLENGES ARE WHAT  
MAKE LIFE INTERESTING AND  
OVERCOMING THEM IS WHAT  
MAKES LIFE MEANINGFUL.  
Joshua J. Marine ”





“STYLES COME AND GO. GOOD DESIGN IS A LANGUAGE, NOT A STYLE”  
MASSIMO VIGNELLI





“ THERE IS A VOICE, AND THERE IS A  
DNA TO HOW I DESIGN ”  
KELLY WEARSTLER



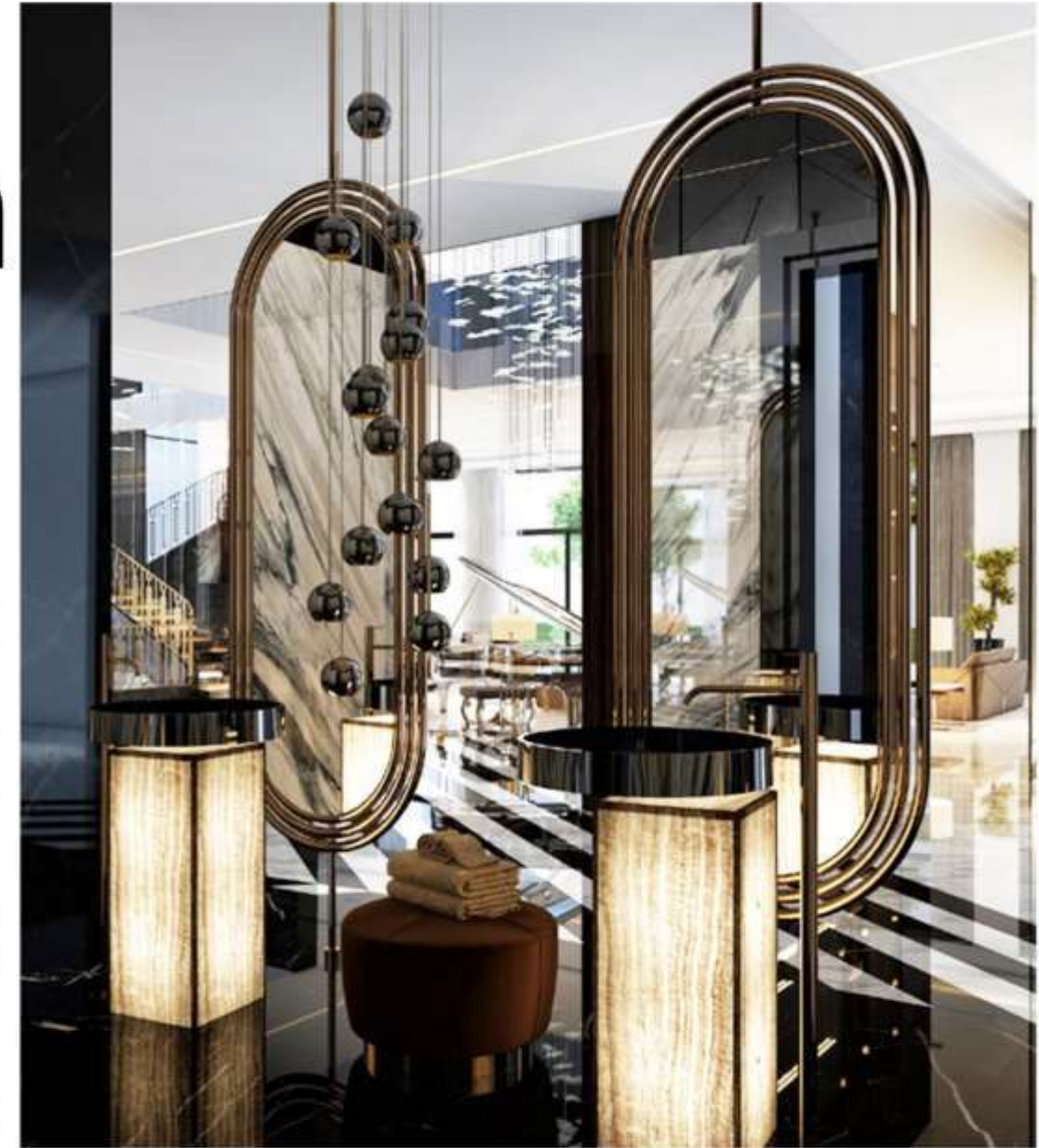
# Round mirrors







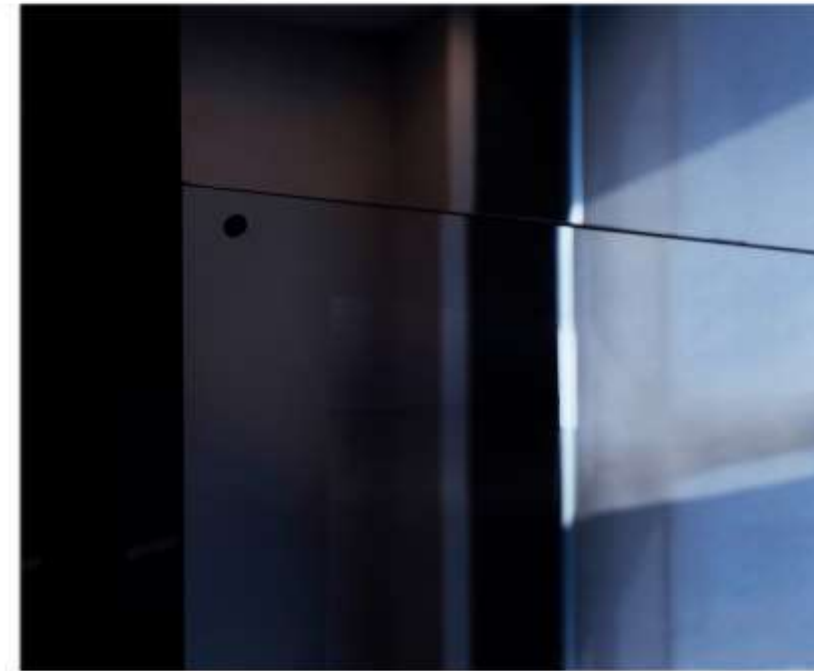
# Custom Frame Mirrors



“ A MIND THAT IS STRETCHED BY A  
NEW EXPERIENCE CAN NEVER GO  
BACK TO ITS OLD DIMENSIONS.  
Oliver Wendell Holmes ”



# Magic Mirrors



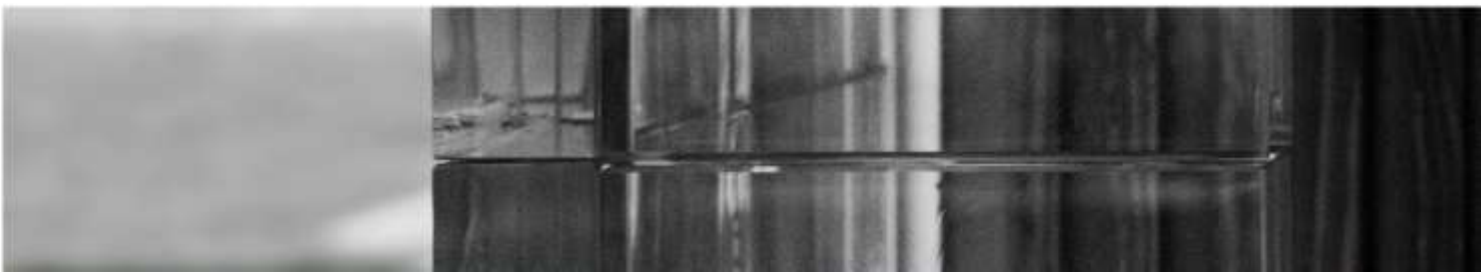
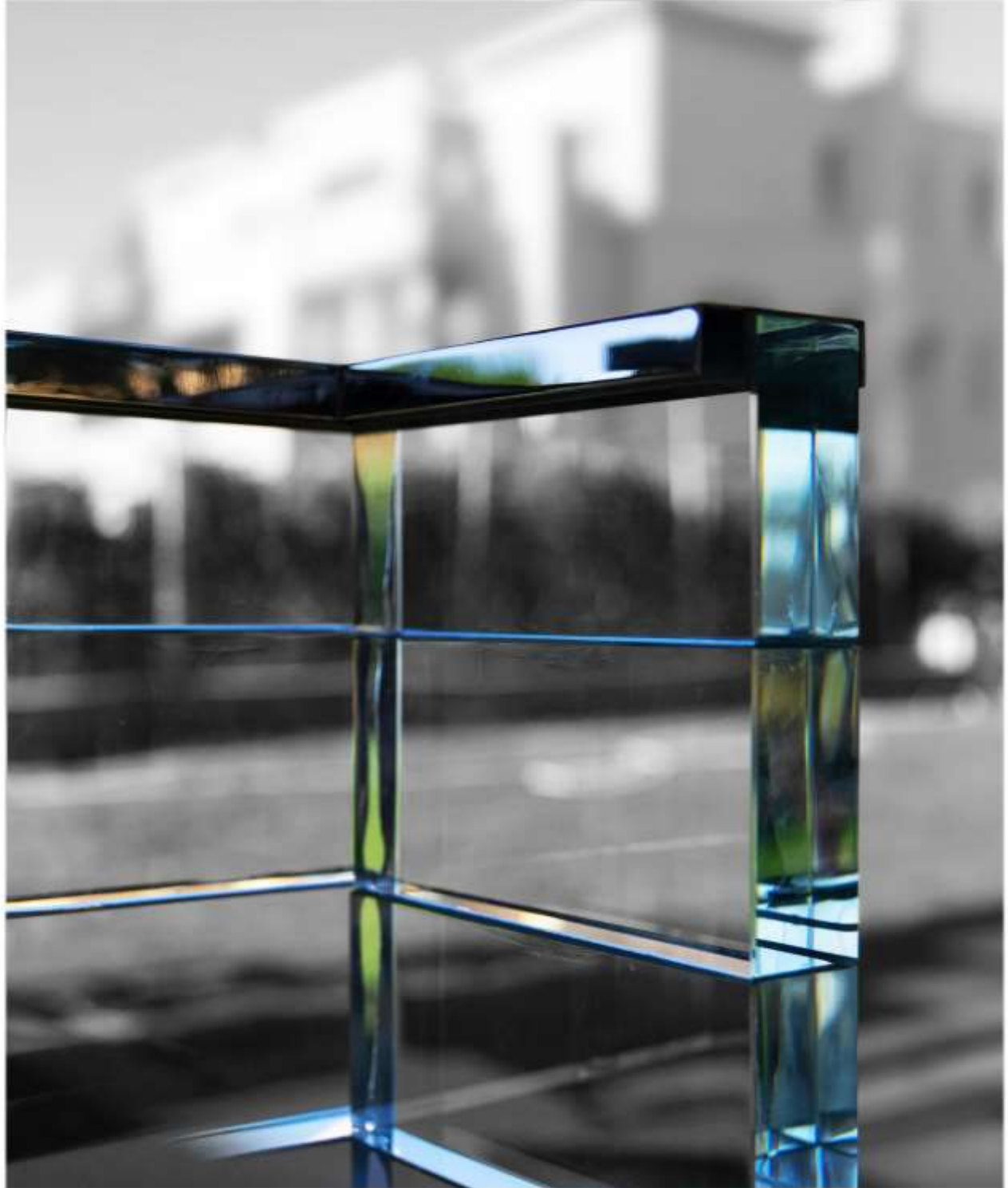
“DESIGN IS NOT JUST WHAT IT LOOKS LIKE AND FEELS LIKE. DESIGN IS HOW IT WORKS.”  
Steve Jobs



# Magic Mirrors











# Shower Cabinets







“ GOLD HAS BECOME A GO TO ACCENT FOR EACH AND EVERY ROOM OF THE HOME. ”











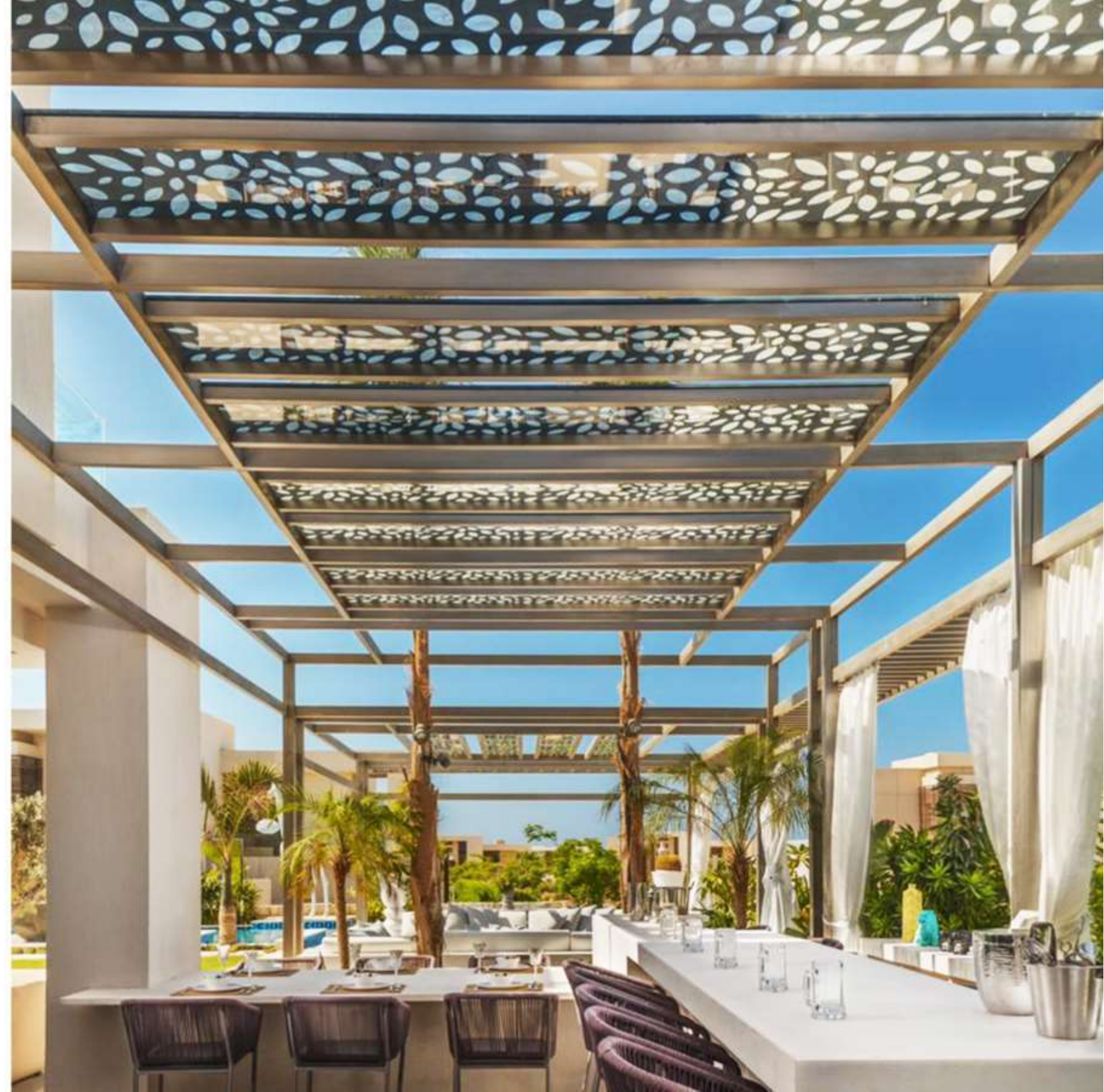
# Sky light



“ ALWAYS DESIGN A THING BY CONSIDERING IT IN ITS NEXT LARGER CONTEXT A SKYLIGHT IN A HOUSE, A HOUSE IN AN ENVIRONMENT, AN ENVIRONMENT IN A CITY PLAN ”



# Pergolas







# Explore Glass Applications

[www.decorativeglasse.com](http://www.decorativeglasse.com)





# Projects

Our **diverse portfolio** extends across **major sectors** from Hotels and Presidential Palaces to high-end residential villas and trendy retail shops, including Hospitality, Residential, Commercial, F&B, and Governmental projects.



# Explore residential projects

[www.decorativeglasseg.com](http://www.decorativeglasseg.com)



Project : Allegria Villa



“ WE SHAPE OUR HOMES AND THEN OUR HOMES SHAPE US ”  
WINSTON CHURCHILL





Project : Hacienda White

**Explore  
residential  
projects**  
[www.decorativeglasseg.com](http://www.decorativeglasseg.com)





Project : Allegria Villa



# Explore residential projects

[www.decorativeglasseg.com](http://www.decorativeglasseg.com)





Project : lakeview



D E C O R A T I V E G L A S S P R O J E C T S

**Explore  
residential  
projects**

[www.decorativeglasseg.com](http://www.decorativeglasseg.com)



# Explore commercial projects

[www.decorativeglasseg.com](http://www.decorativeglasseg.com)





# Explore commercial projects

[www.decorativeglasseg.com](http://www.decorativeglasseg.com)



Project : L'uliveto Cairo talian cuisine





Explore  
commercial  
projects  
[www.decorativeglasseg.com](http://www.decorativeglasseg.com)



Project : Breeze Restaurant



# Explore commercial projects

[www.decorativeglasseg.com](http://www.decorativeglasseg.com)





# Explore commercial projects

[www.decorativeglasseg.com](http://www.decorativeglasseg.com)





# Offices

CORPORATE DESIGN TRENDS NOWADAYS CALL FOR MORE MINIMALISM, SIMPLICITY, AND SOPHISTICATION.

Gives any space more **further structure**, which enhances organization without sacrificing that open environment. It **increases transparency** and **promotes interaction** among employees just as much as entirely open offices while also supplying a bit of much-needed **quiet space and privacy**.







Explore  
offices  
projects

[www.decorativeglasseg.com](http://www.decorativeglasseg.com)



Project : Sky AD Office







# Explore offices projects

[www.decorativeglasseg.com](http://www.decorativeglasseg.com)



Project : Sky AD Office





# Explore offices projects

[www.decorativeglasseg.com](http://www.decorativeglasseg.com)



Project : HSI Office



# Collections

We developed our **timeless collections** based on the respect of one of the **most ancient and extraordinary materials known to humanity**, which has kept the charm of its perfection unchanged over the ages.

“YOUR GLASS ADVISOR”





“ STYLES COME AND GO.  
GOOD DESIGN IS A LANGUAGE,  
NOT A STYLE. ”



“ IN ORDER TO BE IRREPLACEABLE,  
ONE MUST ALWAYS BE DIFFERENT. ”

# Chairs



Furniture  
and fits





Furniture  
and fits

“SIMPLICITY IS THE KEY”



EDGE-T 01

# Tables



# Furniture and



“BLUE IS THE ONLY COLOR WHICH MAINTAINS ITS OWN CHARACTER IN ALL ITS TONES!”



ROUND-T01







# Furniture and fits

“ FIND THE MOST BEAUTIFUL  
PIECE TO INSPIRE YOUR  
LUXURIOUS DECORATION! ”

DIAMOND - T 02







# Separators





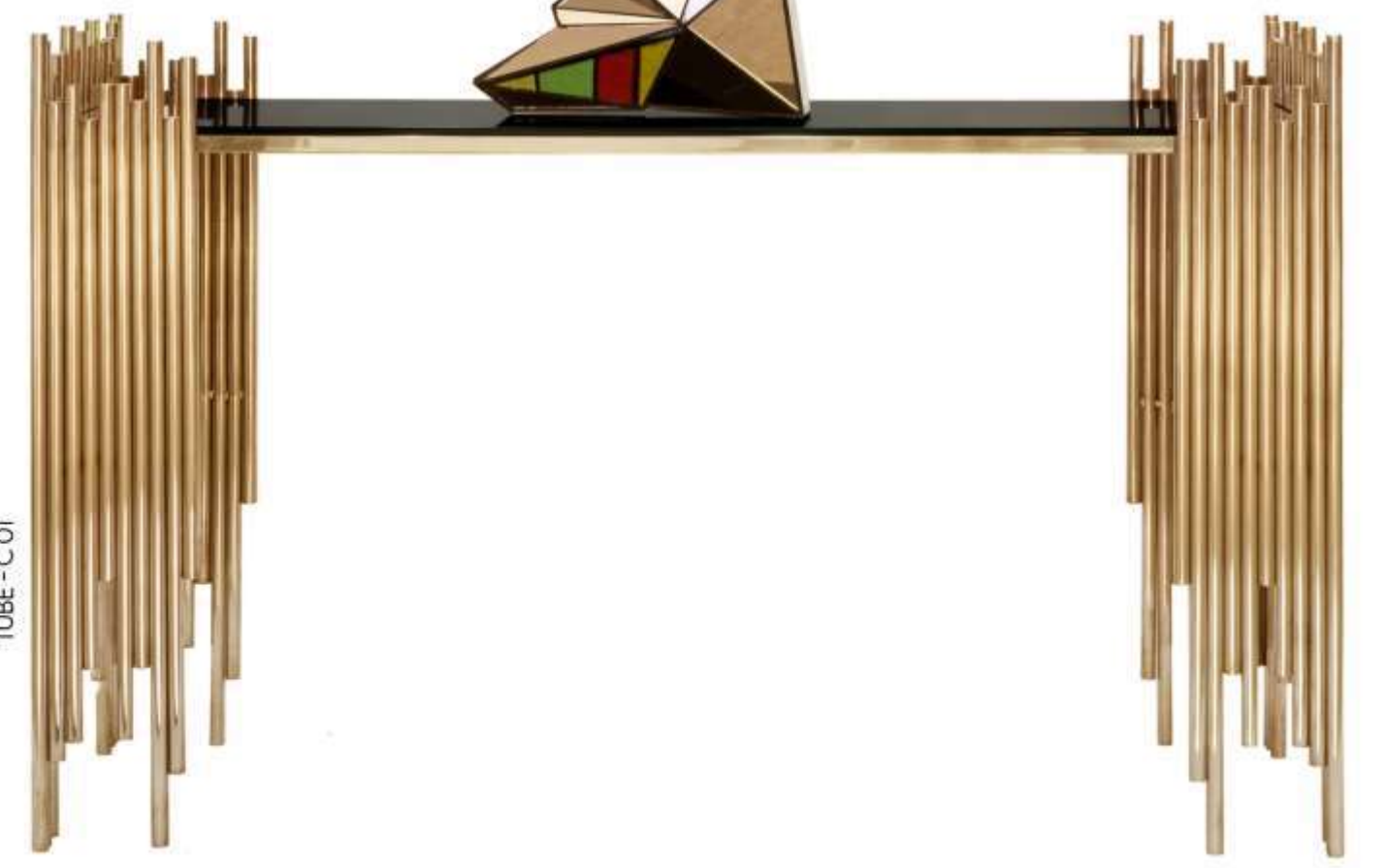
# Consoles



# Furniture and fits

“THERE IS LUXURY  
IN SIMPLICITY”

TUBE - C 01







# Furniture and fits

“DESIGN IS SO SIMPLE  
THATS WHY ITS SO  
COMPLICATED”

CROSS - C 02







Home  
Accessories  
Trays

# Trays



G TRAY - 01



Home  
Accessories



H O M E   A C C E S S O R I E S



G RAIL - 01

clothes rail





C O L L E C T I O N S

lighting  
Solutions



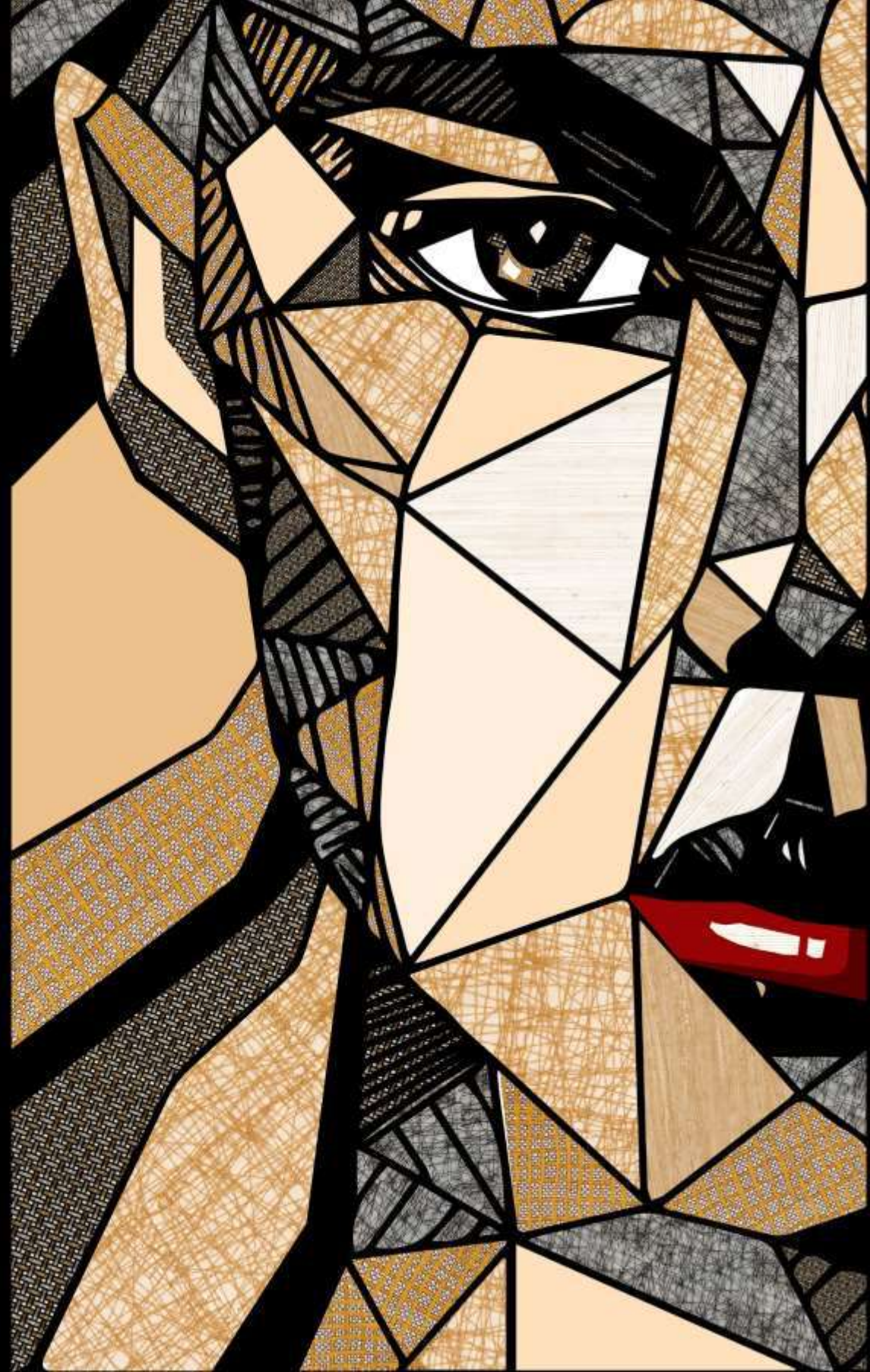
CODE: JYG-9007  
SIZE: 100 X 200 X 50 MM



PVD EYE 01  
COLOR : GOLD



LAMINATED FABRIC COLLAGE ART



D E C O R A T I V E G L A S S C O L L E C T I O N S







# Scale Art



SIZE : 149 X 114 CM

“ AUTHENTICITY IS THE CODE OF NOW ”





Scale  
Art



SIZE : 220 X 130 CM



# Scale Artworks



SIZE : 149 X 115 CM

“ SHE MIGHT HAVE MELTED A HEART OF STONE,  
BUT NOTHING CAN MELT A HEART OF WOOD. ”





# Antique

# Art Wo



ART WORK SIZE : 100 X 120 CM





**What  
others say  
about us!**

“YOUR GLASS ADVISOR”





“ Staying ahead of the game is even more challenging than reaching it, because it's all about maintaining quality and providing the best. Which is why Decorative Glass has been one of my main success partners, with our requiring values: Quality, integrity, and commitment. ”

*Harry Good*

**what  
others say  
about us!**



“ We were pleased to cooperate with Decorative Glass company. Our success is always linked to each other in the various projects that we did together. They have long experience and deep knowledge of their products and work. We always choose them as the first choice, because they always meet ours and clients' expectations. ”

**-MHDIH-**  
MONA HUSSEIN DESIGN HOUSE





“ Working with Decorative Glass is always an inspiration ! Tarek always completes what I want to reach in a very professional innovative way ..printed glass, antique mirrors , all my glossy dreams. ”



“ Twenty years of collaboration with decorative glass resulting in lots of successful projects and stories, rarely bahr is not only a supplier for me but he is one of the most ambitious, creative, smart and professional ones i have ever met. I am always in safe hands with him. ”







# LISEC-SOFTWARE FÜR DIE GANZE „FAMILIE“

*LISEC software for the whole "family"*

Decorative Glass, mit Sitz in Ägypten, feiert heute 60-jähriges Firmenjubiläum. Gemeinsam mit den Tochterwerken Arab Union Glass, wo über 1.500 Mitarbeiter im Dreischichtbetrieb Glas bearbeiten, ist man ägyptischer Marktführer.

Decorative Glass, based in Egypt, is celebrating its 60<sup>th</sup> anniversary this year. Together with its subsidiary Arab Union Glass, where more than 1,500 employees process glass in three shifts, it is the Egyptian market leader.



“ YOUR GLASS ADVISOR ”