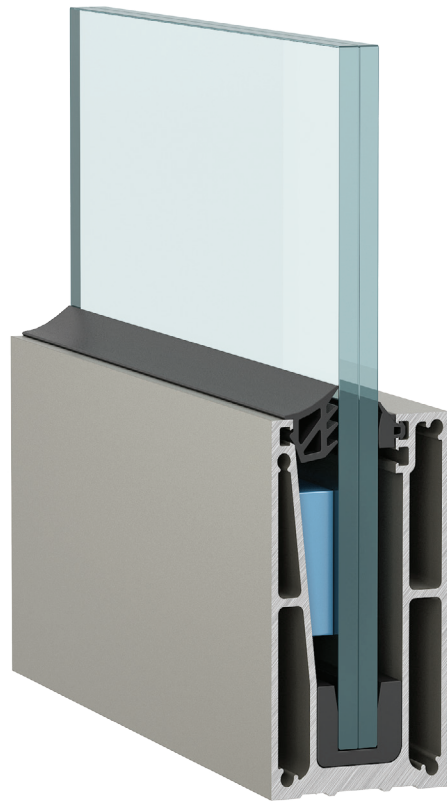


Slim•line

So slim, elegant
and durable.

Crystalline[®]
railing system



System identity

So slim, elegant and durable, with the best quality - to price relation, a glass railing could never be more attractive. Thanks to the excellent engineering, you save time and frustration with this premium performance, your projects become a statement. It comes in one-piece, 3 m and 6 m, base shoe with pre-drilled profile and drainage holes.

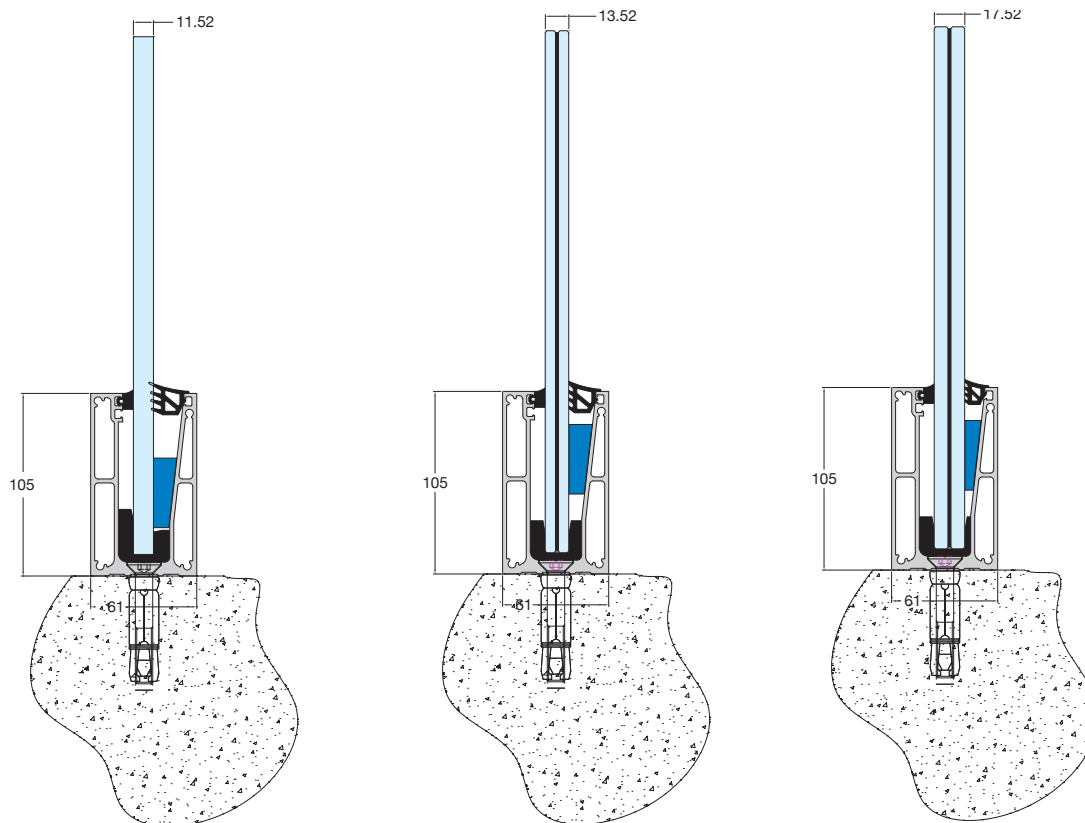
Designed for light to medium use is suited both for indoor and outdoor applications. Able to resist rail load up to 1 KN/m, it is appropriate for glass thickness between 11.52 mm and 17.52 mm, ideal for private residences, offices, shops and more.

Highlights

- Elegant slim design.
- High performance and durability.
- Cost-effective solution.
- Quick and easy installation.

Features

- Top mount installation (rail load up to 1 KN/m).
- One-piece 3 m and 6 m base shoe with pre-drilled profile.
- Specially hardened rubber seals support and protect the glass panel.
- Use of “wedge type” gasket to cover the inner gap.
- Compatible with tempered laminate glass and membrane types 5.5.4PVB, 6.6.4PVB and 8.8.4PVB.
- Max. construction height up to 1.20 m.
- Integrated drainage system.
- Cap rails and handrails available in various sizes and shapes.
- Wide selection of shades.
- Ideal for private residences, offices, shops and more.



F85-1B65

PROFILE DIMENSIONS

Face Height mm	105
Face Width mm	61

MATERIAL

EN AW-6063 -T6

DESIGNED FOR

Light to medium use (≤ 1 KN/m)
Indoor & Outdoor

MOUNTING

Top mount solution

DOMAIN OF APPLICATION

PRIVATE: Houses, Residences, Villas
COMMERCIAL: Offices, Shops, Retails

INFILL

Tempered Laminated Glass

GLASS THICKNESS

5.5.4PVB – 11.52 mm
6.6.4PVB – 13.52 mm
8.8.4PVB – 17.52 mm

TOP HANDRAIL

For 13.52 mm glass
For 17.52 mm glass

LAB / PERFORMANCES

IFT ROSENHEIM GERMANY / Slim Line 88.4PVB Fulfilled load of 1.84 KN (performance under safety load)
IFT ROSENHEIM GERMANY / Slim Line 66.4PVB Fulfilled load of 1.84 KN (performance under safety load)